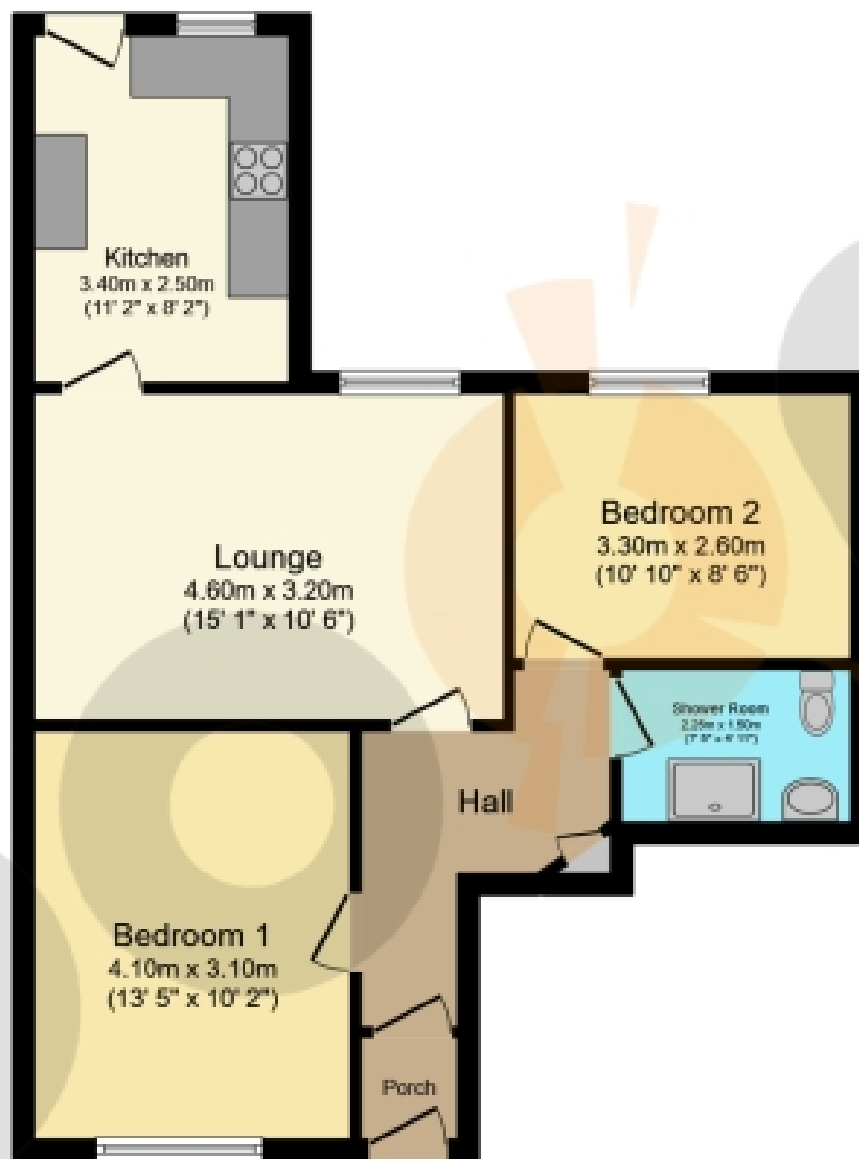




**Eglinton Street, Beith**

**Offers Over £65,000**





Floor Plan

Total floor area: 56.0 sq.m. (602 sq.ft.)

This floor plan is for illustrative purposes only. It is not drawn to scale. Any measurements, floor areas (including any total floor area), openings and orientations are approximate. No details are guaranteed, they cannot be relied upon for any purpose and do not form any part of any agreement. No liability is taken for any error, omission or misstatement. A party must rely upon its own inspection(s). Powered by [www.Propertybox.io](http://www.Propertybox.io)

## THE PROPERTY

Situated on Eglinton Road in Beith, this charming ground floor apartment has a host of amenities, eateries and public transport links on your doorstep. With own door entrance, you're welcomed into a hallway, which leads through to the generously proportioned lounge, offering ample space for a range of furniture and décor arrangements.

Off the lounge is the recently installed kitchen, fitted with sleek high-gloss white wall and base units paired with dark oak-effect worktops, creating a stylish yet practical workspace. The kitchen also benefits from brand new electric hob and oven alongside a washing machine and space for further freestanding appliances where desired.

Within the apartment are two well-proportioned bedrooms, both comfortably accommodating a double bed. Completing the home internally is a brand new, modern shower room featuring a W.C., wash hand basin, and walk-in shower cubicle.

To the rear of the property is a communal garden, providing outdoor space for residents to enjoy.

Park and ride facilities at Glengarnock train station are less than a five-minute drive and a regular bus service will have you in Glasgow City Centre in under 35 minutes. The West Coast with beautiful sandy beaches is only 20 minutes' drive or a short train journey away. The picturesque town of Beith is a delightful place with local cafes and an eclectic range of shops.

\*Please note some AI technology has been used to enhance this listing\*

We would highly recommend an early viewing as we have no doubt this property will be very popular. Viewing by appointment - please contact The Property Boom to arrange a viewing or for any further information and a copy of the Home Report.

Any areas, measurements or distances quoted are approximate and floor plans are only for illustration purposes and are not to scale.

THESE PARTICULARS ARE ISSUED IN GOOD FAITH BUT DO NOT CONSTITUTE REPRESENTATIONS OF FACT OR FORM PART OF ANY OFFER OR CONTRACT.

[www.thepropertyboom.com](http://www.thepropertyboom.com)  
Head Office : 31 Braehead, Beith, KA15 1EG  
Tel: 0333 900 9089 / Email: [smile@thepropertyboom.com](mailto:smile@thepropertyboom.com)