



Hill View Crescent Road, Ramsey, IM8 2JR  
Asking Price £359,950

- Beautiful Family Home in Ramsey
  - Separate Utility Area
  - Newly Fitted Boiler
- 3 Bedrooms and 1 Bathroom
  - Beautiful Views
- Large Back Garden
  - Semi Detached



Welcome to Hill View, a charming three-bedroom semi-detached home set in a sought-after location on Crescent Road in the heart of Ramsey. Perfectly positioned for families and professionals alike, this delightful property combines comfortable living space with an enviable setting.

The home offers well-proportioned accommodation throughout, featuring a bright and welcoming living area, a spacious kitchen with a separate utility space, ideal for everyday family life, and three generous bedrooms providing flexibility for growing families, guests, or a home office.

In addition, the property benefits from a versatile loft space, ideal for use as a hobbies room, creative studio, or dedicated office area, perfect for those working from home or seeking extra room away from the main living areas.

To the rear, the property truly comes into its own. The private back garden enjoys lovely open views towards the iconic Albert Tower, creating a picturesque backdrop and a wonderful space for relaxing, entertaining, or simply enjoying the surroundings.

Situated in a great location close to local amenities, schools, and transport links, Hill View presents an excellent opportunity to acquire a lovely family home in one of Ramsey's most desirable residential areas.

Early viewing is highly recommended to fully appreciate all that this appealing property has to offer.











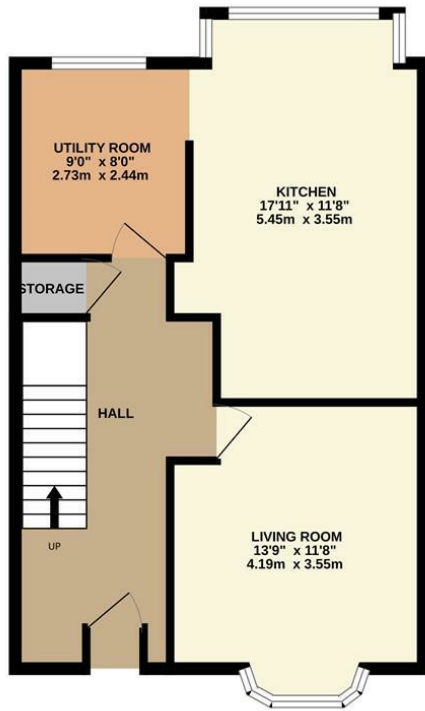


Hill View Crescent Road, Ramsey, IM8 2JR

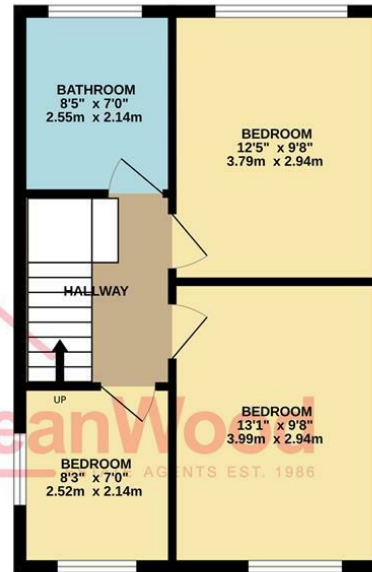
---



GROUND FLOOR  
551 sq.ft. (51.2 sq.m.) approx.



1ST FLOOR  
425 sq.ft. (39.5 sq.m.) approx.



2ND FLOOR  
130 sq.ft. (12.0 sq.m.) approx.



TOTAL FLOOR AREA : 1105 sq.ft. (102.7 sq.m.) approx.  
Not to scale-for identification purposes only  
Made with Metropix ©2026

**DOUGLAS**

37 VICTORIA STREET  
DOUGLAS  
ISLE OF MAN IM1 2LF

T 01624 620606  
F 01624 677363  
E info@deanwood.co.im

**CASTLETOWN**

COMPTON HOUSE  
9 CASTLE STREET CASTLETOWN  
ISLE OF MAN IM9 1LF

T 01624 825995  
F 01624 825996  
E castletown@deanwood.co.im

**RAMSEY**

LEZAYRE HOUSE  
87 PARLIAMENT STREET  
RAMSEY ISLE OF MAN IM8 1AQ

T 01624 816111  
F 01624 816588  
E ramsey@deanwood.co.im

These particulars are for information purposes only. They do not constitute or form any contract nor should any statement contained herein be relied upon as a representation of fact. Neither the vendor nor DeanWood Agencies Limited ('the firm'), nor any officer or employee of the firm accept liability or responsibility for any statement contained herein. The vendor does not by these particulars, nor does the firm, nor does any officer or any employee of the firm have any authority to make or give any representation or warranty whatsoever as regards the property or otherwise. It is the sole responsibility of any person interested in the property described in these particulars to make all proper enquiries and searches to verify the description of the property and all other particulars herein.

FOR MORE PROPERTIES VISIT OUR WEBSITE @ [deanwood.im](http://deanwood.im)