



Stoney Fields, Watton At Stone, Hertford, SG14 3QD



Welcome to Stoney Fields, Watton At Stone, Hertford

A modern three / four-bedroom terraced town house, built in 2012, ideally located within the popular village of Watton at Stone and well suited to families. Ideally positioned within close proximity to highly rated primary schools, along with village amenities and excellent transport links. The property offers well-proportioned and versatile accommodation arranged over multiple floors, providing flexibility for a range of lifestyles, including home working or multi-generational living. Built in 2012, the home benefits from a contemporary design and modern build standards, set within a well-established residential setting. One of the home's standout features is the off-road parking for two vehicles to the front of the property, a notable advantage and a rarity for homes of this type in the area. The adaptable layout allows for three or four bedrooms, making it particularly appealing for growing families. This attractive town house combines practical modern living with the charm of a sought-after Hertfordshire village.



-Accommodation Overview-

Entrance Hall

Downstairs Cloakroom

Open Plan Kitchen / Diner

29' x 12' 10" (8.84m x 3.91m)

Study

7' 6" max x 6' 1" max (2.29m max x 1.85m max)

-First Floor Landing-

Bedroom One

12' 10" x 10' (3.91m x 3.05m)

En-Suite Shower Room

Lounge / Bedroom Four

12' 11" max x 12' max (3.94m max x 3.66m max)

-Second Floor –

Bedroom Three

13' x 7' 6" (3.96m x 2.29m)

Bedroom Two

13' max x 11' 4" max (3.96m max x 3.45m max)

Bathroom

-Exterior-

Rear Garden

Side access is shared.

Driveway

Agent Note:

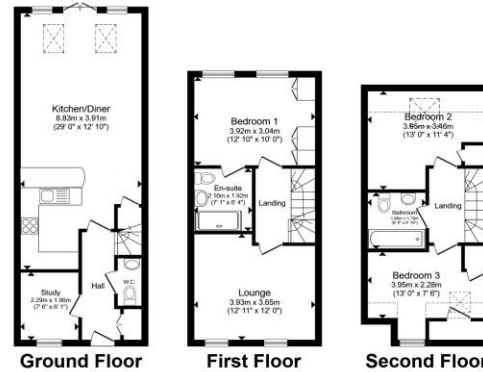
Please note there is a management charge of £300 yearly. Please ask agent for more details.



view this property online williamhbrown.co.uk/Property/HFD108265

Welcome to Stoney Fields, Watton At Stone Hertford

- Three / Four Bedroom Town House
- Situated In A Quiet Cul-De-Sac Location
- Short Walk To Watton-At-Stone Train Station
- Lounge / Bedroom Four
- Off Street Parking For Two Cars To Front
- Low Maintenance Rear Garden
- En-Suite Shower Room To Bedroom One & Further Family Bathroom On Second Floor



Total floor area 113.5 m² (1,222 sq.ft.) approx
 This floor plan is for illustrative purposes only. It is not drawn to scale. Any measurements, floor areas (including any total floor area), openings and orientation are approximate. No details are guaranteed, they cannot be relied upon for any purpose and they do not form part of any agreement. No liability is taken for any error, omission or misstatement. A party must rely upon its own inspection(s). Powered by www.propertybox.co



Tenure: Freehold
 EPC Rating: C
 Council Tax Band: E

Offers in excess of
£475,000



Please note the marker reflects the postcode not the actual property

view this property online williamhbrown.co.uk/Property/HFD108265



Property Ref:
 HFD108265 - 0001

1. MONEY LAUNDERING REGULATIONS Intending purchasers will be asked to produce identification documentation at a later stage and we would ask for your co-operation in order that there is no delay in agreeing the sale. 2. These particulars do not constitute part or all of an offer or contract. 3. The measurements indicated are supplied for guidance only and as such must be considered incorrect. Potential buyers are advised to recheck measurements before committing to any expense. 4. We have not tested any apparatus, equipment, fixtures or services and it is in the buyers interest to check the working condition of any appliances. 5. Where an EPC, or a Home Report (Scotland only) is held for this property, it is available for inspection at the branch by appointment. If you require a printed version of a Home Report, you will need to pay a reasonable production charge reflecting printing and other costs. 6. We are not able to offer an opinion either written or verbal on the content of these reports and this must be obtained from your legal representative. 7. Whilst we take care in preparing these reports, a buyer should ensure that his/her legal representative confirms as soon as possible all matters relating to title including the extent and boundaries of the property and other important matters before exchange of contracts.



william h brown



01992 586501



Hertford@williamhbrown.co.uk



21 Castle Street, HERTFORD, Hertfordshire, SG14 1ER



williamhbrown.co.uk