



COUNTRY
HOLMES

Salisbury Street, Hadfield, Glossop, Derbyshire, SK13 1NP

£265,000

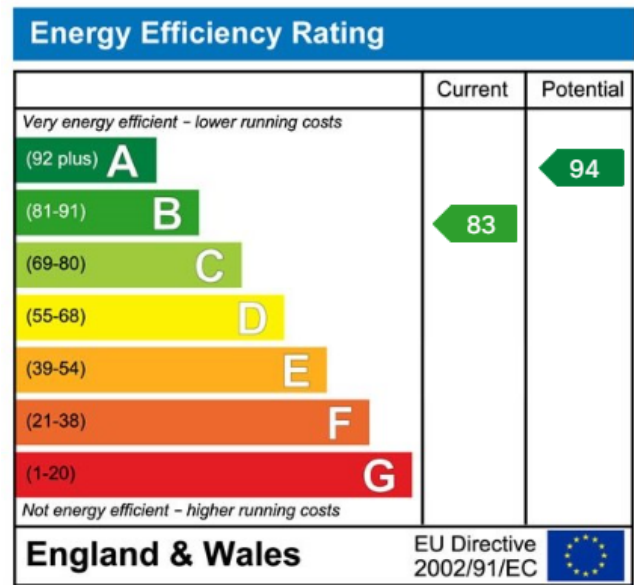
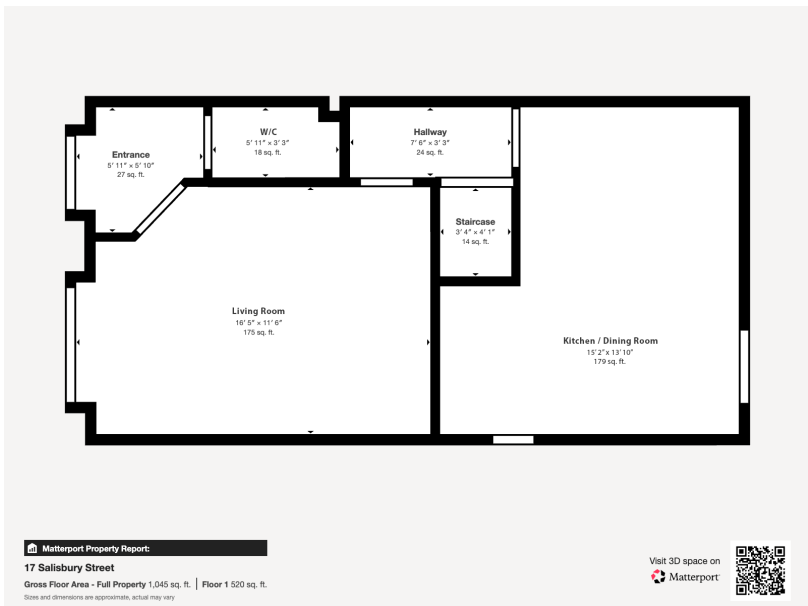
🛏️ 3 🚿 2 🚗 1



- Modern three-bedroom, two-bathroom semi-detached home
- Spacious living room and large dining kitchen with garden access
- Generous rear garden with decking, artificial lawn, and storage shed
- Offered with no onward chain
- Prime location just a short walk from Hadfield village centre
- Master bedroom with en suite shower room
- Two allocated parking spaces to the rear
- Excellent transport links, including direct rail to Manchester City Centre



Country Holmes proudly present this modern three-bedroom, two-bathroom semi-detached home, ideally located close to Hadfield village centre. The property features a spacious living area, large dining kitchen with garden access, en suite master bedroom, and a generous low-maintenance rear garden with decking and artificial lawn. With two allocated parking spaces and no onward chain, this beautifully presented home offers convenient, contemporary living near local amenities, scenic trails, and direct transport links to Manchester.



01457 761310 | glossop@countryholmes.co.uk | www.countryholmes.co.uk
 18 High Street West, Glossop, Derbyshire, SK13 8BH