

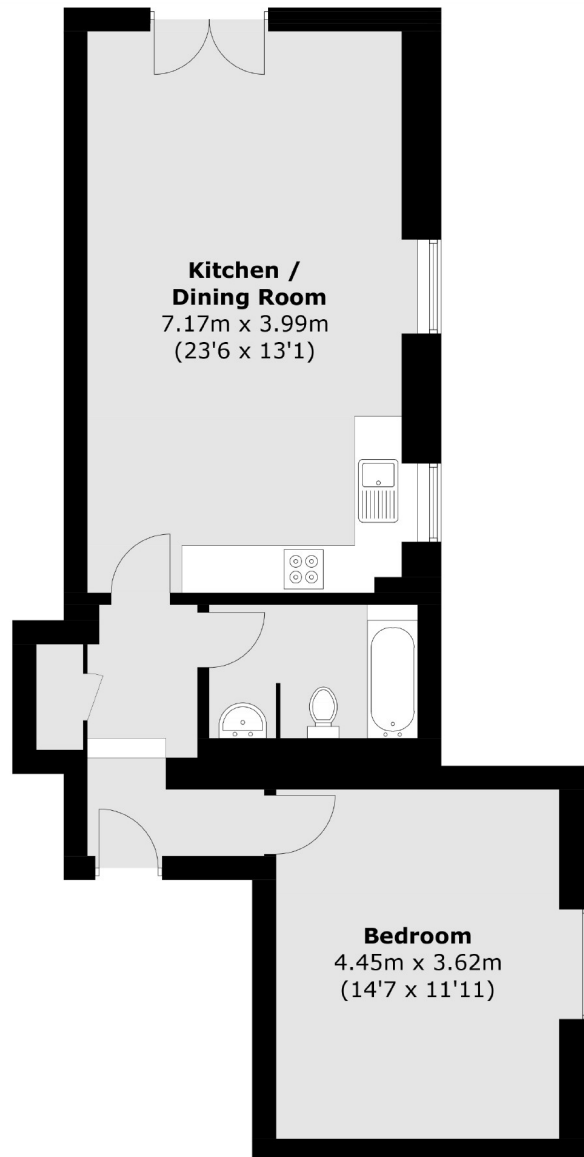


Castlebar Park, W5

£450 pw (£1,950 pcm)

This spacious ground floor double bedroom apartment features plenty of storage, large living room and modern bathroom. The property comes with an allocated parking and a landscaped garden.

Castlebar Park is a quiet, residential street in Ealing, ideally located close to Ealing Broadway's excellent transport links, shops and local amenities.



Total area (approx.): 59.3 sq. m (638.3 sq. ft)

Robertson Smith & Kempson Ealing Lettings
1 The Broadway,
London, W5 2NT
020 8840 7885
ealinglettings@robertsonsmithandkempson.co.uk

Energy Rating: C. We aim to make our particulars both accurate and reliable. However they are not guaranteed; nor do they form part of an offer or contract. If you require clarification on any points then please contact us, especially if you're traveling some distance to view. Please note that appliances and heating systems have not been tested and therefore no warranties can be given as to their good working order.