



Keats Avenue
SUTTON-IN-ASHFIELD

burchell
edwards

Keats Avenue SUTTON-IN-ASHFIELD NG17 2GH

for sale offers over
£300,000



Property Description

Welcome to this beautifully presented detached bungalow on Keats Avenue, Sutton-in-Ashfield, offered for sale with no onward chain. Enjoying an elevated position with exceptional views of Brierley, this two-bedroom home is thoughtfully designed and finished to a high standard throughout, featuring oak doors and Hillary's blinds.

The spacious living accommodation includes a bright living room, a modern kitchen/diner with garden-facing French doors, and a practical utility room. Both bedrooms are well proportioned, with fitted storage in each, and the contemporary shower room adds to the home's appeal.

Externally, the property boasts extensive outdoor space, including a generous lawn, landscaped gravelled areas and a charming summerhouse. A large double garage with electric door and an additional office with its own consumer unit offer excellent versatility for home working or hobbies. The expansive driveway provides ample off-street parking, while the elevated corner plot ensures privacy and attractive open views.

This well-maintained bungalow is an ideal opportunity for those seeking comfortable single-level living in a desirable location.

Entrance Hall

A welcoming entrance hall featuring a UPVC front door and composite rear door leading to the garden. The space benefits from laminate flooring, a wall-mounted radiator, and an airing cupboard, with doors to the living room, bedroom two, shower room, kitchen/diner and utility room. Loft access is also provided.

Living Room

A bright and comfortable living space with laminate flooring, a wall-mounted radiator, a double-glazed front window, and a modern electric wall-mounted fire, creating a cosy focal point.

Utility Room

A practical utility room offering carpet flooring, plumbing for a washing machine, storage, electrics, and housing the boiler.

Kitchen / Diner

A spacious kitchen/diner fitted with matching wall and base units, an inset composite sink and drainer, integrated dishwasher, tiled splashbacks, spotlights and an integral electric oven and hob with cooker hood. The room is finished with laminate flooring, two radiators, double-glazed windows to the front and side, and French doors opening onto the garden.

Shower Room

A modern shower room complete with tiled flooring, a walk-in shower, ceramic toilet and wash basin set in a vanity unit, towel radiator, full Aqua-board wall finish, and an opaque double-glazed window.

Bedroom One

A generous double bedroom with carpeted flooring, fitted wardrobes, a wall-mounted radiator, and double-glazed windows to the front and side elevations.

Bedroom Two

A comfortable second bedroom featuring carpeted floors, a wall-mounted radiator, a double-glazed rear window, and two sets of wardrobes included in the sale.

Outbuildings

A charming wooden summerhouse with a stained-glass feature window to the front. Furniture within may be available by negotiation.

Garage

A spacious double garage with an electric up-and-over door, electrics, and useful storage space.

Office

Located at the rear of the garage, this versatile office space includes its own consumer unit, electrics, side-facing double-glazed windows, and garden access via an external door.

Externals

This attractive bungalow sits on an elevated corner plot and boasts well-maintained, versatile outdoor spaces.

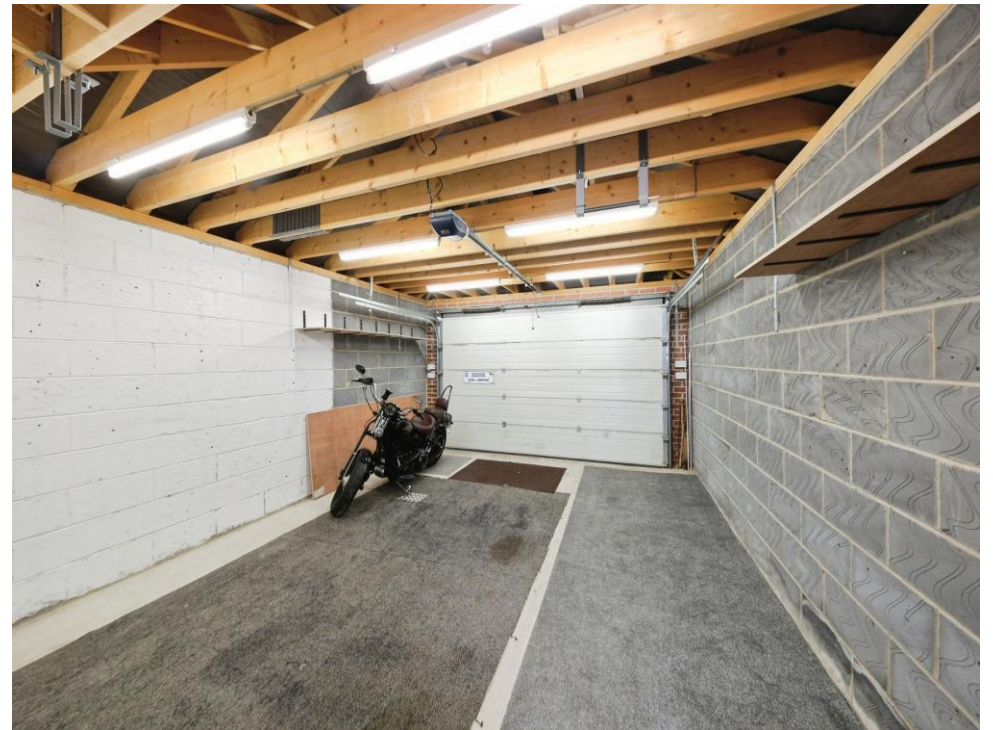
The rear garden offers a generous lawn bordered by mature shrubs and a private gravelled seating area, perfect for relaxing or entertaining.

A separate landscaped section features decorative gravel, raised beds and space for outdoor furniture.

The front provides a large driveway and double garage, with neat fencing ensuring privacy and a secure, enclosed feel.

A tidy courtyard frontage adds character and strong kerb appeal.

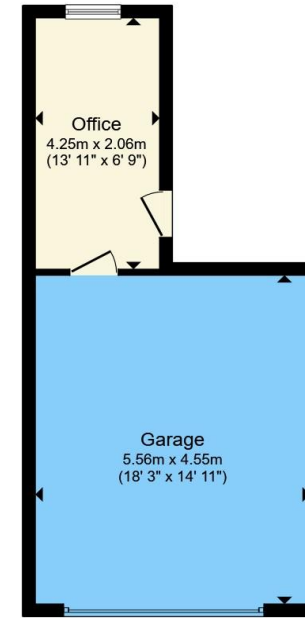








Floor Plan



Outbuilding

Total floor area 124.4 m² (1,339 sq.ft.) approx

This floor plan is for illustrative purposes only. It is not drawn to scale. Any measurements, floor areas (including any total floor area), openings and orientation are approximate. No details are guaranteed, they cannot be relied upon for any purpose and they do not form part of any agreement. No liability is taken for any error, omission or misstatement. A party must rely upon its own inspection(s). Powered by www.propertybox.io



To view this property please contact Burchell Edwards on

T 01623 627727
E Mansfield@burchelledwards.co.uk

12 Albert Street
 MANSFIELD NG18 1EB

EPC Rating: D Council Tax
 Band: C

Tenure: Freehold

check out more properties at burchelledwards.co.uk



1. MONEY LAUNDERING REGULATIONS Intending purchasers will be asked to produce identification documentation at a later stage and we would ask for your co-operation in order that there will be no delay in agreeing the sale. 2. These particulars do not constitute part or all of an offer or contract. 3. The measurements indicated are supplied for guidance only and as such must be considered incorrect. Potential buyers are advised to recheck measurements before committing to any expense. 4. We have not tested any apparatus, equipment, fixtures, fittings or services and it is in the buyers interest to check the working condition of any appliances.

Burchell Edwards is a trading name of Connells Residential which is registered in England and Wales under company number 1489613, Registered Office is Cumbria House, 16-20 Hockliffe Street, Leighton Buzzard, Bedfordshire, LU7 1GN. VAT Registration Number is 500 2481 05.

See all our properties at www.burchelledwards.co.uk | www.rightmove.co.uk | www.zoopla.co.uk

Property Ref: MFD209686 - 0002