

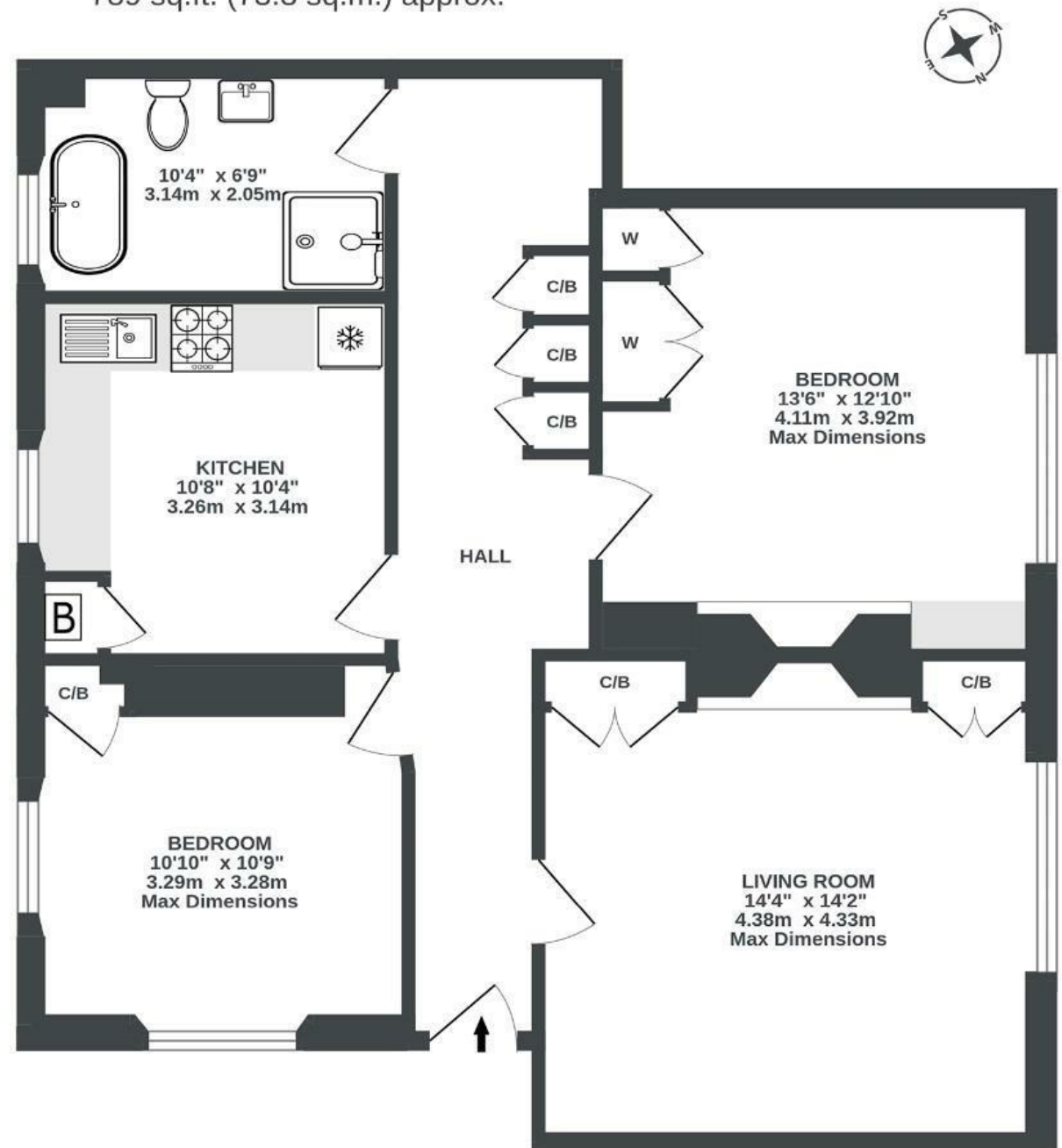
The Clifton Dispensary

HOTWELLS

APPROXIMATE FLOOR AREA
73.3 SQM / 789 SQFT



GROUND FLOOR
789 sq.ft. (73.3 sq.m.) approx.



Illustrations are for reference purposes only, measurements are approximate, not to scale.

Boardwalk

The Clifton

DOWRY SQUARE, BRISTOL

£

£450,000

zzz

2 Bedrooms



BS8 4SL



1 Bathrooms

"This has been a great first home for us; from working by the window, looking out over the garden to relaxing in a deep bath on a winter's night. The square has a warm community feel with neighbors hosting parties and events such as the Clifton and Hotwells open gardens. We have had many walks along the Harbourside, frequently visit the shops and cafes at Clifton Village and are spoilt for choice for local pubs, from the cosy vibes at the Merchants to open mic nights at the Grain Barge."

