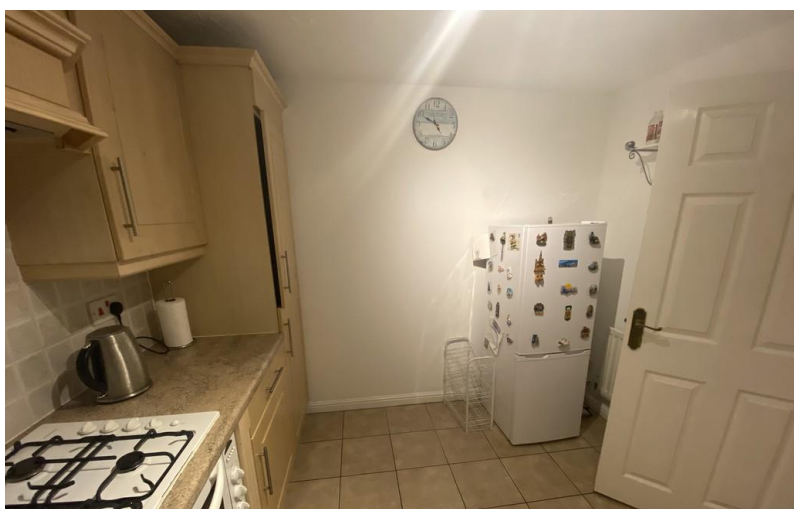


**TO LET**



## **Morgan Le Fay Drive**

3 Bedrooms, 2 Bathroom, End of Terraced

**£1,600 pcm**



## Morgan Le Fay Drive

End of Terraced,  
3 bedroom, 2 bathroom

£1,600 pcm

Date available: 20th February 2026

Deposit: £1,846.15

Unfurnished

Council Tax band: D

- 3 Bedrooms
- Cloakroom
- Ensuite
- Gas central Heating
- Gas hob electric oven
- Conservatory
- Garden

HALL Shoe cupboard and cloakroom

KITCHEN 3.26m x 2.92m Space for white goods, Gas oven and electric hob, good range of base and wall units. Window to front aspect.

CLOAKROOM Handbasin, low level wc and window with obscured glass to side aspect

LOUNGE 4.94M X 4.78M Good sized room with window and patio door to Conservatory, stairs leading to first floor.

CONSERVATORY Leading to small patio and garden.

BEDROOM 1 3.82m x 3.35m Double room. Window to front aspect

ENSUITE Handbasin, low level WC

%epcGraph\_c\_1\_331%





BEDROOM 2 3.18m x 2.79m Double room

BEDROOM 3 2.68m x 2.13m Single room with rear aspect.

GARDEN Mostly laid to lawn with decking at rear



---

## Martin & Co Chandler

46 London Road • • Southampton • SO15 2AH

T: 02380 390012 • E: [chandlersford@martinco.com](mailto:chandlersford@martinco.com) <http://www.martinco.com>

# 02380 390012



**Accuracy:** References to the Tenure of a Property are based on information supplied by the Seller. The Agent has not had sight of the title documents. A Buyer is advised to obtain verification from their Solicitor. Items shown in photographs including but not limited to carpets, fixtures and fittings are not included unless specifically mentioned within the sales particulars. They may however be available by separate negotiation. Buyers must check the availability of any property and make an appointment to view before embarking on any journey to see a property. No person in the employment of the agent has any authority to make any representation about the property, and accordingly any information given is entirely without responsibility on the part of the agents, sellers(s) or lessors(s). Any property particulars are not an offer or contract, nor for part of one. **Sonic / laser Tape:** Measurements taken using a sonic / laser tape measure may be subject to a small margin of error. **All Measurements:** All Measurements are Approximate. **Services Not tested:** The Agent has not tested any apparatus, equipment, fixtures and fittings or services and so cannot verify that they are in working order or fit for the purpose. A Buyer is advised to obtain verification from their Solicitor or Surveyor.