

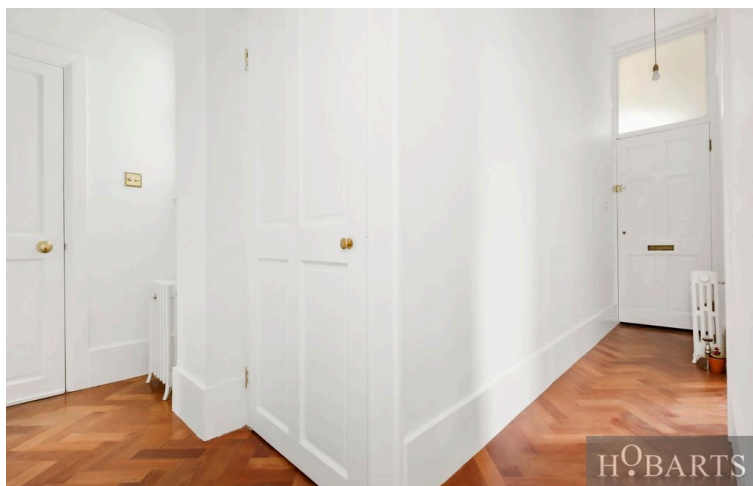
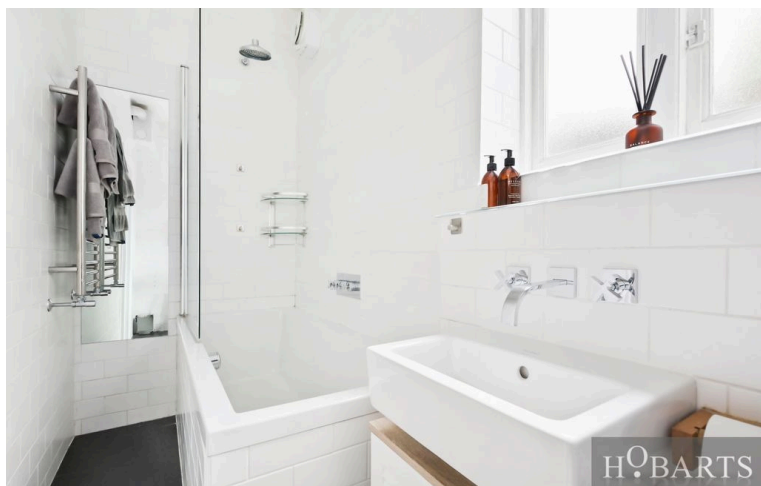
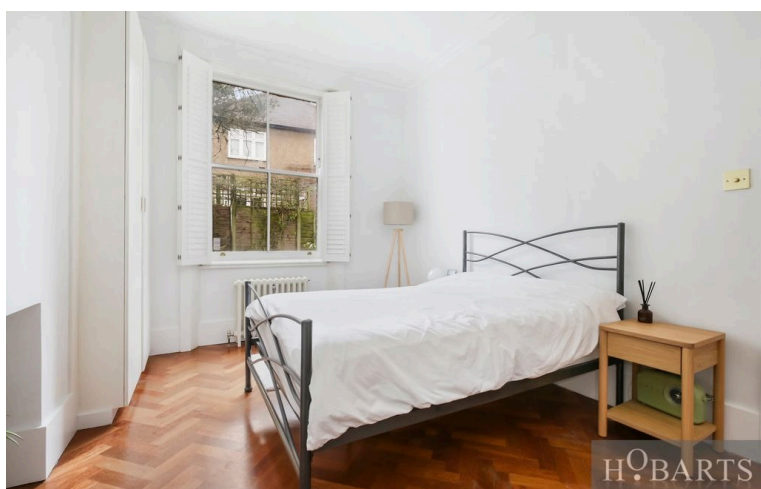
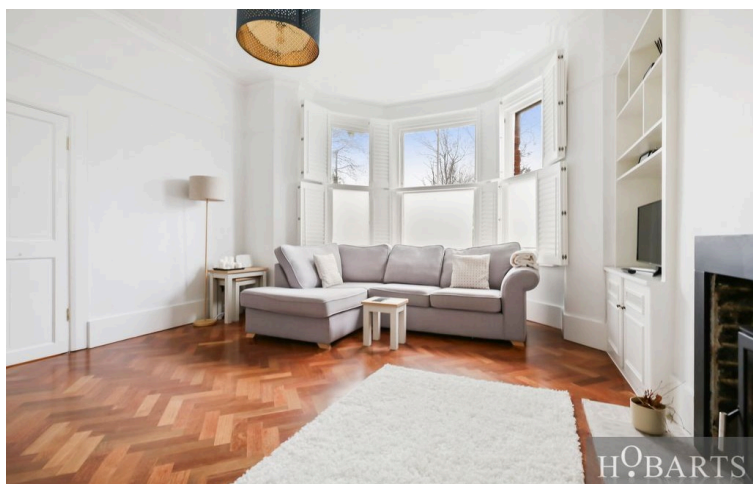
STYLISH AND BEAUTIFULLY PRESENTED TWO-DOUBLE BEDROOM FACING GROUND FLOOR EDWARDIAN PERIOD MAISONNETTE WITH DIRECT ACCESS TO ITS OWN ATTRACTIVE SOUTH/WEST FACING SIDE & REAR GARDEN. The stylish & tastefully presented property retains much of the building's original character and charm. Still, it has benefited from much latter-day modernisation. It would ideally suit discerning purchasers looking for a 'ready to move into' home that is accessible to all amenities, including Alexandra Palace National Rail station (20/25 Mins City/West End) and the attractive green surroundings of Alexandra Park & palace itself.

Dorset Road, Alexandra Park, London, N22 7SL

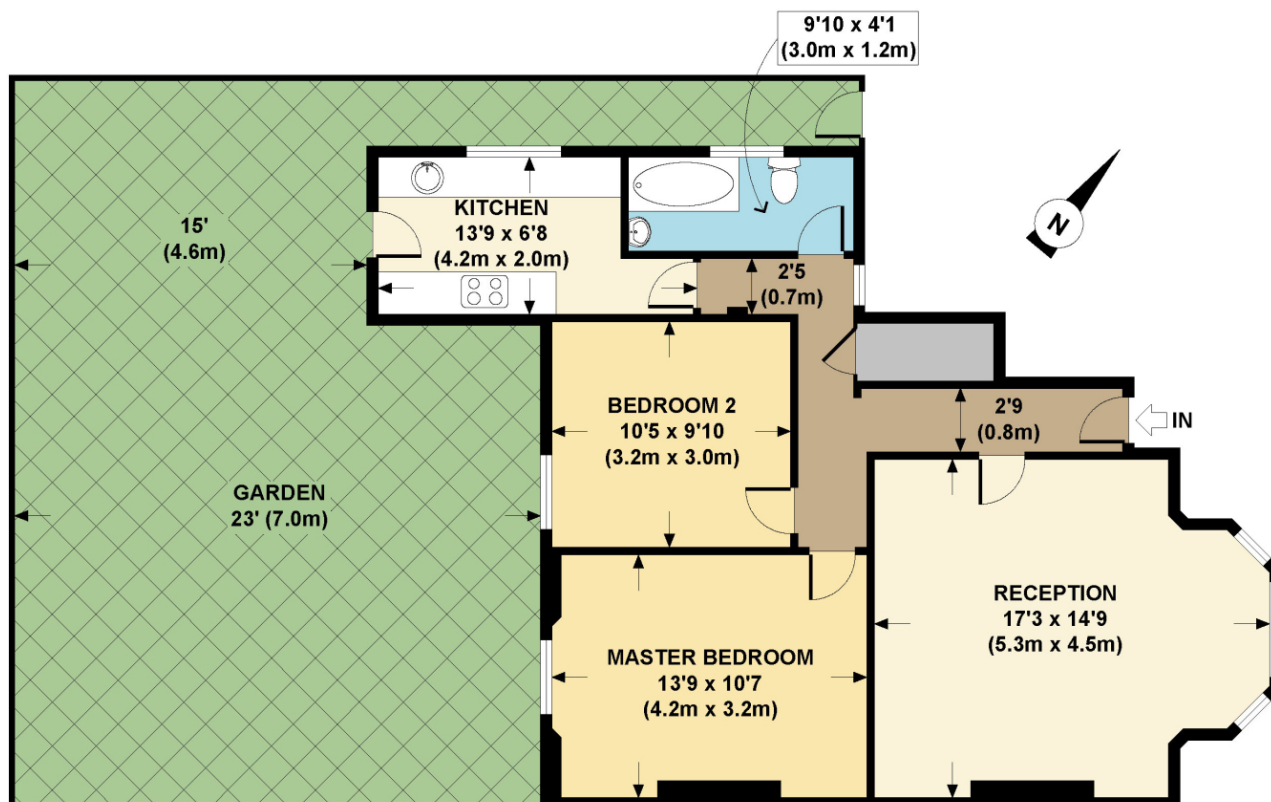
£625,000 | Share of Freehold

HOBARTS ESTATE AGENTS - LONDON (North)
8 CRESCENT ROAD
Alexandra Park
LONDON N22 7RS

sales@hobartsproperty.co.uk
www.hobartsproperty.co.uk
0208 348 3333



- Two-Double Bedrooms
- New Fitted Kitchen
- Period Features & Characteristics
- Own Front Entrance
- (20/25 Mins City/West End)
- Contemporary Bath/Shower Room/WC
- Side Pedestrian Access (bicycles etc.)
- South/West Facing Rear Garden
- Close to Park/Palace/Rail
- Hardwood Flooring
- Frontal Lounge/Reception
- CHAIN FREE

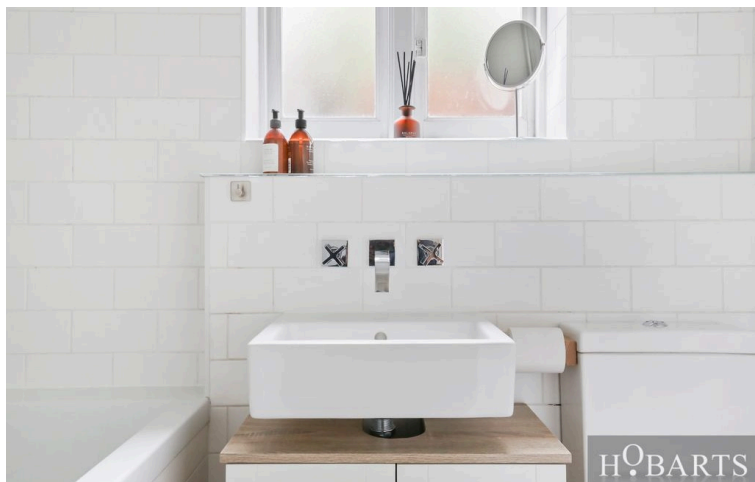


GROUND FLOOR
GROSS INTERNAL
FLOOR AREA 711 SQ FT

APPROX. GROSS INTERNAL FLOOR AREA 711 SQ FT / 66 SQ M.
DORSET ROAD, N22

HOBARTAP8889

THIS IMAGE IS ILLUSTRATIVE ONLY - NOT TO SCALE
No accuracy to this image, text or measurements is guaranteed. Copyright : The Image Tailor Ltd. 2009 -
Unauthorised reproduction prohibited - www.theimagetailor.com



Energy Efficiency Rating		
	Current	Potential
Very energy efficient - lower running costs		
(92+) A		
(81-91) B		
(69-80) C		
(55-68) D	64	75
(39-54) E		
(21-38) F		
(1-20) G		
Not energy efficient - higher running costs		
England, Scotland & Wales		
EU Directive 2002/91/EC		

Address: London, N22

Tenure:
Share of Freehold

Viewings:
Strictly by appointment via
HOBARTS ESTATE AGENTS
0208 348 3333

Contact:
8 CRESCENT ROAD, Alexandra
Park, LONDON N22 7RS

sales@hobartsproperty.co.uk
www.hobartsproperty.co.uk

rightmove

PrimeLocation.com

homes24.co.uk

Zoopa.co.uk

propertyfinder.com



These property details, including measurements, floor plans and items depicted in photographs etc. are intended only as a brief guide to prospective purchasers and are not intended to be relied upon for any purpose whatsoever. Any interested party should satisfy themselves by inspection or otherwise as to the correctness of each statement contained in these details.