



Kingston Close, TW11

£519,950

This modern ground-floor flat is centrally located, has two bedrooms, a private garden, and a garage, with no onward chain allowing for a quick move.

Kingston Close is just off Cromwell Road and within easy reach of Teddington High Street and mainline station. Bushy Park, the River Thames and Kingston town centre are all close by.

Features

- Two Double Bedrooms
- Central Location
- Private Garage
- Ground Floor
- Excellent Condition
- Private Garden



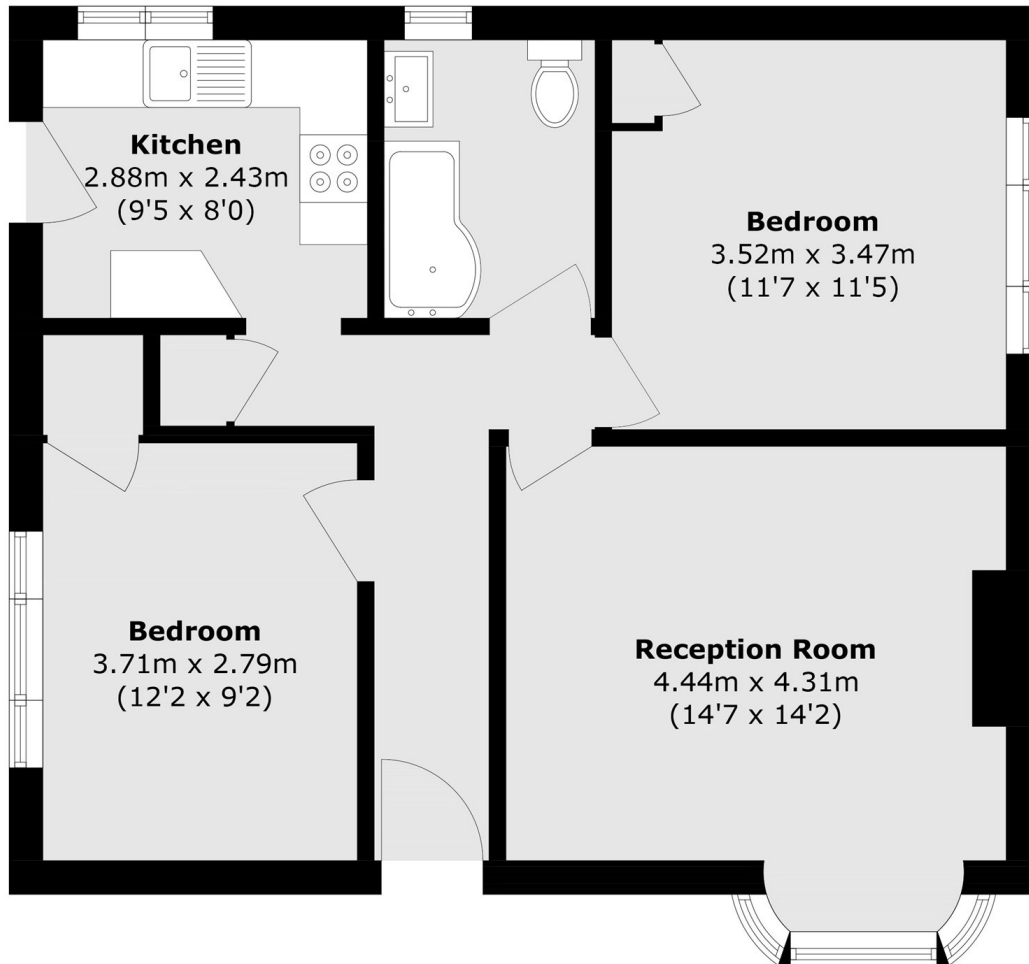
Kingston Close, TW11

From your private entrance, the reception room is bright and spacious with a feature fireplace with plenty of space to relax and dine. The kitchen offers modern units. Completing the accommodation there are two double bedrooms, one with fitted wardrobes and in addition there is a modern bathroom.

Externally, there is access to private garden. The garage is in a separate block and there are communal gardens to the of the building.



Kingston Close, Teddington, TW11



Total area (approx.): 63.3 sq. m (681.3 sq. ft)