

**SELLING & RENTING  
HOMES**  
— Since 2005 —



**LAND ESTATES**  
SALES, LETTINGS & MANAGEMENT



**WILLIAM MUNDY WAY**

**DARTFORD**

**£1,850 Per Month**

## TOP FLOOR APARTMENT, AVAILABLE ASAP!

Land Estates are delighted to introduce this spacious, top floor apartment located on the popular Langley Square development.

Offering 766 sq ft in total plus a huge balcony that stretches across the length of the entire apartment.

This apartment boasts modern and stylish living space, with good size hallway and large storage cupboard, open plan kitchen and living area, two spacious double bedrooms, luxury en-suite shower room to the master and a modern family bathroom. The master bedroom has integrated wardrobes.

The apartment also benefits from two allocated parking spaces and a lift to all the floors.

William Mundy Way is in an ideal location, it is within walking distance to Dartford Train Station, Dartford Town Centre and a variety of schools.

The property is offered unfurnished and is available ASAP.

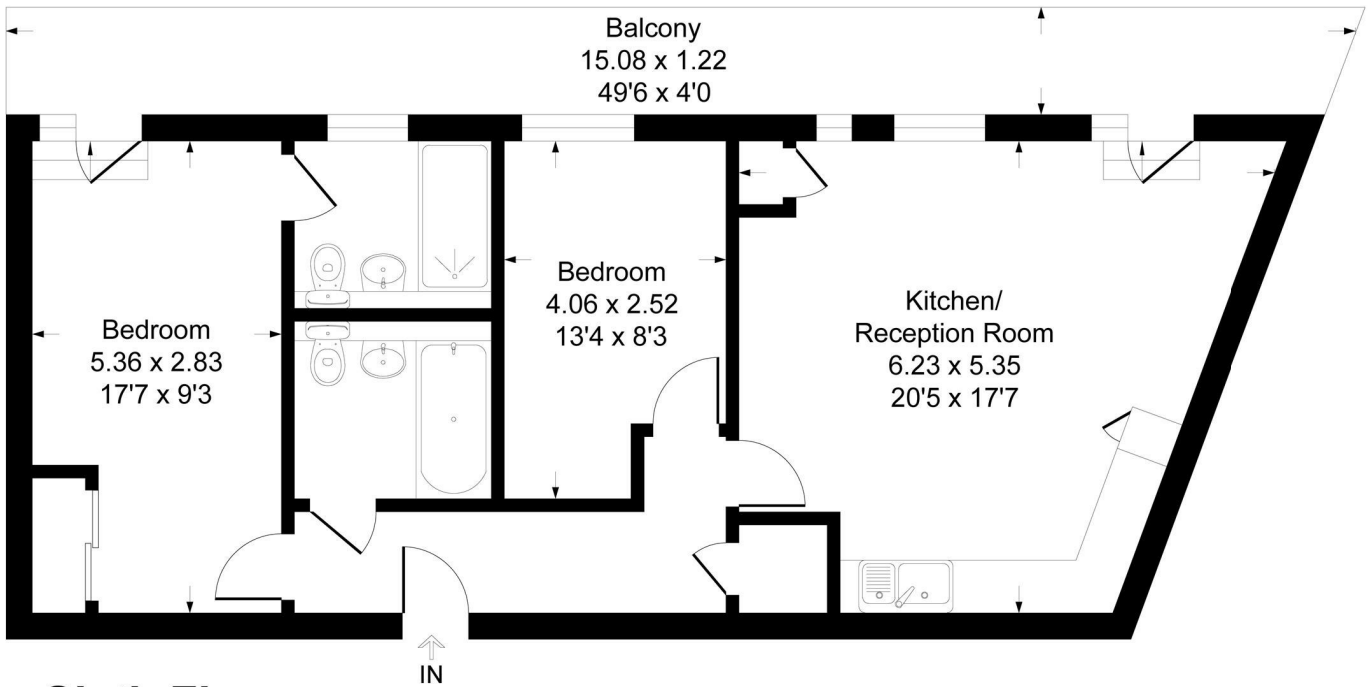
Please contact Land Estates to arrange a viewing.





# William Mundy Way, DA1

Approximate Gross Internal Area 71.1 sq m / 766 sq ft



## Sixth Floor



This plan is for layout guidance only. Not drawn to scale unless stated. Windows and door openings are approximate. Whilst every care is taken in the preparation of this plan, please check all dimensions, shapes and compass bearings before making any decisions reliant upon them.

Produced By Planpix



Energy Efficiency Rating		
	Current	Potential
Very energy efficient - lower running costs		
(92 plus) <b>A</b>		
(81-91) <b>B</b>	<b>84</b>	<b>84</b>
(69-80) <b>C</b>		
(55-68) <b>D</b>		
(39-54) <b>E</b>		
(21-38) <b>F</b>		
(1-20) <b>G</b>		
Not energy efficient - higher running costs		
<b>England &amp; Wales</b>	EU Directive 2002/91/EC	

**EPC Rating: B    Council Tax Band: D**

Agents Note: Whilst every care has been taken to prepare these particulars, they are for guidance purposes only. All measurements are approximate and are for general guidance purposes only and whilst every care has been taken to ensure their accuracy, they should not be relied upon and potential buyers/tenants are advised to recheck the measurements

Land Estate  
6 Market Street  
Dartford  
Kent  
DA1 1ET

01322 413501  
info@landestate.co.uk  
www.landestate.co.uk



**LAND ESTATES**  
SALES, LETTINGS & MANAGEMENT