

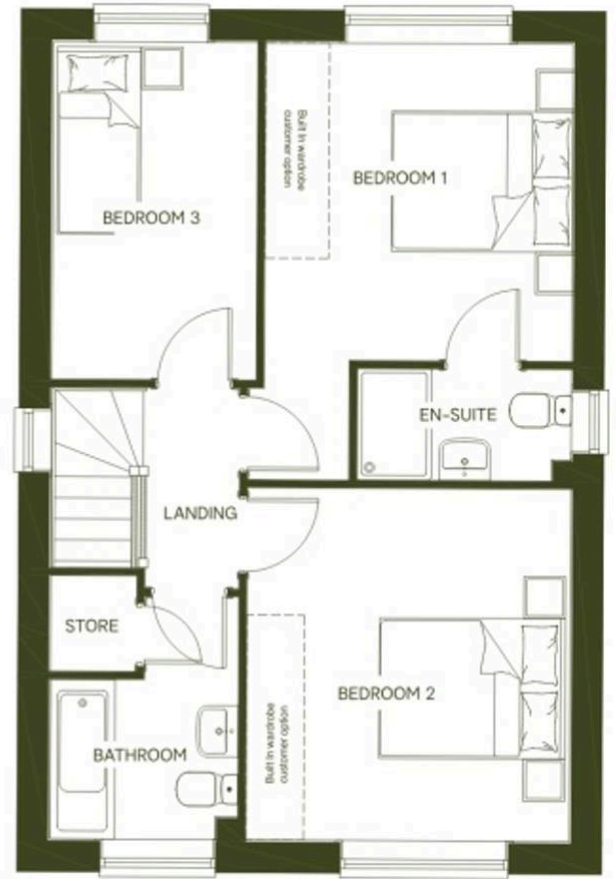
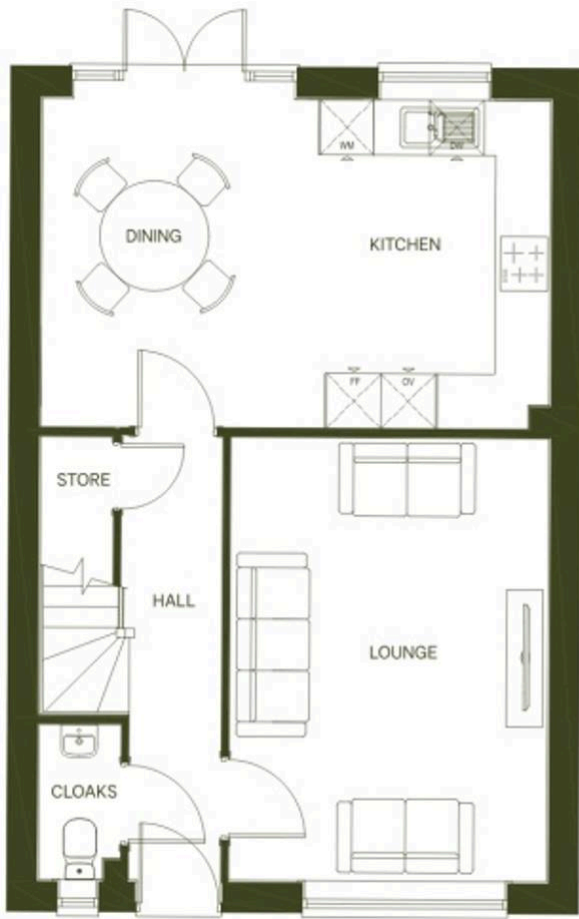


## Plot 19 – Oxford, Wrexham Road, Wrexham – LL12 9DG

£329,000

Prices for these impressive homes range from £326,995 to £454,995, making them an attractive proposition for a wide range of buyers. The Oxford is a three bedroom detached home which is fully customisable by WILLOW which is a superb opportunity to customise your new home within a highly regarded development, offering the perfect blend of comfort and contemporary style. A newly built property by the established developers Castle Green, who are well known for their 5 star rated builders ensuring the highest standards of quality and attention to detail throughout.

Whether you are taking your first step onto the property ladder or seeking a stylish, low maintenance family home, this property represents an outstanding opportunity to secure a residence that will suit your lifestyle now and in the future, contact us to arrange your viewing today.



BRITISH  
PROPERTY  
AWARDS  
2025  
★★★★★  
GOLD WINNER  
ESTATE AGENT  
IN FLINTSHIRE



BRITISH  
PROPERTY  
AWARDS  
2025  
★★★★★  
GOLD WINNER  
ESTATE AGENT  
IN DENBIGHSHIRE

# YOUR FREE PROPERTY REPORT



WE OFFER FREE ADVICE

**MORTGAGES - SURVEYS - SOLICITORS**

