



Eaton Place
Belgravia, SW1X

CHESTERTONS





Set within an elegant period building on the prestigious Eaton Place, this impressive 2,215 sq ft four-bedroom maisonette is arranged over the ground and lower ground floors, offering a rare blend of generous proportions and refined living space.

The property boasts high ceilings throughout, enhancing the sense of space and light, particularly within the expansive, well-lit reception room perfect for both relaxing and entertaining. A separate dining room provides an ideal setting for more formal occasions, while the well-appointed kitchen offers practicality and convenience.

All four bedrooms are newly carpeted, creating a warm and comfortable retreat, complemented by stylish wooden flooring in the main living areas. The home also benefits from ample storage throughout, ensuring a clutter-free living environment.

To the front and rear, private patio gardens provide valuable outdoor space.

This exceptional maisonette combines classic period charm with modern comfort in one of London's most sought-after addresses.

- Four double bedrooms
- Four bathrooms
- Maisonette
- Period building
- Newly refurbished
- Front & rear patio gardens

£13,000 pcm

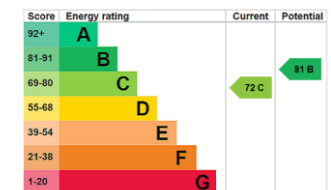
Additional tenant charges apply (fees apply to non-AST tenancies only)

Tenancy Agreement Fee: £300

References per Tenant/Guarantor: £60

Inventory check (approx. £100 – £250 inc. VAT)

chestertons.co.uk/property-to-rent/applicable-fees



Minimum Term: 12 months
Deposit Required: 6 weeks
Local Authority: City Of Westminster
Council Tax Band: H
EPC Rating: C
Unfurnished

Chestertons Knightsbridge & Belgravia Lettings

31 Lowndes Street
 London
 SW1X 9HX

knightsbridgelettingsusers@chestertons.co.uk

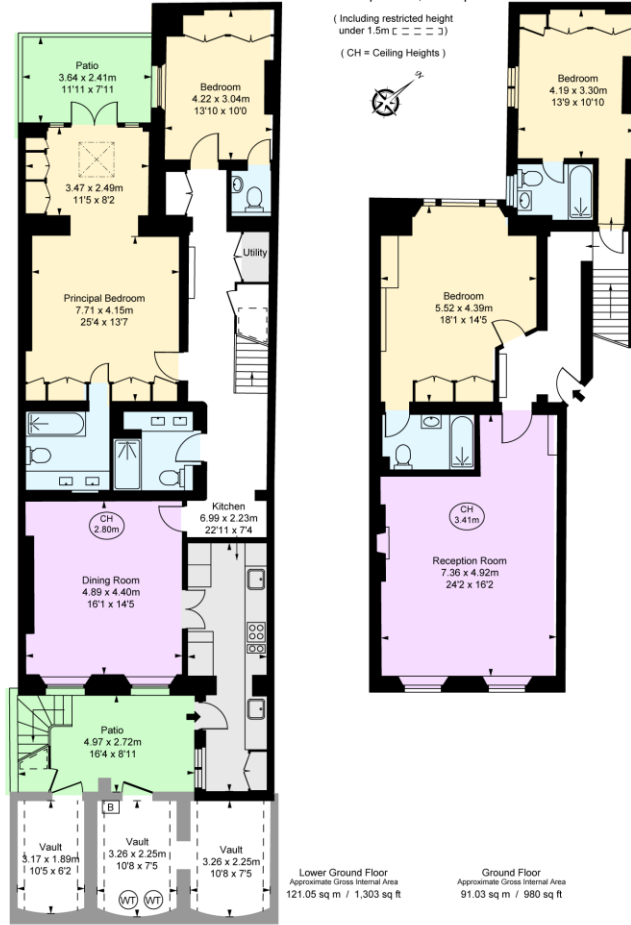
02072353530

chestertons.co.uk

Eaton Place, SW1X

Approximate Gross Internal Area
 212.08 sq m / 2,283 sq ft
 Vault
 21.37 sq m / 230 sq ft
Total Areas Shown On Plan
233.45 sq m / 2,513 sq ft

(Including restricted height
 under 1.5m (5' 0" = 150))
 (CH = Ceiling Heights)



This plan is not to scale. It is for guidance and not for valuation purposes.
 All measurements and areas are approximate only, and have been prepared in accordance with the current edition of the RICS Code of Measuring Practice.
 © F. Urban Performance

Chesterton UK Services Limited trading as Chestertons for themselves and for the vendor of this property whose agents they are, give notice that (i) these particulars do not constitute any part of an offer or contract, (ii) all statements contained within these particulars are made without responsibility on the part of Chestertons or the vendor, (iii) whilst made in good faith, none of the statements contained within these particulars are to be relied upon as a statement or representation of fact, (iv) any intending purchasers must satisfy themselves by inspection or otherwise as to the correctness of each of the statements contained within these particulars, (v) the vendor does not make or give either Chestertons or any person in their employment any authority to make or give representation or warranty whatsoever in relation to this property. Wide angle lenses may be used. ©Copyright Chestertons | Chesterton Global Ltd | Registered Office 5th Floor, The Lantern, 75 Hampstead Road, London, NW1 2PL Registered Company Number 05334580.



This paper is 100% recyclable