

Rusper Road, Horsham

Offers Over £375,000

2 1 1



A charming Period Cottage located close to Littlehaven Station, boasting a 75ft Rear Garden, excellent potential to Convert the Loft (stpp) and a fantastic Open Plan Living Area.

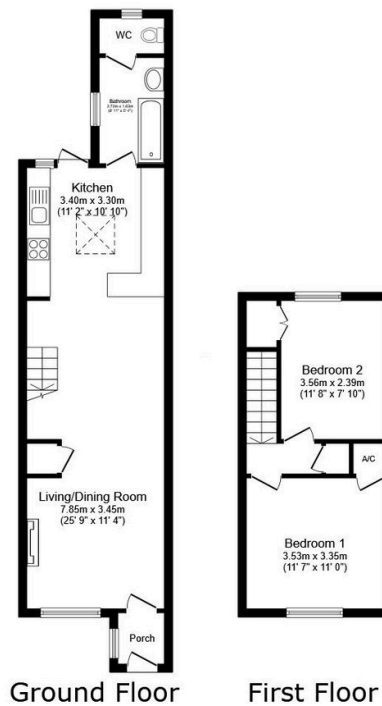
Tenure: Freehold

Council Tax Band: D

EPC: Current D - Potential B

Key Features

- Watch Our Video Tour
- Two Generous Bedrooms
- Mature 75ft Rear Garden
- 25ft Open Plan Living Area
- Popular School Catchment
- Attractive Period Cottage
- Potential To Convert The Loft (stpp)
- Updated 11'2 x 10'10 Kitchen
- Close To Littlehaven Station
- Open Fireplace



Total floor area: 75.9 sq.m. (817 sq.ft.)

This floor plan is for illustrative purposes only. It is not drawn to scale. Any measurements, floor areas (including any total floor area), openings and orientations are approximate. No details are guaranteed, they cannot be relied upon for any purpose and do not form any part of any agreement. No liability is taken for any error, omission or misstatement. A party must rely upon its own inspection(s). Powered by www.Propertybox.io