

19 Milner Road, Finedon, NN9 5LW

£245,000

Located in the village of Finedon is this spacious 3 bedroom semi-detached home which offers a perfect blend of comfort and convenience. With three reception rooms, this property is ideal for both family living and entertaining guests. The large conservatory provides a bright and airy space, perfect for enjoying the garden views throughout the year.

The house boasts three well-proportioned bedrooms, ensuring ample space for relaxation and rest. The dining area, separate from the lounge, allows for a more formal dining experience, making it an excellent setting for family meals or gatherings with friends.

Finedon is a popular location, known for its friendly community and excellent amenities. The property benefits from good road links, making it easy to access nearby towns and cities. This home is not just a place to live; it is a great opportunity to purchase a good sized home in a pleasant and quiet area.

Whether you are a first-time buyer or looking for a family home, this property is an ideal purchase for anyone looking for a property they can put their own stamp on.

CALL HAWKSBYS NOW TO ARRANGE YOUR VIEWING 01933 22 44 44





Entrance Hall
 Lounge
 11'7 x 11'7 not inc bay
 Kitchen
 10'4 x 9'2
 Dining Area
 8'9 x 8'4
 Conservatory
 17'2 x 11'1
 Landing

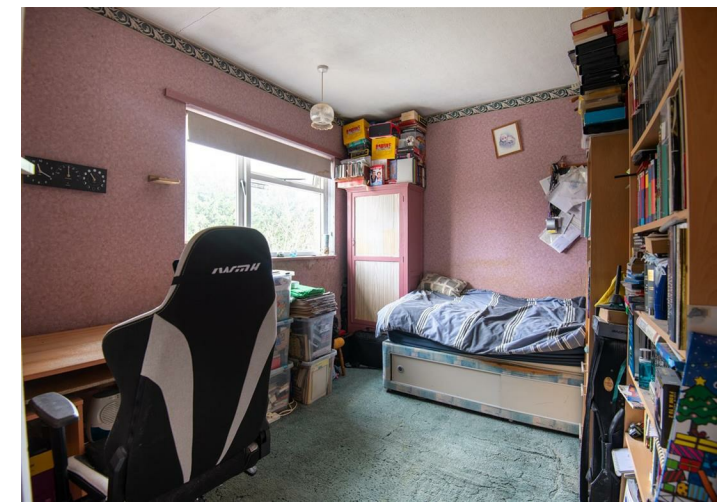


Bedroom 1
 12'1 x 11'5
 Bedroom 2
 11'5 x 8'7
 Bedroom 3
 8'9 x 8'
 Bathroom
 6'3 x 5'6



Tenure: Freehold
 Council Tax Band: B

Viewing strictly by
 appointment with
 Hawksbys on 01933
 724444



Agents Note: Hawksbys have not tested any apparatus, equipment, fitting or services and so cannot verify they are in working order. The Buyer is advised to obtain verification from their Solicitor or Surveyor.
 Internal Photographs: If photographs are included showing the interior of a property, these are to show the layout, and purchasers should check to confirm whether any appliances are included in the purchase price.
 Offer Procedure: To make an offer you will need to make an appointment with our Financial Advisor to be able to process your offer in the best possible light.
 Floor Plans: The plans included in these details are provided for guidance purposes only to show the general layout of the property, they are in some instances NOT to scale.

Buying a house can be complex and stressful. We try very hard to make the transaction as smooth and as trouble free as possible for buyers by guiding them through the process at every stage, including helping them with their mortgage arrangements.

YOUR HOME IS AT RISK IF YOU DO NOT KEEP UP REPAYMENTS ON A MORTGAGE OR ANY OTHER LOANS SECURED ON IT.
 Life Assurance usually required.

AGENTS NOTE: THE ICON ON THE MAP REPRESENTING THE PROPERTY DOES NOT SHOW ITS EXACT POSITION IN RELATION TO THE ROAD OR CUL-DE-SAC.

Some of the photographs are taken with an extreme wide lens, as as 18mm, and in some circumstances make the rooms look larger than they are!

