

SNELLERS

ESTATE AGENTS



Post Lane, TW2

£2,350 PCM

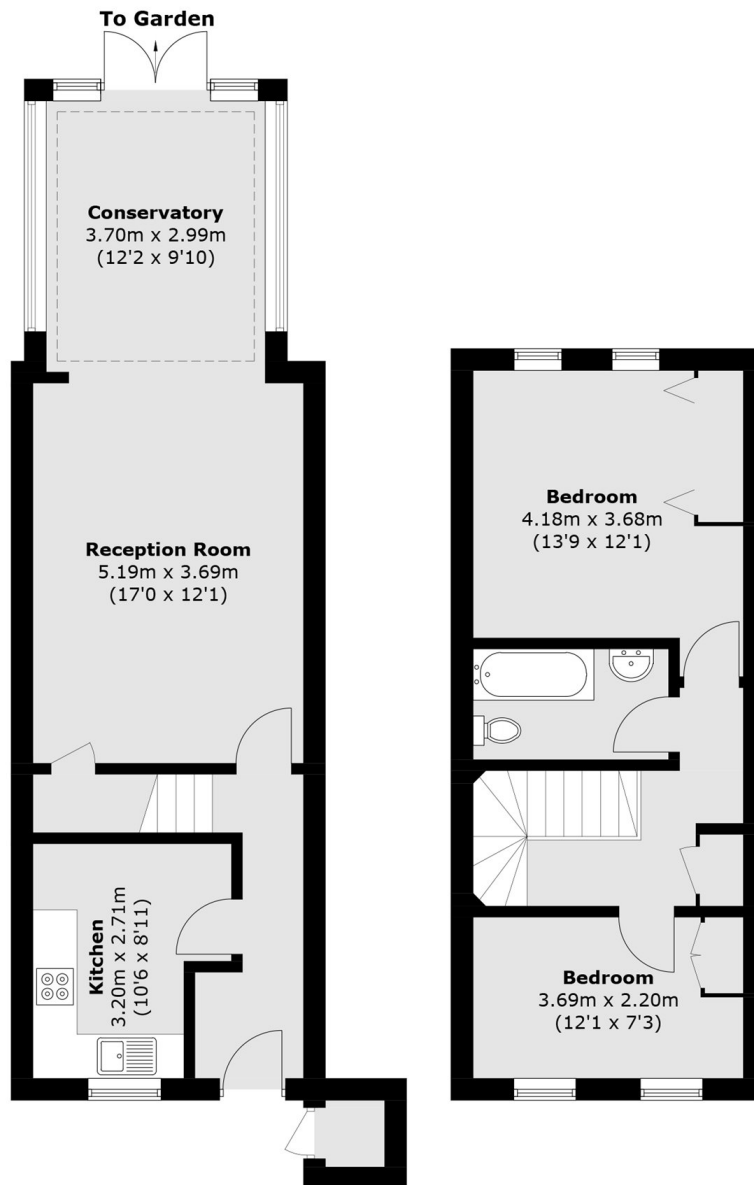
An impressive home set on a quiet development with a large living / dining area, good sized kitchen, conservatory leading onto the garden, two good sized double bedrooms and a family bathroom.

Post Lane is a quiet cul de sac in Twickenham. The location gives easy access to the A316, M3 and is a short walk to Whitton station. Twickenham Green and town centre are also within walking distance.

- Popular Development • Two Double Bedrooms • Conservatory •
- Garage • Off Street Parking • Views over Kneller Park •

SNELLERS

ESTATE AGENTS



Ground Floor

First Floor

Total area (approx.): 82.5 sq. m (887.9 sq. ft)
External Cupboard: 0.8 sq. m (8.6 sq. ft)

Snellers Twickenham Lettings
64-66 Heath Road
Twickenham
TW1 4BX
020 8892 5678
twickenhamlettings@snellers.co.uk

Energy Rating: D We aim to make our particulars both accurate and reliable. However they are not guaranteed; nor do they form part of an offer or contract. If you require clarification on any points then please contact us, especially if you're traveling some distance to view. Please note that appliances and heating systems have not been tested and therefore no warranties can be given as to their good working order