

Royal Crest Avenue, E16

£590,000

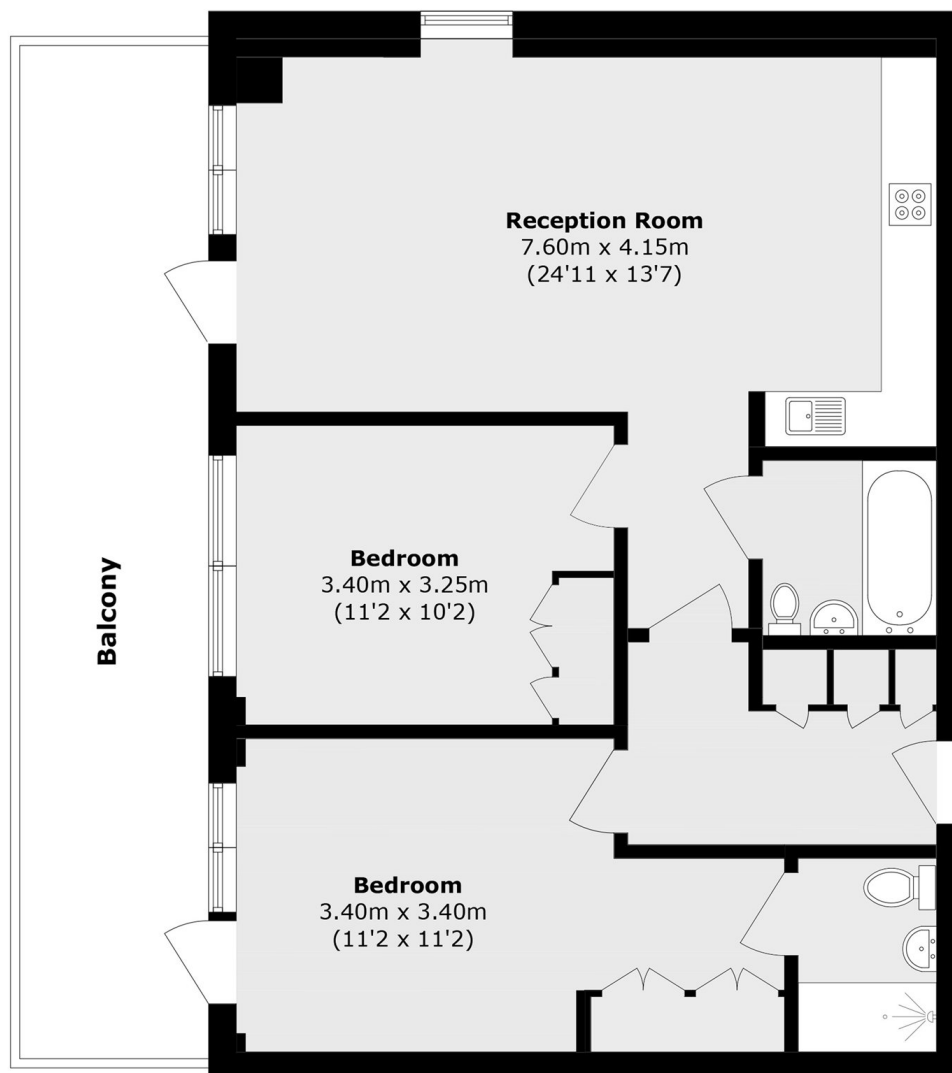
Offered to the market chain-free, this two-bedroom apartment is situated within a highly sought-after development. The property boasts floor-to-ceiling windows throughout, allowing an abundance of natural light, a modern specification, and integrated kitchen appliances. A 242 sq ft terrace is accessible via both the reception room and the principal bedroom. Residents also benefit from the use of a private concierge, gym, sauna, steam room, and swimming pool.

Flagship House is conveniently located just 0.3 miles from Docklands Light Railway Pontoon Dock DLR Station, providing excellent connections to The City and Canary Wharf. The property is also close to a number of green open spaces, with Thames Barrier Park Thames Barrier Park situated just 0.4 miles away (approximately an eight-minute walk). Additionally, ExCeL London ExCeL London is within easy reach, approximately 1 mile from the property.

Features

- Two Bedrooms
- Gym and Swimming Pool
- Modern Specification
- Natural Light
- 899 Square Feet
- 24 Hour Private Concierge

Royal Crest Avenue, London, E16



Total area (approx.): 83.6 sq. m (899.8 sq. ft)

Total area (approx.): 22.5 sq. m (242.1 sq. ft)