



Totteridge Lane, Totteridge, N20 8QQ
£1,150,000 Freehold Council Tax Band G

REAL ESTATES
Est.1981

Estate Agents · Residential Sales · Investments · Lettings

A beautifully presented three/four-bedroom extended semi-detached family home situated within a stone's throw of Totteridge & Whetstone Station and all the amenities of Whetstone High Road.

A wonderful sense of charm and character is evident from the moment you arrive, with the attractive front door and entrance offering a warm and inviting first impression.

The ground floor is entered via a characterful hallway leading to a bright and welcoming sitting room featuring a remote-controlled gas fireplace. There is a versatile downstairs fourth bedroom that could equally serve as a study. The heart of the home is an impressive open-plan living space incorporating a contemporary fitted kitchen with granite worktops, high-gloss wall and base units, glass splashbacks, and porcelain flooring with underfloor heating. This space opens seamlessly into generous lounge and dining areas overlooking the attractive rear garden.

Further ground-floor accommodation includes a shower room, utility room, internally accessed garage/workshop, additional storage room with garden access, and a garden room with sliding doors opening onto the patio, ideal as a home office or games room, which adds valuable flexibility.

On the first floor, the principal bedroom benefits from an en-suite bathroom. The second bedroom also benefits from an en-suite shower room, while the third bedroom has its own WC.

Outside, the private rear garden provides a peaceful setting with a paved terrace ideal for outdoor dining, complemented by a variety of mature plants and shrubs along the boundaries. To the front, a natural stone-paved driveway offers off-street parking for several vehicles and leads to a brick-built garage with timber double doors.

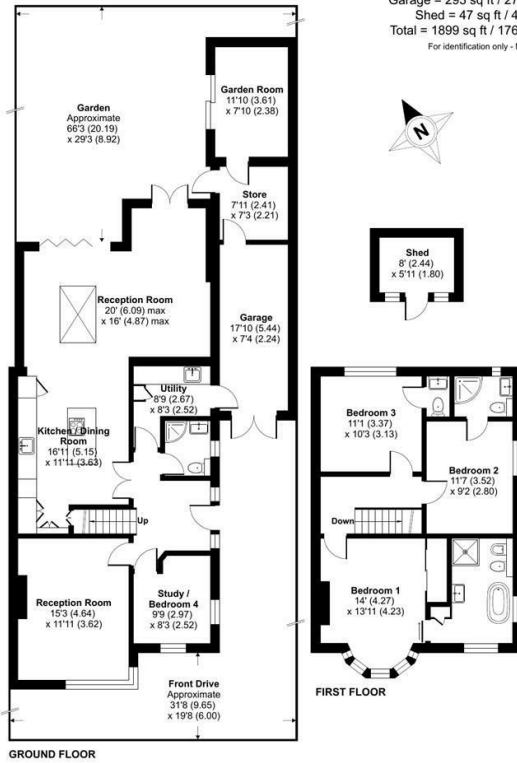
The property is ideally positioned within walking distance of Totteridge & Whetstone Station, while a range of shops, restaurants, leisure facilities, well-regarded schools and nearby green spaces make this an excellent family home in a highly sought-after location.





Totteridge Lane, London, N20

Approximate Area = 1559 sq ft / 144.8 sq m
 Garage = 293 sq ft / 27.2 sq m
 Shed = 47 sq ft / 4.3 sq m
 Total = 1899 sq ft / 176.3 sq m
 For identification only - Not to scale



Floor plan produced in accordance with RICS Property Measurement 2nd Edition, incorporating International Property Measurement Standards (IPMS2 Residential). © richcom 2026. Produced for Real Estates. REF: 1477239

Energy Efficiency Rating		Current	Potential
Very energy efficient - lower running costs	A		84
Energy efficient	B		
Decent	C		67
Less energy efficient	D		
Energy inefficient	E		
Very energy inefficient - higher running costs	F		
	G		

EU Directive



Real Estates Totteridge Office:
 32 Totteridge Lane
 Totteridge N20 9QJ

ll : 0208 445 3132
 e : info@realestates-wsp.co.uk
 w : www.realestates-wsp.co.uk