

SNELLERS

ESTATE AGENTS



Heath Road, TW1

£2,100 PCM

This beautifully presented one bedroom first-floor apartment is offered in excellent condition throughout and provides an exceptional blend of space, style, and convenience. Situated in the very heart of Twickenham High Street, the property features two generously sized bedroom, a modern bathroom, and a spacious open-plan kitchen, living, and dining area complete with a stylish contemporary kitchen ideal for both relaxing and entertaining



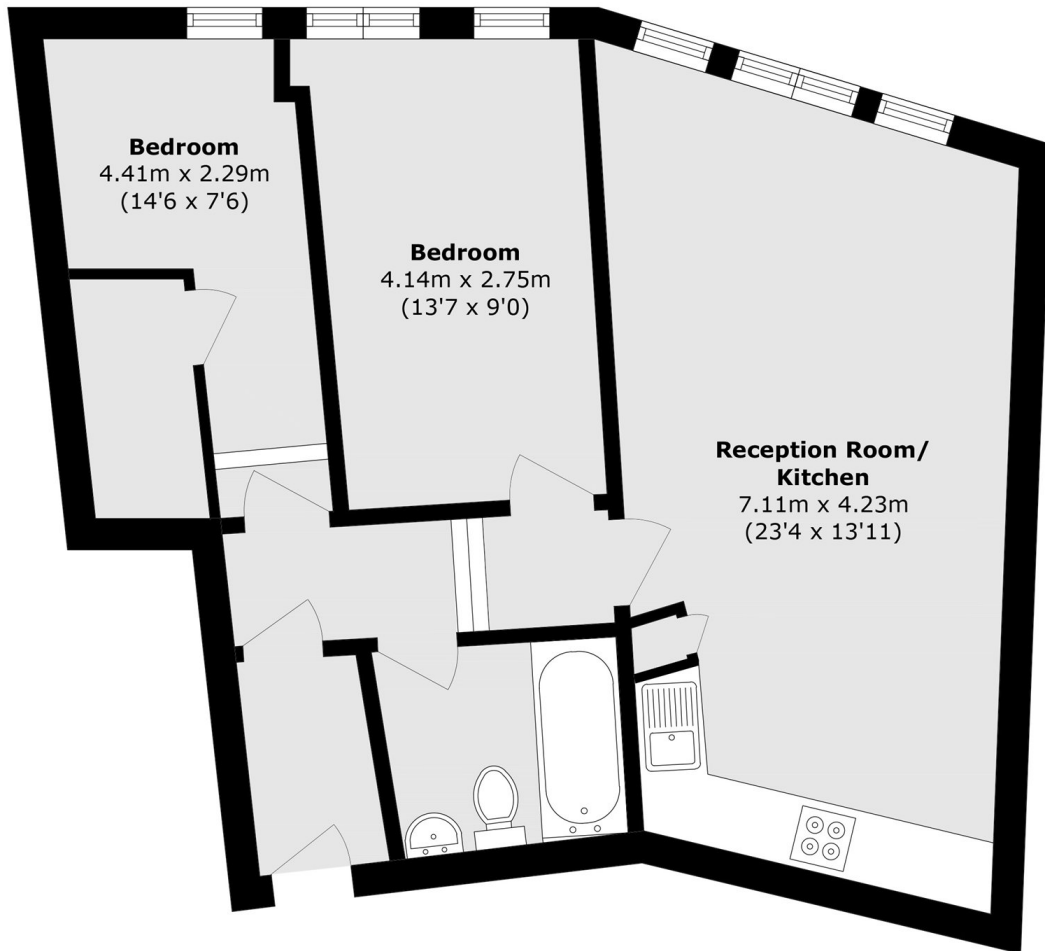
Heath Road is within walking distance of Twickenham Green and just 0.5 miles to Twickenham Station, for fast trains into London Waterloo. Positioned moments from shops, cafés, and restaurants, this superb apartment combines high-spec living with unbeatable convenience in the centre of Twickenham.

- High End Finish • Central Location • Twp Bedrooms •
- Unfurnished • Bright and Spacious • Close to Station •



SNELLERS

ESTATE AGENTS



Total area (approx.): 62.3 sq. m (670.5 sq. ft)

Snellers Twickenham Lettings
64-66 Heath Road
Twickenham
TW1 4BX
020 8892 5678
twickenhamlettings@snellers.co.uk

Energy Rating: We aim to make our particulars both accurate and reliable. However they are not guaranteed; nor do they form part of an offer or contract. If you require clarification on any points then please contact us, especially if you're traveling some distance to view. Please note that appliances and heating systems have not been tested and therefore no warranties can be given as to their good working order