



3 Manor Farm Mott Street, Loughton  
Loughton

£7,000 pcm



## 3 Manor Farm Mott Street

Loughton

A rare opportunity to let this exceptional four-bedroom barn conversion, newly completed in 2025 and set within the idyllic surroundings of High Beech, on the edge of Epping Forest.

- Built In 2025
- Great Location
- Modern
- Garage
- Four Bedroom Barn Conversion
- Charming Throughout





The property is arranged over two floors, with a thoughtfully designed layout that maximises natural light and space throughout. On the ground floor, a spacious entrance hallway leads to two generous double bedrooms, one of which benefits from a stylish en-suite shower room, while a separate family bathroom serves the second. The heart of the home is the expansive open-plan kitchen and dining room, fitted with high-end appliances and finished to an exceptional standard, ideal for entertaining and family living. A separate utility room offers additional practicality. Beyond the kitchen lies a magnificent lounge, measuring over 24 feet in length, featuring large windows and doors that open to the surrounding countryside views, bringing the outside in.

Upstairs, the first floor comprises two further double bedrooms, including a luxurious principal suite with en-suite bathroom, and a further double room also served by an en-suite, all accessed via a bright and airy central hallway.

Positioned in a private setting surrounded by natural beauty, yet just a short distance from the vibrant towns of Loughton and Epping, this home provides easy access to local amenities, well-regarded schools, and excellent transport links into Central London via the Central Line. It offers the perfect balance of peaceful rural living and city connectivity.

Available now and offered unfurnished, this unique home is ideal for families or professionals looking for a high-quality residence in a prestigious and tranquil location.

Council Tax Band G

Council Tax band: G

EPC Energy Efficiency Rating: B







# Mott Street, Manor Farm

Approx. Gross Internal 215 Area Sq M ( 2314.5 Sq Ft )

BUTLER & STAG



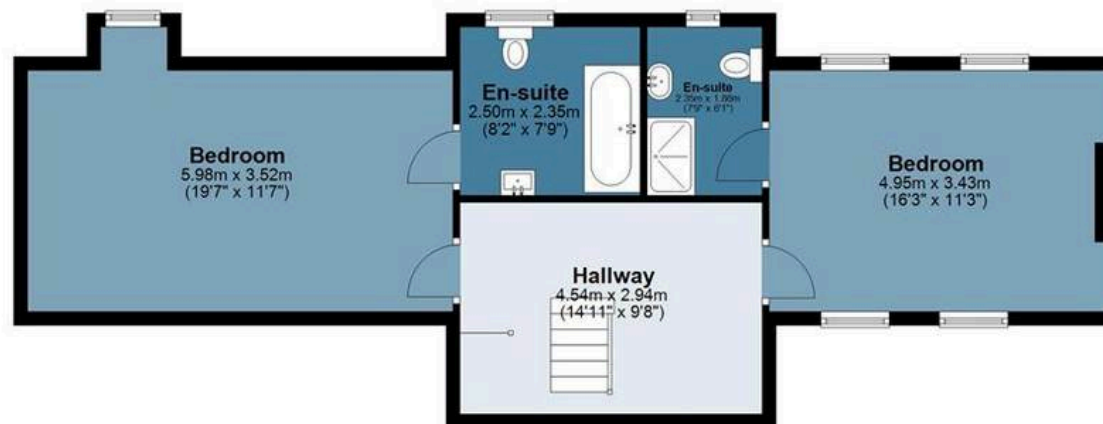
## Ground Floor

Approx. 151.4 sq. metres (1629.6 sq. feet)



## First Floor

Approx. 63.6 sq. metres (684.9 sq. feet)



Measurements are approximate and for illustration purposes only. While we do not doubt the accuracy and completeness, we advise you conduct a careful independent assessment of the property to determine monetary value.

# FROM EAST LONDON ENERGY TO WEST ESSEX EASE

## We Make Moving Home Easy.

At Butler and Stag, we do more than just connect London to West Essex – we make the move seamless. With offices spanning from vibrant East London to the tranquillity of West Essex, we understand the nuances of each area and the journey people take between them. Our marketing goes beyond standard listings, showcasing every property with precision, creativity, and reach that others simply can't match. Coupled with an unparalleled attention to detail, from first enquiry to final move-in, we ensure every client and customer feels informed, supported, and confident. Simply put, we do the little things that make a big difference, setting us apart in every step of the property experience.



LONDON   STRATFORD   SOUTH WOODFORD   BUCKHURST HILL   LOUGHTON   EPPING   BEYOND

# Like what you see? Let's talk

Book your **FREE** valuation now



01992 667666

theydon@butlerandstag.com

4 Forest Drive, Theydon Bois, CM16 7EY

[butlerandstag.uk](https://www.butlerandstag.uk)

IMPORTANT NOTICE - These particulars have been prepared in good faith and they are not intended to constitute part of an offer or contract. We have not performed a structural survey on this property and the services, appliances and specific fittings have not been tested. All photographs, measurements, floor plans and distances referred to are given as a guide and should not be relied upon.

BUTLER & STAG

