



Key Features

- ◆ Two-bedroom, ground floor flat
- ◆ Convenient Upperton Location
- ◆ Close to hospital and local schools
- ◆ Private entrance and garden
- ◆ Allocated parking space
- ◆ EPC rating C



Lewes Road, Upperton, Eastbourne

£1,200 PCM



Northwood are delighted to welcome to market this fantastic two-bedroom, ground-floor apartment in Upperton, Eastbourne.

Accommodation comprises open-plan living room/kitchen with integrated fridge-freezer and space/plumbing for washing machine, two double bedrooms and bathroom with shower over bath.

Further benefits include gas central heating, double-glazing, private entrance, private garden and allocated parking space.





Located close to Eastbourne District General Hospital and local schools with easy access to Eastbourne town centre and the sunshine coast, this beautiful apartment is a must see.

Please view our immersive virtual tour to fully appreciate this fantastic property:
<https://tour.giraffe360.com/04a3261051734bcf8af69c847cc86b6a>

Mobile Phone Coverage and Broadband speeds can be checked on the Ofcom website:
<https://checker.ofcom.org.uk/>

Council Tax Band B: £2064

Holding Deposit: £276.92 (one week's rent)

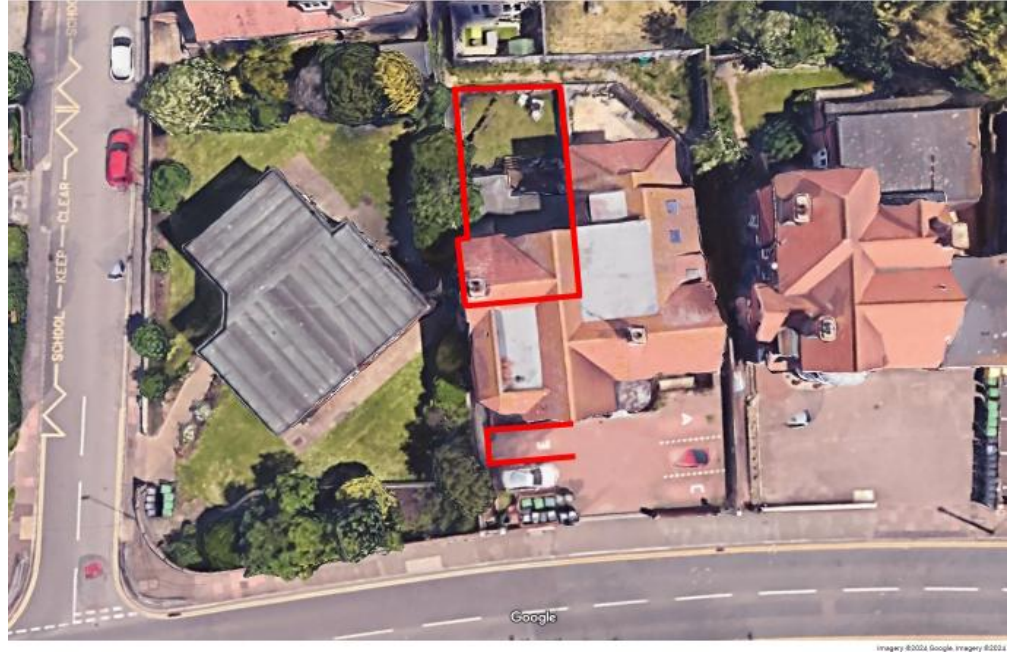
Full Deposit: £1384.61

1st month's rent + Full Deposit: £2584.61

Total household income must exceed £36,000.00 to be considered for this property.

This property is managed by Northwood, should a maintenance issue arise, it can be reported 24 hours a day via our website.

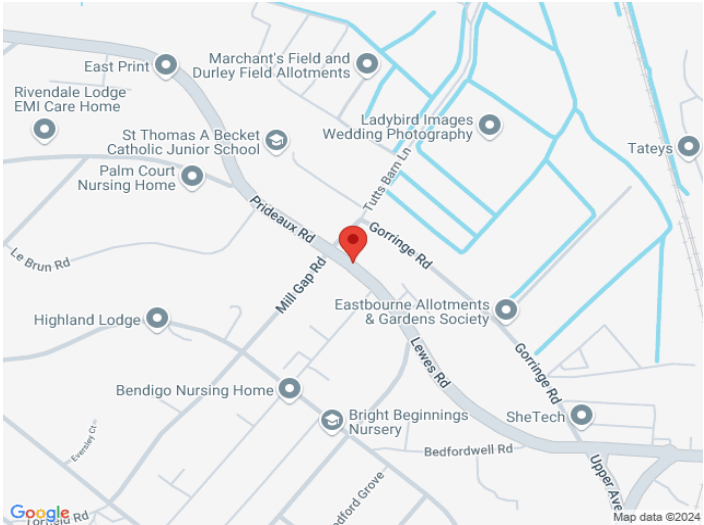
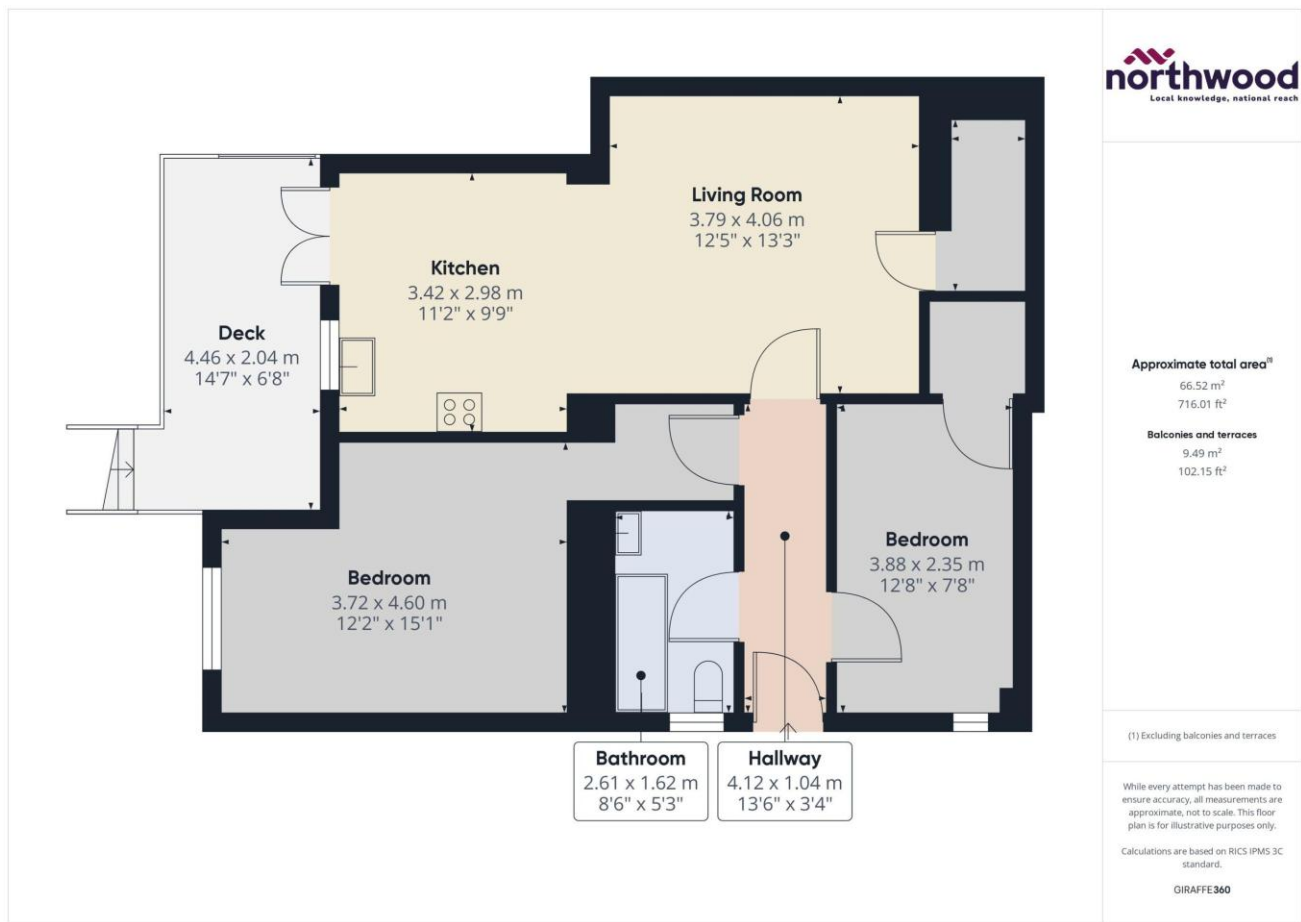




Imagery ©2024 Google Imagery ©2024



Imagery ©2024 Google Imagery ©2024 Airbus Maxar



SEE MORE ONLINE

Northwood
81-83 South Street
Eastbourne
BN21 4LR
01323 744544
eastbourne@northwooduk.com

northwood
Local knowledge, national reach