



## Kingsland Road, E8

£450,000

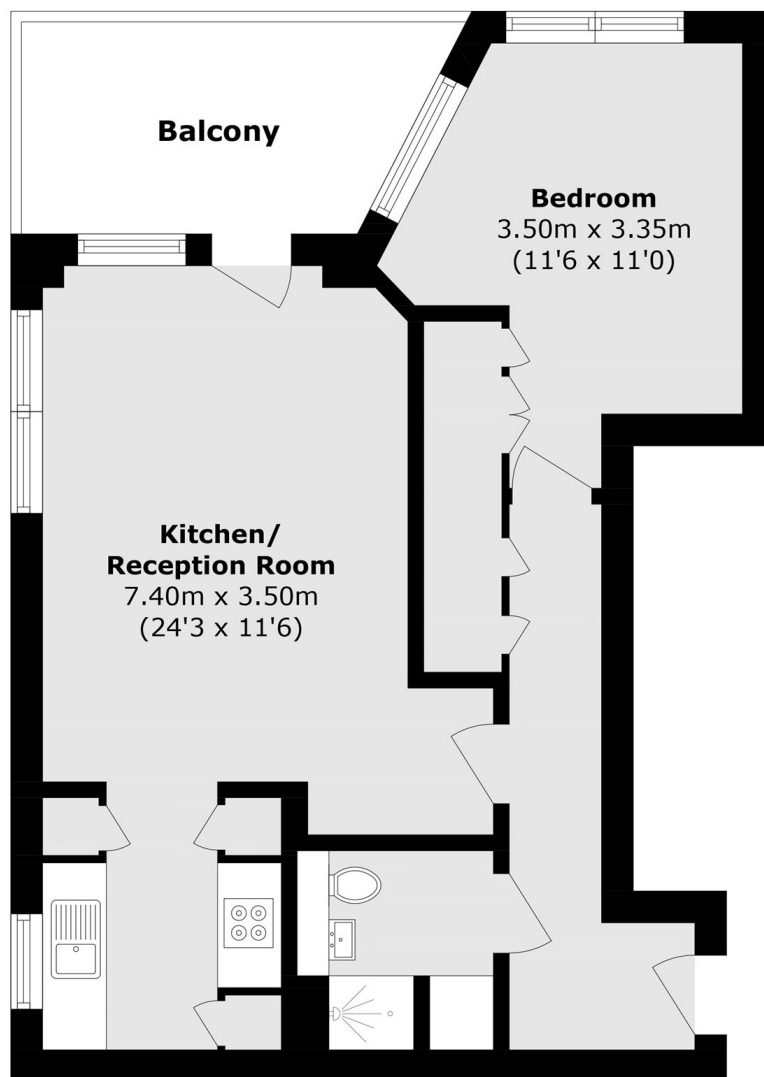
This one double bedroom apartment is ideally situated on the well connected Kingsland Road. Benefiting from a bright and spacious open-plan living and kitchen space which leads directly onto a large private West facing balcony.

Conveniently located in central Dalston close to an array of restaurants and independent cafés and bars. The property is also within walking distance of Shoreditch Park, Haggerston, London fields and Victoria park. Dalston Junction and Dalston Kingsland overground stations are only moments away and The City is a pleasant 30 minute stroll.

### Features

- Chain Free
- One Bedroom
- West-Facing Balcony
- Open-Plan
- Close to Transport

# Kingsland Road, London, E8



Total area (approx.): 48.0 sq. m (516.6 sq. ft)

Balcony area (approx.): 7.10 sq. m (76.4 sq. ft)