



 1

 1

 1

 C

DavidJames
the estate agent

Colbrook Place, Midland Road, Netherfield, Nottingham, NG4 2GH

£700 Per Month

About This Property

A first floor maisonette situated within walking distance of Netherfield train station and other local amenities. The property comprises an open plan living/kitchen area, one double bedroom and a bathroom/en-suite with white suite. Outside there is an allocated parking space and communal gardens.

TENANCY DETAILS

Available From: 29th April 2026

Furnishing: Unfurnished

EPC Rating: C

Council Band: A



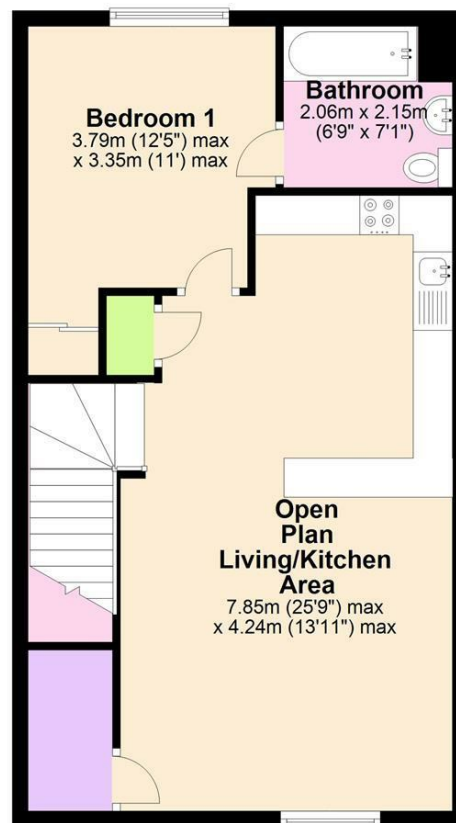
- Well presented first floor maisonette
- One double bedroom
- Open plan living/kitchen area
- Kitchen area with integrated appliances
- Bathroom/en-suite with white suite and mains shower
- UPVC double glazed windows
- Allocated parking
- Communal gardens
- Within walking distance of Netherfield train station





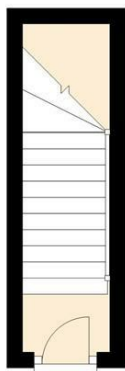
First Floor Maisonette

Approx. 54.6 sq. metres (587.3 sq. feet)

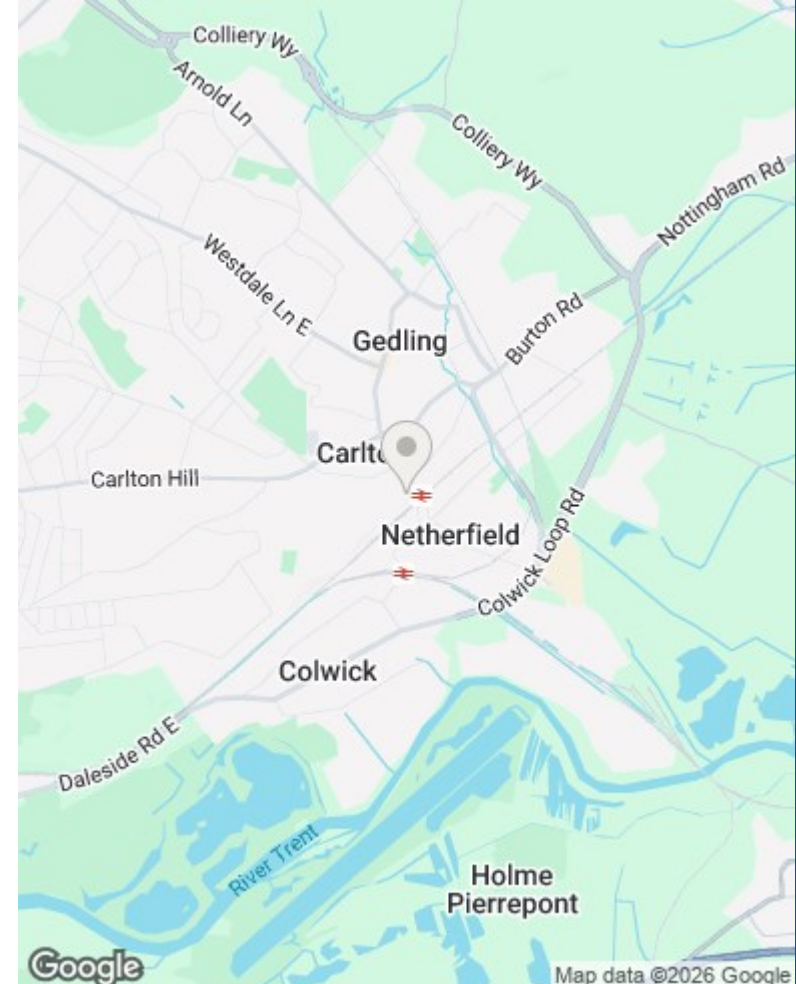


Ground Floor

Approx. 4.7 sq. metres (50.2 sq. feet)



Total area: approx. 59.2 sq. metres (637.5 sq. feet)



These particulars are produced in good faith, are set out as a general guide only and do not constitute any part of a contract. No person in the employment of David James Estate Agents Ltd has any authority to make any representation whatsoever in relation to the property. All services, together with electrical fittings or fitted appliances have NOT been tested. All the measurements given in the details are approximate. Floor plans are for illustrative purposes only and are not drawn to scale. The position and size of doors, windows, appliances and other features are approximate only. The photographs of this property have been taken with a 10mm wide-angle lens. No responsibility can be accepted for any loss or expense incurred in viewing. If you have a property to sell you may wish to take advantage of our free valuation service. David James Estate Agents have established professional relationships with third-party suppliers for the provision of services to Clients. As remuneration for this professional relationship, the agent receives referral commission from the third-party company. David James Estate Agents receives the following commission from each third party supplier on a per referral basis: W A Barnes Ltd: £60 including VAT. All Moves UK Ltd: 18% including VAT of the invoice total (£107 including VAT average). MoveWithUs Limited: £188 including VAT (average).

Council Tax Band: A
Gedling Borough Council

DavidJames
the estate agent

David James Estate Agents
45b Plains Road, Mapperley, Nottingham, NG3 5JU
t: 0115 962 4213 e: lettings@david-james.com

