

**OVER 60?**

Secure this property  
for up to **59% less!**



**Guide Price**  
**£325,000**  
**Freehold**

3x  1x  1x 

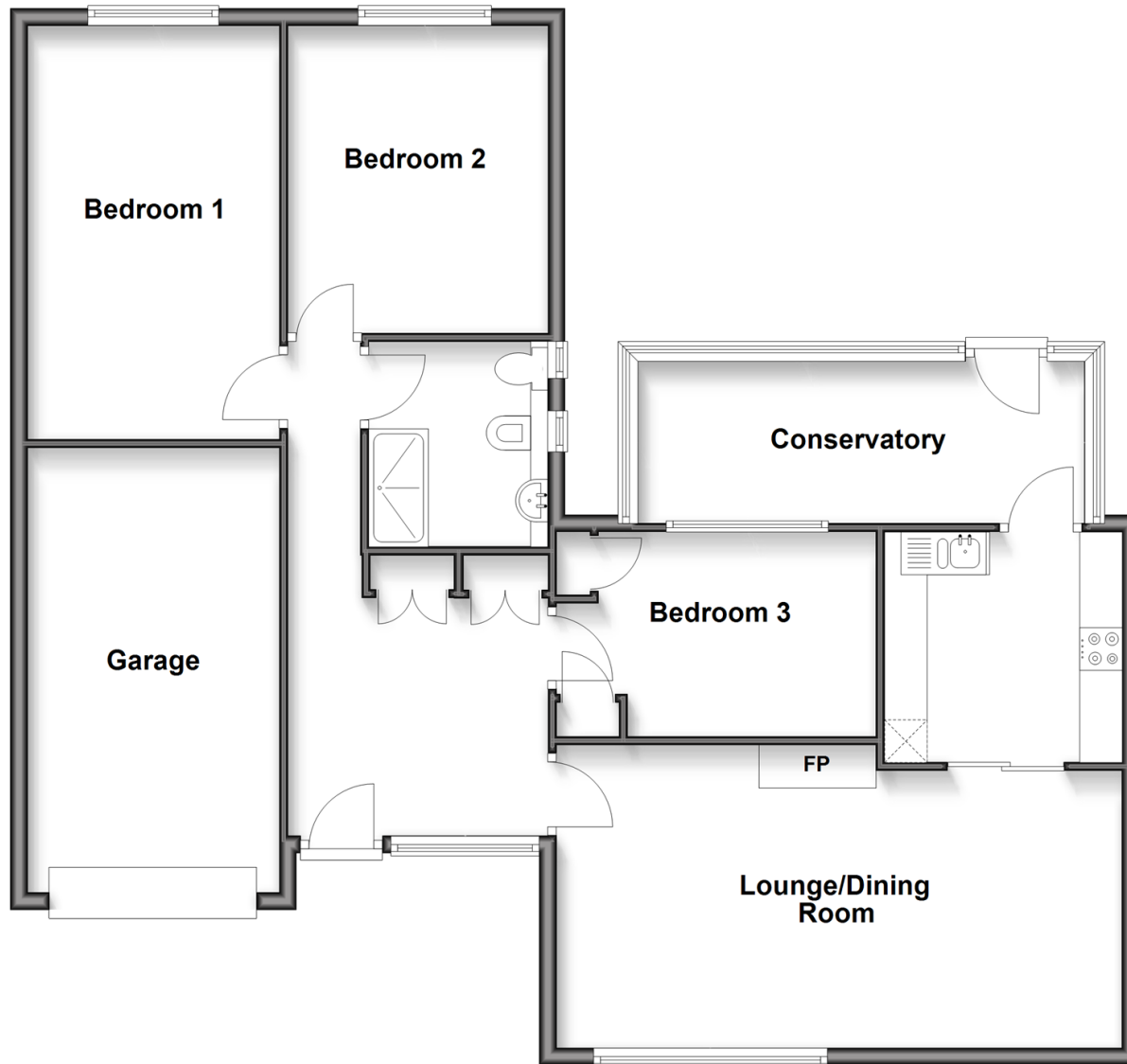
Chatsworth Avenue, Shanklin, Isle of  
Wight, PO37

**Pittis**   
Helping you move forwards



## Ground Floor

Approx. 111.1 sq. metres (1195.4 sq. feet)



## Accommodation

### GROUND FLOOR

Hallway

Study/Bedroom 3: 12'0 x 8'0 (3.66m x 2.44m)

Lounge/Dining Room: 21'8 x 10'9 (6.61m x 3.28m)

Kitchen: 9'0 x 8'10 (2.75m x 2.69m)

Conservatory: 16'6 x 6'5 (5.03m x 1.96m)

Shower Room

Bedroom 2: 11'9 x 9'10 (3.58m x 3.00m)

Bedroom 1: 15'10 x 9'2 (4.83m x 2.80m)

### OUTSIDE

Front & Rear Gardens

Workshop

Garage & Driveway: 17'6 x 9'3 (5.34m x 2.82m)



## Main features

- Detached executive bungalow in a highly sought after area of Shanklin
- Spacious lounge/dining room with conservatory to the rear
- Wonderful gardens with patio area and workshop/shed
- Integral garage and driveway parking for several cars
- Chain free sale



### Nearest Schools

The Bay CE School  
Shanklin C of E Primary Schools  
Gatten & Lake Primary School  
Shanklin Pre-School & Nursery  
Brading CE Primary School



### Transport Information

Local buses providing Island wide connections plus local train station with direct links to Ryde Pier Head.



### Address

Chatsworth Avenue, Shanklin, Isle of Wight, PO37



### Directions

For directions to this property please contact us.



