



Airlie Gardens, W8

£4,495 Per calendar month

This two bedroom property is located on the third floor (with lift) with views over one of the most sought after gardens in Kensington. With an open plan living room, private balcony, two double bedrooms and separate kitchen this property is ideal for a couple or young family looking for an ideally situated home in the city.

Airlie Gardens is in a highly desirable road between Notting Hill and Kensington High Street. The area has some fantastic shops, restaurants and popular bars. Holland Park and Notting Hill Gate tube station (Central, Circle & District Lines) are both within 0.4 of a mile.

Features

- Two Bedrooms
- Two Bathrooms
- Private Balcony
- Access to Communal Gardens
- Large Reception Room
- Views over Communal Gardens

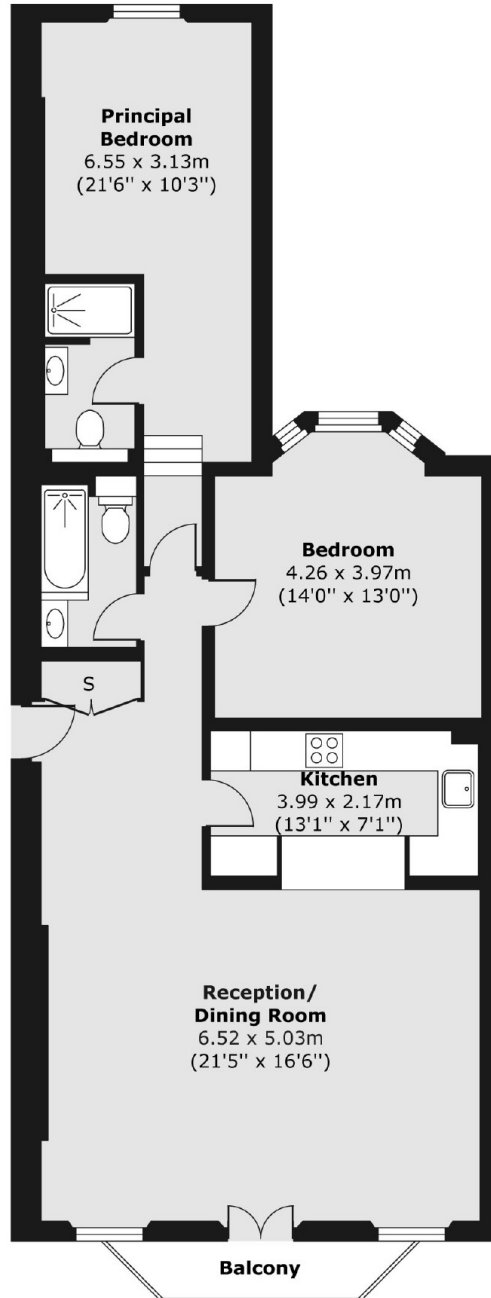


Airlie Gardens, W8



Airlie Gardens, London, W8

Third Floor



Total area (approx.) 95.37 sq. m (1,027 sq. ft)
Balcony area (approx.) 3.19 sq. m (34 sq. ft)