



St. Andrew's Square, KT6

£695,000

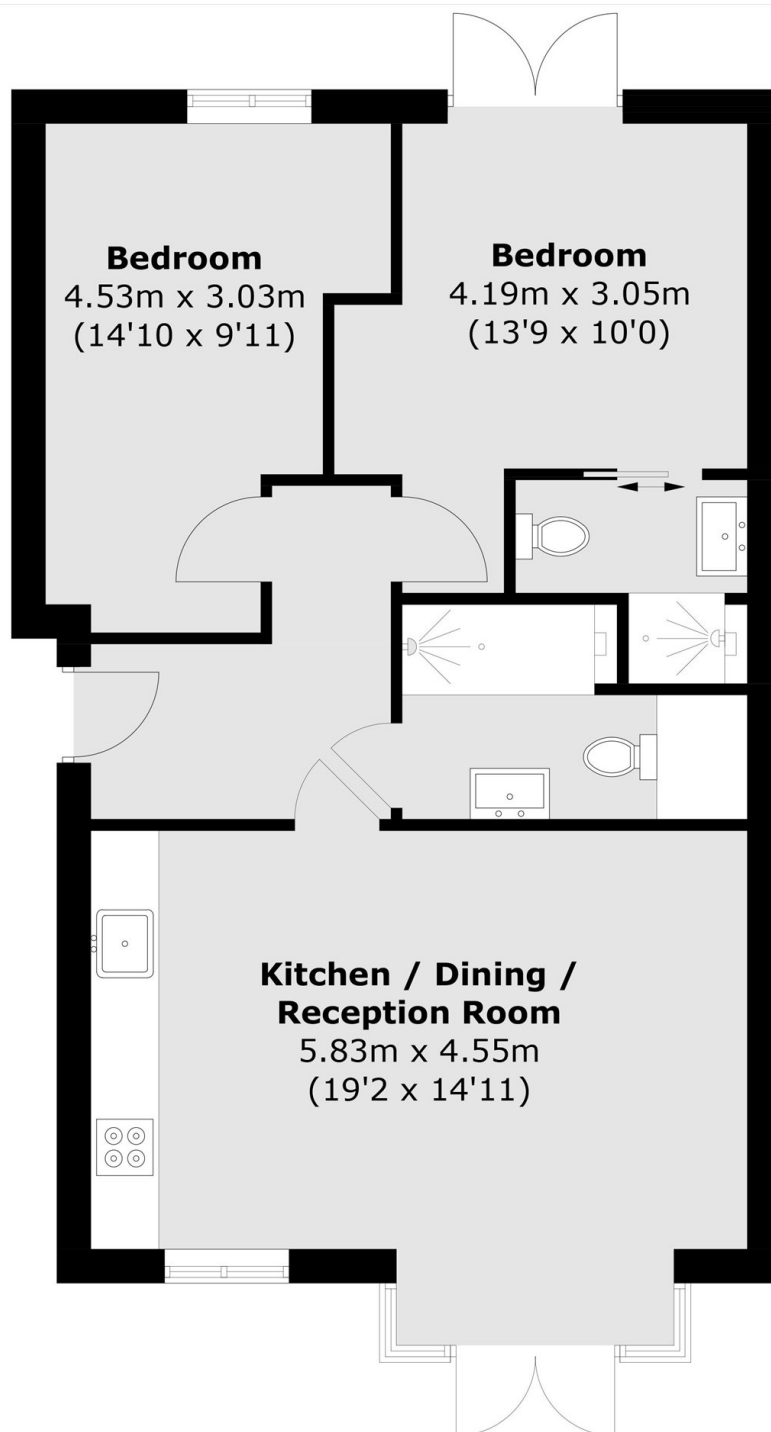
An beautifully presented two-bedroom, two-bathroom apartment, set within an elegant contemporary development on the prestigious St. Andrews Square. This exceptional apartment has two private gardens, offering indoor sophistication and outdoor serenity. Finished to an exacting standard throughout, the property features bespoke detailing, integrated premium appliances, luxury bathroom suites and allocated parking with EV charging.

Surbiton Court Mews is located in the centre of town on the beautiful St. Andrews Square, close to the river, the farmers market and all local amenities. Surbiton station is close by and well-connected to various destinations in and around London. It provides direct train services to central London, including London Waterloo in 15 minutes, which is a major transportation hub.

Features

Luxury Apartment
Two Bedrooms
Two Bathrooms
Two Terraces
Close to River Thames
Allocated Parking with EV

St. Andrew's Square, Surbiton, KT6



Total area (approx.): 61.25 sq. m (659.3 sq. ft)