



## Holland Park, W11

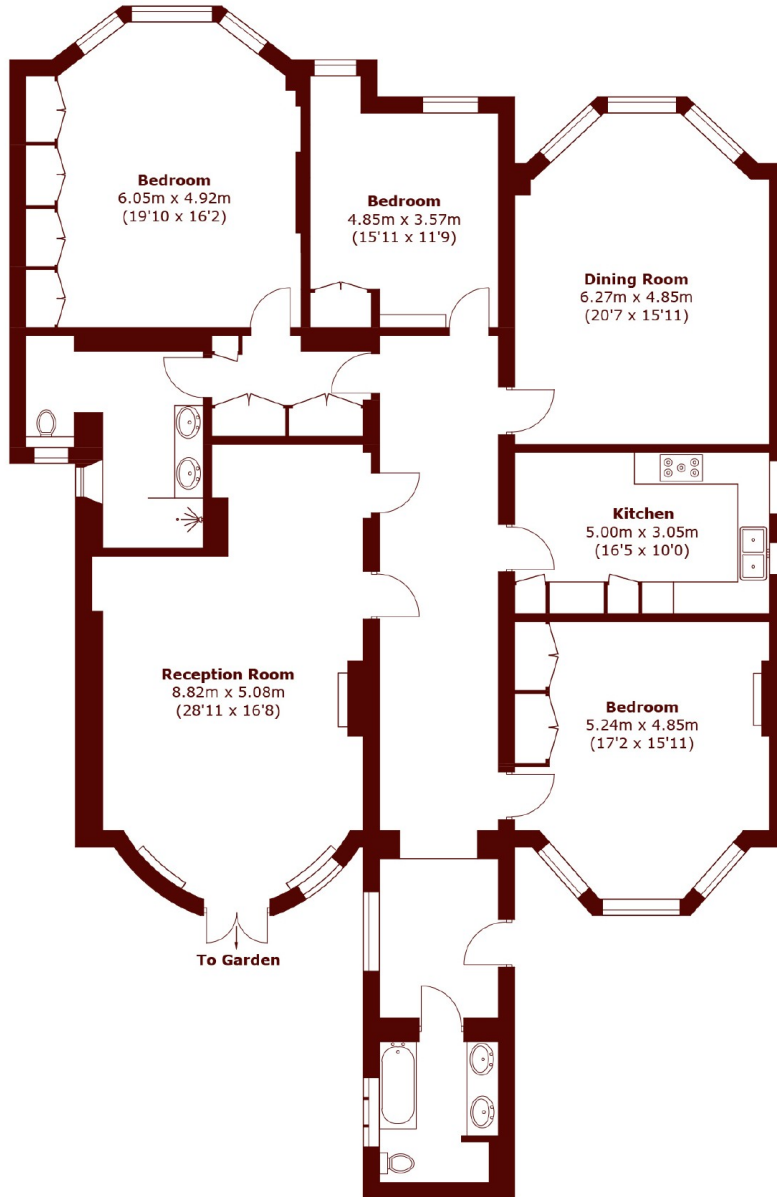
£2,500,000

 4  1  1  E

• Four Bedroom

• Wooden Flooring

• Private Patio



## Lower Ground Floor

Total area (approx.): 207.4 sq. m (2,232.4 sq. ft)

### Marsh & Parsons Holland Park

57 Norland Square, London,  
W11 4QJ  
020 7605 6890