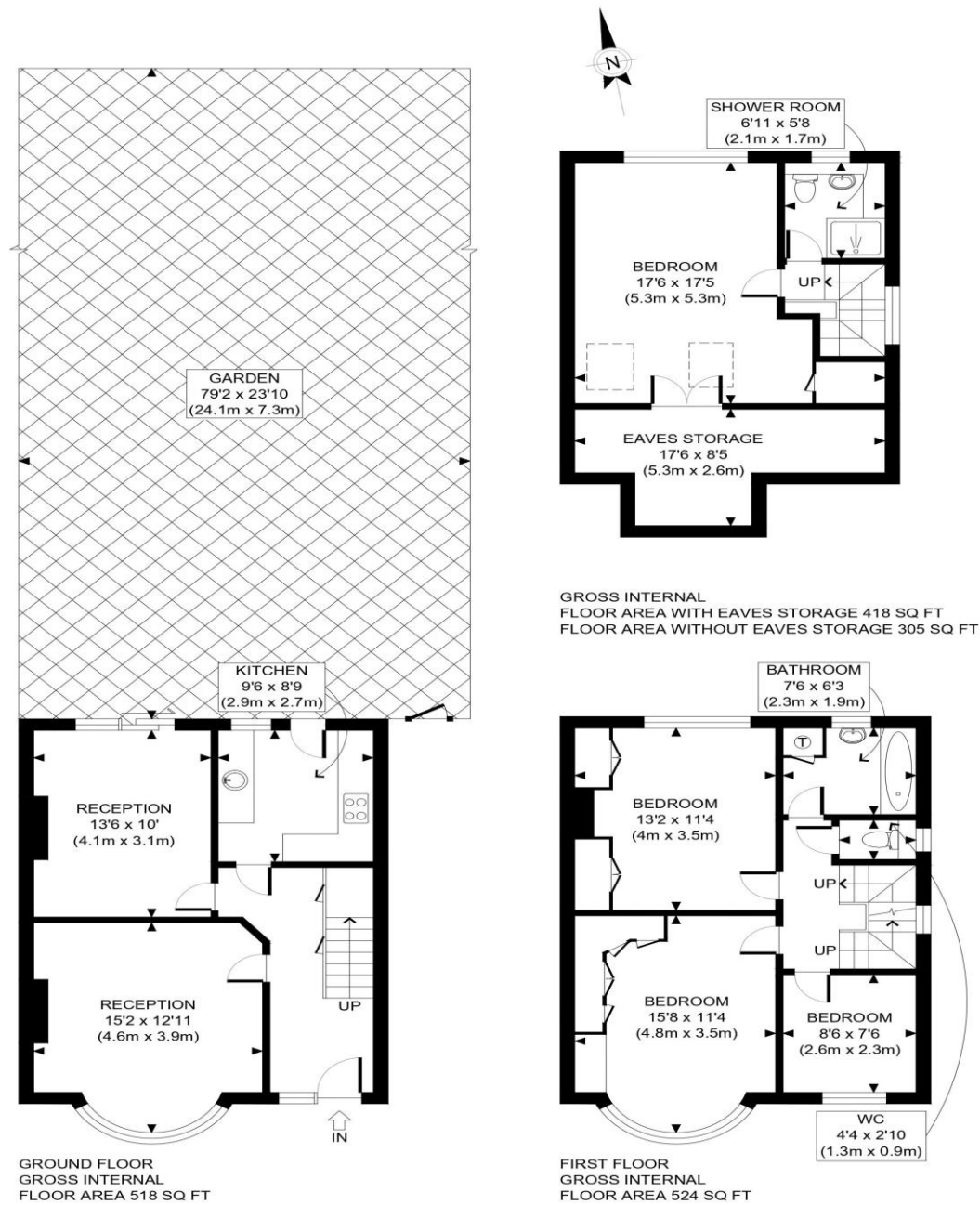


The Floorplan...



APPROX. GROSS INTERNAL FLOOR AREA WITH EAVES STORAGE: 1460 SQ FT/ 136 SQM
APPROX. GROSS INTERNAL FLOOR AREA WITHOUT EAVES STORAGE: 1347 SQ FT/ 125 SQM

This plan is for illustrative purposes only and should be used as such by any prospective client. Whilst every attempt has been made to ensure the accuracy of the Floor Plan contained here, measurements of the doors, windows, rooms and any other items are approximate and no responsibility is taken for any errors, omissions, or misstatement. The services, systems and appliances shown have not been tested and no guarantee as to the operability or efficiency can be given.

PROPERTY PHOTO PLANS
ONE STOP SHOP FOR PROPERTY MARKETING

More Details From...

Call: **Brian Cox North Harrow: 020 3866 6640**

Email: nhadmin@brian-cox.co.uk

Web: www.brian-cox.co.uk



0203 866 6640
brian-cox.co.uk



This spacious four bedroom, two bathroom semi detached property enters the market with Brian Cox Estate Agents. The property is situated close to shopping facilities, sought after schools and transport facilities. Accommodation: Entrance hallway, lounge, dining room, fitted kitchen, three bedrooms and family bathroom with separate wc. To the second floor is a spacious fourth bedroom and en suite shower room. Further benefits include gas central heating, double glazing, own drive and a delightful 80 ft rear garden. The property has the benefit of no upper chain.



£685,000

Freehold

Northumberland Road, North Harrow

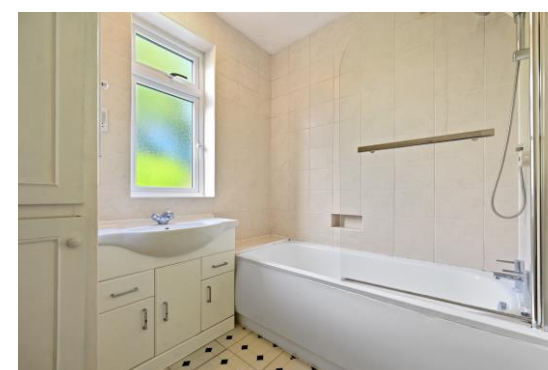
HA2 7RA

Consumer Protection from Unfair Trading Regulations 2008 We have not tested any apparatus, equipment, fixtures, fittings or services and so cannot verify that they are in working order or fit for purpose. You are advised to obtain verification from your solicitor or surveyor. References to the tenure of a property are based on information supplied by the seller. We have not had sight of the title documents and a buyer is advised to obtain verification from their solicitor. Items shown in photographs are not included unless specifically mentioned within the sales particulars, but may be available by separate negotiation. We advise you to book an appointment to view before embarking on any journey to see a property, and check its availability.



In Brief...

- Four Bedrooms
- Two Bathrooms
- In Need of Modernisation
- Own Drive
- Sought After Schools
- Close to Met Line
- No Upper Chain



The Location...

Nearest Stations ...

- North Harrow (0.1 miles)
- West Harrow (0.6 miles)
- Rayners Lane (0.7 miles)

North Harrow is a suburban area of North West London, situated North West of central Harrow within the London Borough of Harrow. North Harrow Train Station is a London Underground Station situated in North Harrow in North West London. The station is on the Metropolitan Line between Harrow-on-the-Hill (southbound) and Pinner (northbound). The area is served well by local amenities including a post office, Tesco Express, a selection of restaurants, take-aways & cafés and independent specialist shops. There are several schools and churches in the area. There are many local schools in the area some include Longfield Primary School, St John Fisher Catholic Primary School, Vaughan Primary School and Grange Primary School which all have a good of higher Ofsted report.