



**18 Maitland Close, Chippenham, SN15 3UD**

**£249,950**

**\*\*\*NEWLY DECORATED\*\*\* \*\*\*RE FITTED CARPETS\*\*\* \*\*\*REFURBISHED KITCHEN\*\*\*  
**\*\*\*GARAGE & LARGE DRIVEWAY\*\*\*** Located on the popular development of Pewsham, a well presented two bedroom semi detached house in a cul de sac position. To the rear there is an enclosed garden and to the front a good size driveway and garage. The property features a conservatory and benefits from double glazing and gas central heating. NO ONWARD CHAIN.**

### **Porch**

Front door leads into porch, double glazed window, tiled floor.

### **Entrance Hallway**



Staircase to first floor, under stairs cupboard., radiator.

### **Living Room 13'09" x 11'11" (4.19m x 3.63m)**



Double glazed window, radiator, door to conservatory.

### **Conservatory 10'04" x 8'06" (3.15m x 2.59m)**



Double glazed doors to garden.

### **Re Furbished Kitchen 11'0" x 5'10" (3.35m x 1.78m)**



Two double glazed windows, work tops with a range of cupboards and drawers, inset sink unit, inset electric hob, cooker hood, fitted oven, plumbing and space for washing machine, space for fridge/freezer, wall mounted gas boiler, radiator.

### **Landing**

Doors to bedrooms and bathroom, access to loft.

### **Bedroom One 11'10" x 9'0" (3.61m x 2.74m)**



Double glazed window, radiator.

### **Bedroom Two 9'02" x 8'08" (2.79m x 2.64m)**



Two double glazed windows, radiator, over stairs cupboard, radiator.

### **Bathroom**



Double glazed window, bath with mixer/spray shower, hand basin with cupboards under, W.C, radiator.

### **Outside**

#### **Rear**



To the rear there is an enclosed garden with patio.

#### **Front**

Large driveway providing off road parking for several cars and access to the garage.

#### **Garage**

Single Garage.

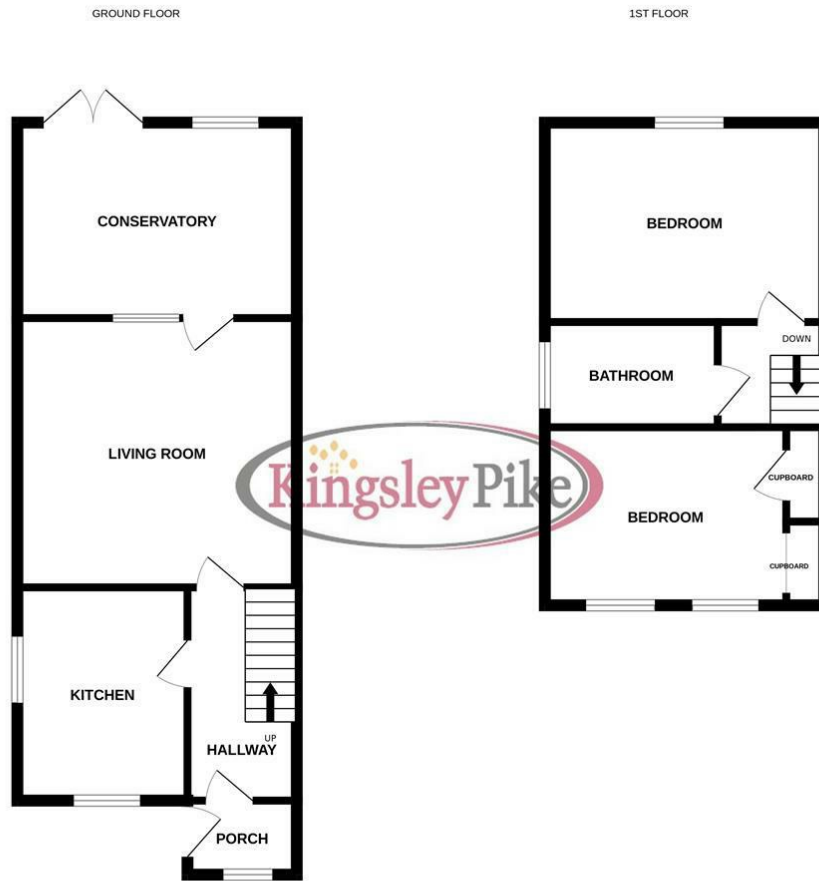
#### **Tenure**

GOV.UK advise Freehold.

#### **Council Tax band**

GOV.UK advise Band B.

# Floor Plan

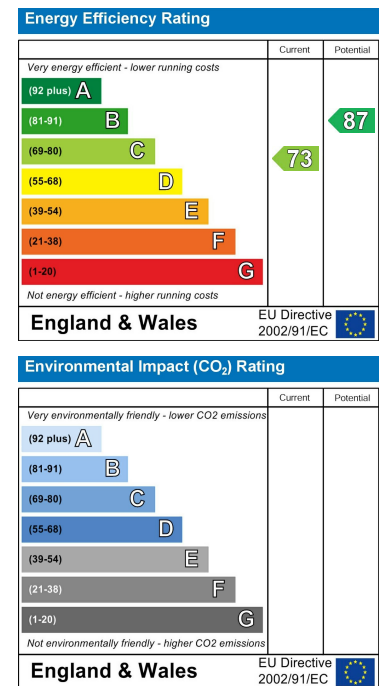


Whilst every attempt has been made to ensure the accuracy of the floorplan contained here, measurements of doors, windows, rooms and any other items are approximate and no responsibility is taken for any error, omission or mis-statement. This plan is for illustrative purposes only and should be used as such by any prospective purchaser. The services, systems and appliances shown have not been tested and no guarantee as to their operability or efficiency can be given. Made with Metropix 10/2026

# Area Map



# Energy Efficiency Graph



These particulars, whilst believed to be accurate are set out as a general outline only for guidance and do not constitute any part of an offer or contract. Intending purchasers should not rely on them as statements of representation of fact, but must satisfy themselves by inspection or otherwise as to their accuracy. No person in this firm's employment has the authority to make or give any representation or warranty in respect of the property.