



Jenkinson Lane, Ellesmere Port, CH65

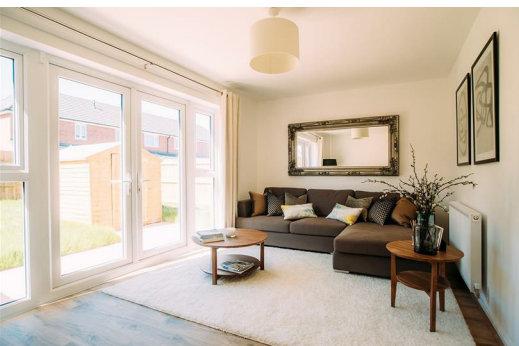
£1,195 PCM

Located in Ellesmere Port, Cromwell Road is an impressive new development of 98 desirable family homes, 6 miles from Chester town centre. Cromwell Road offers a wide range of amenities and transport links, making it the perfect location for families and couples.

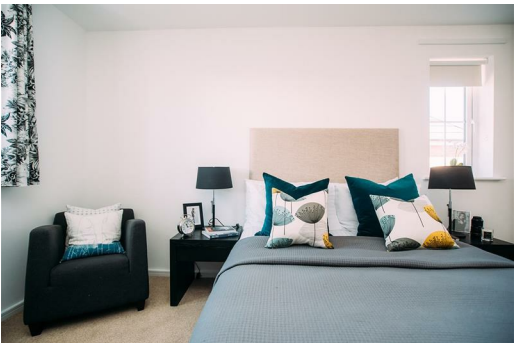
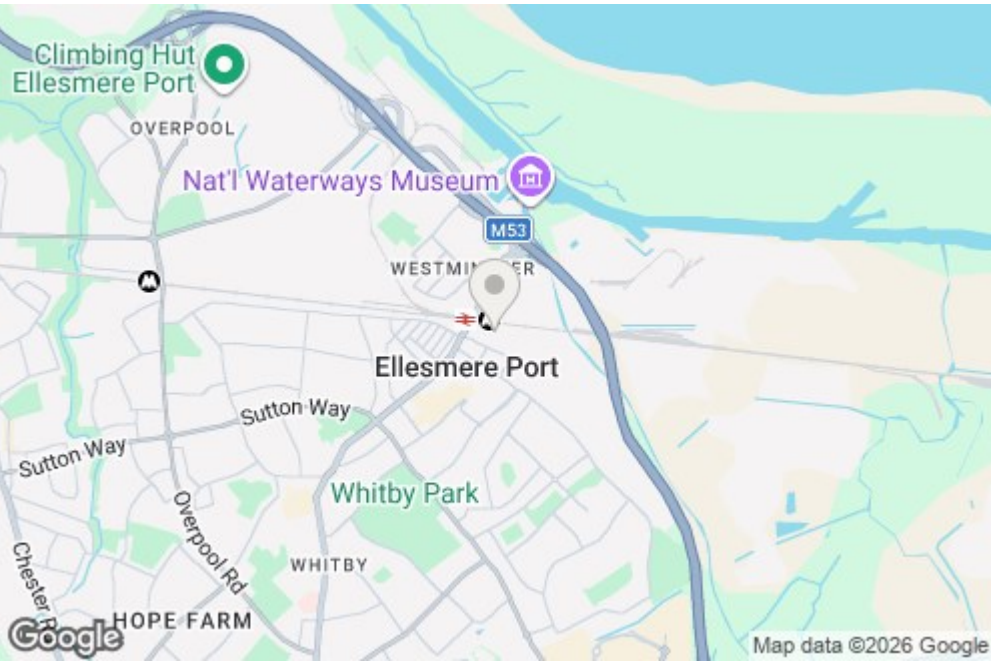
The beautifully designed Weaver makes a wonderful family home or a spacious haven for couples. The front door leads you straight into the hallway with a WC to one side. Further on is the contemporary open-plan kitchen and dining area. Beyond this is the comfortable living room with plenty of space and fabulous French windows that open out onto the garden. Great news if you enjoy al fresco dining and entertaining.

Upstairs you'll find a generously sized master bedroom, a double bedroom and a single bedroom. The family sized bathroom features a separate bath and shower. Modern and energy-efficient, the Weaver is built to high standards with beautiful flooring throughout, with fitted alarm systems for extra security and peace of mind.

Deposit: £1370
Unfurnished
Council Tax: B
Available 18th June 2026



20 Jenkinson Lane, Ellesmere Port, Cheshire, CH65 4BR



Energy Efficiency Rating		Environmental Impact (CO ₂) Rating	
Current	Potential	Current	Potential
84	96	87	93
<p>100-96: A</p> <p>95-91: B</p> <p>85-81: C</p> <p>75-71: D</p> <p>65-61: E</p> <p>55-51: F</p> <p>45-41: G</p>		<p>100-90: A</p> <p>85-75: B</p> <p>70-60: C</p> <p>55-45: D</p> <p>40-30: E</p> <p>25-15: F</p> <p>10-0: G</p>	

Ascend
Built on higher standards