



ROEDEAN CRESCENT, SW15

£3,250,000

Detached
Five bedrooms
Significant potential to extend
South west facing garden
Private driveway
Energy rating: d

@marshandparsons
marshandparsons.co.uk

MARSH &
PARSONS



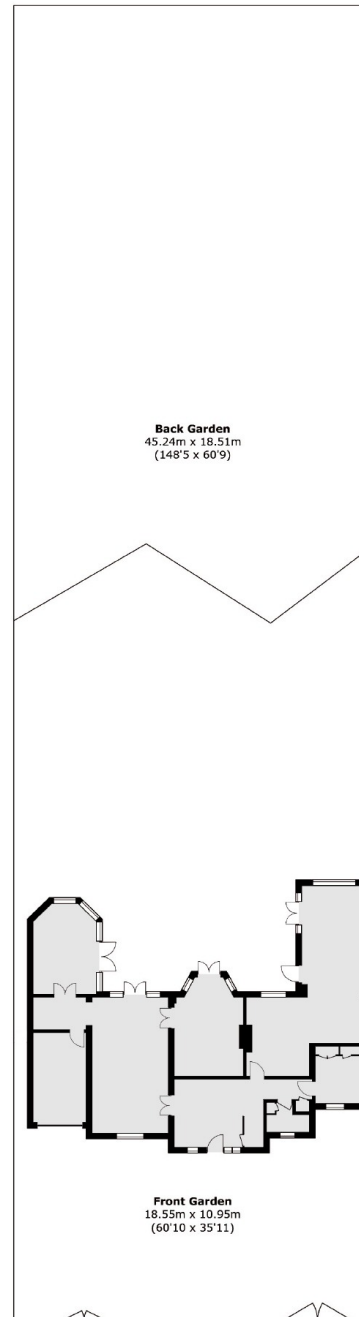
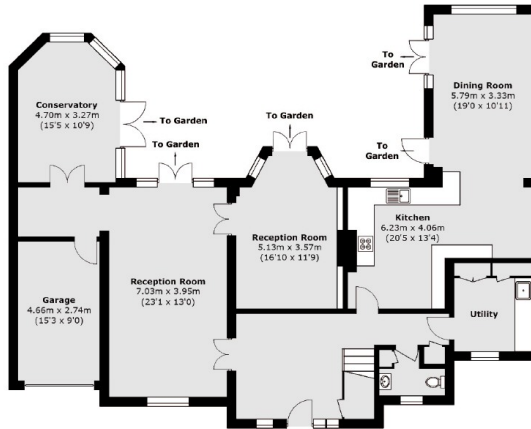
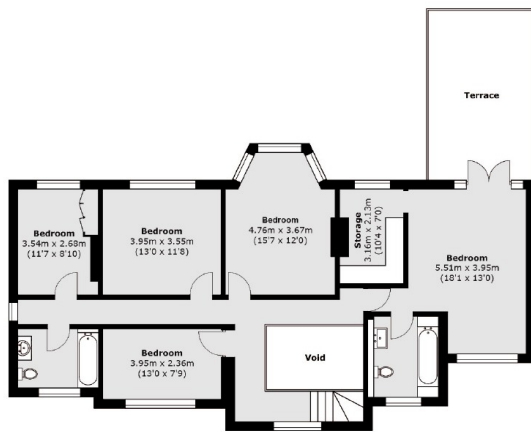
ABOUT THE PROPERTY

An exceptional opportunity to demolish and rebuild. Currently this detached home sits on an exclusive road near the entrance of Roehampton Gate, Richmond Park. A gated carriage driveway offers ample private parking and garage access. Inside, a grand entrance hall with high ceilings leads to four bright reception rooms, ideal for family living and entertaining. The stylish eat-in kitchen features quality appliances, and most rooms overlook a stunning, private 162 ft south-west facing garden. Additional features include a conservatory, utility room, and guest cloakroom.

Roedean Crescent is a prestigious address near Richmond Park, with easy access to Central London via Barnes



STEP INSIDE ROEDEAN CRESCENT



SITE PLAN
(Not To Scale)

Total area (approx.): 268.2 sq. m (2,886.9 sq. ft)
Terrace: 20.0 sq. m (215.3 sq. ft)
(Including Garage / Excluding Void)

Barnes & East Sheen
020 8563 8333

Energy Rating: D We aim to make our particulars both accurate and reliable. However, they are not guaranteed; nor do they form part of an offer or contract. If you require clarification on any points then please contact us, especially if you're traveling some distance to view. Please note that appliances and heating systems have not been tested and therefore no warranties can be given as to their good working order

MARSH & PARSONS