



HW

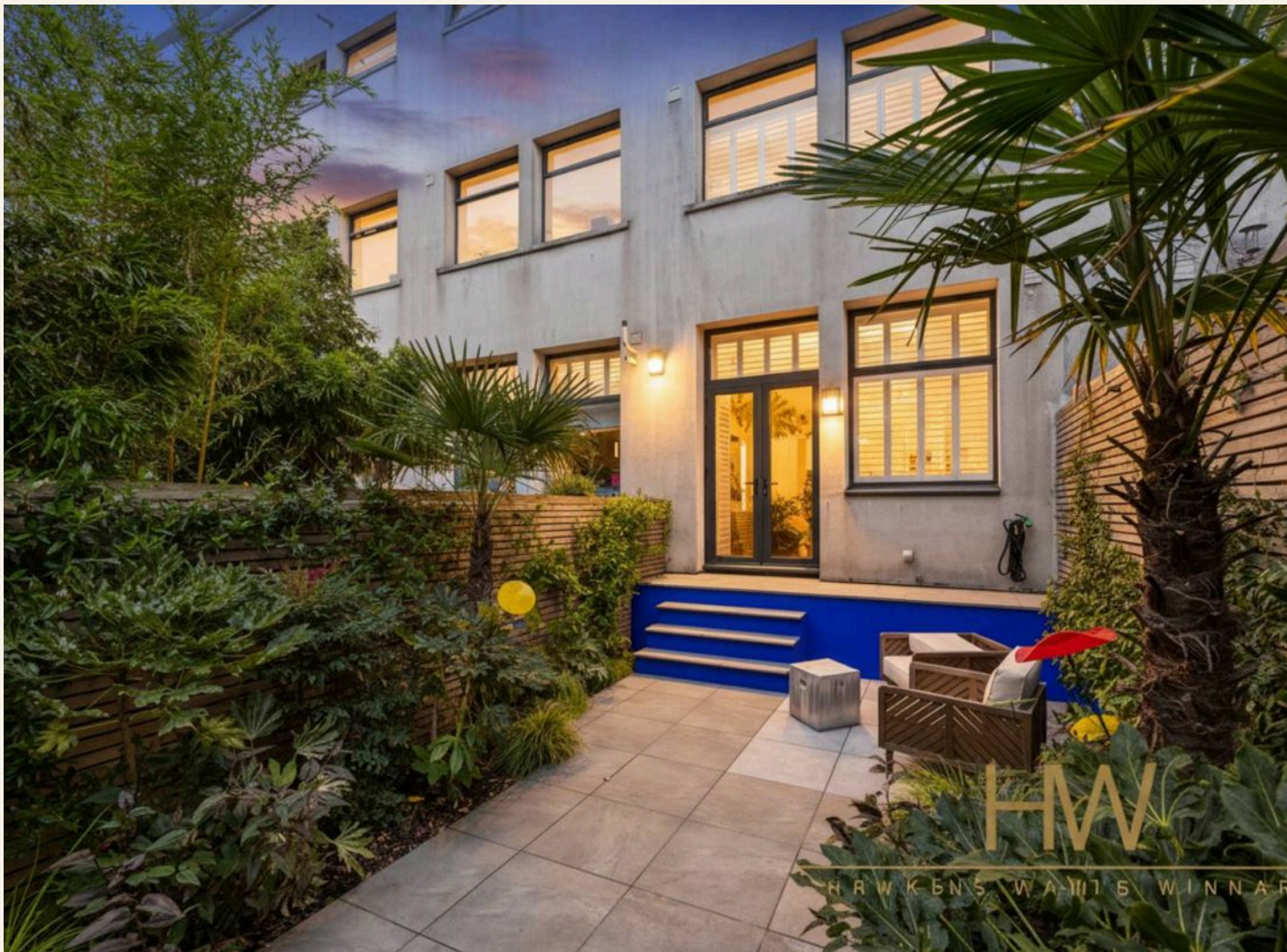
HAWKENS WAITE WINNARD

HW

ESTATE AGENTS

Unit 2, 80 Stoneham Road, Hove

£950,000



## Unit 2, 80 Stoneham Road

Hove

This exceptional four-storey townhouse forms part of the celebrated conversion of the old Maynards Sweet Factory. Originally constructed around 1900, this striking red-brick industrial building was converted in 2002 into just seven bespoke homes

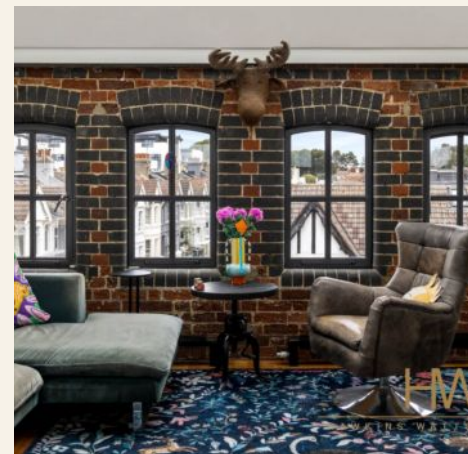
Council Tax band: F

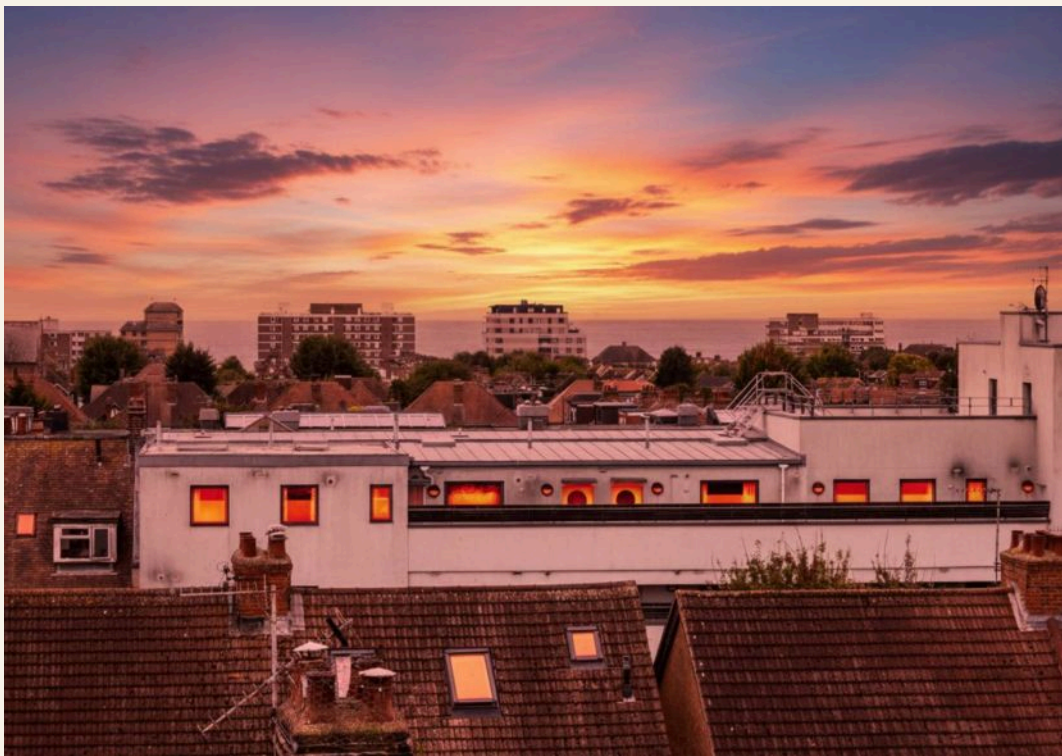
Tenure: Leasehold

EPC Energy Efficiency Rating: D

EPC Environmental Impact Rating:

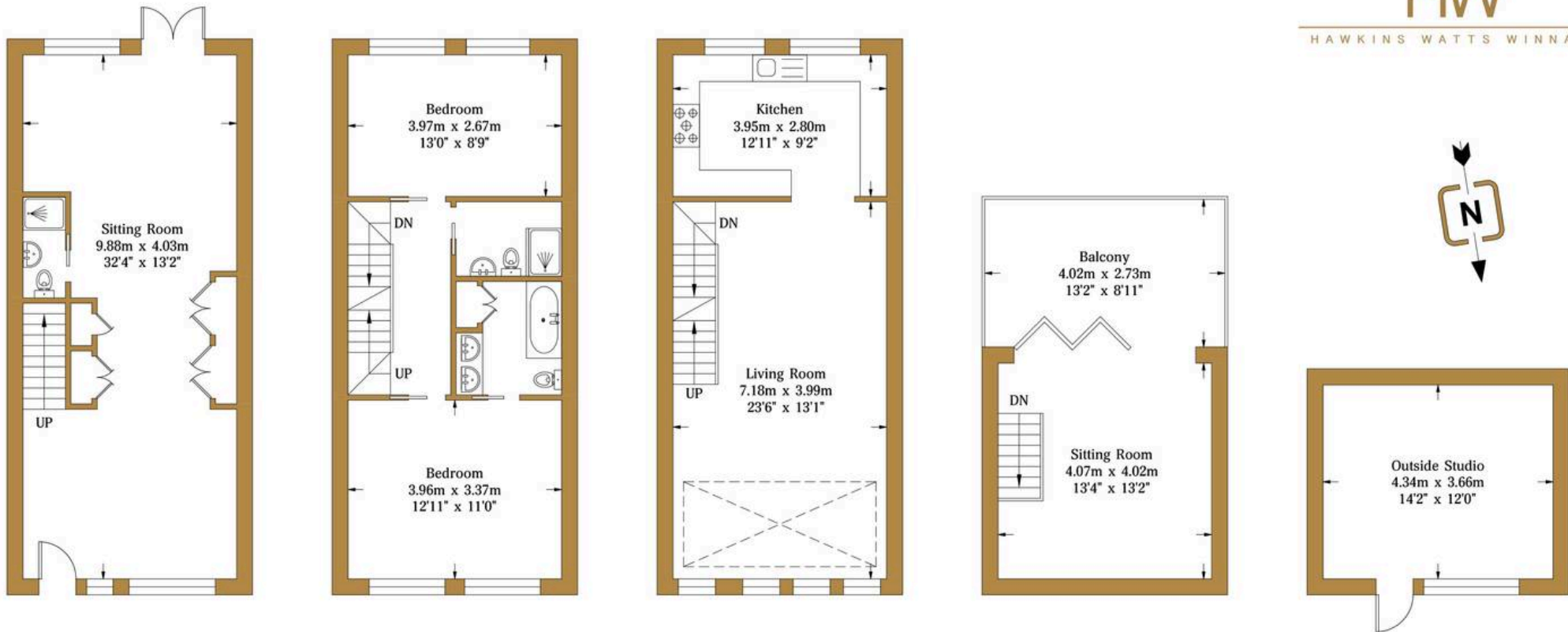
- Four-storey industrial-style townhouse
- Historic Maynards Factory Conversion
- Exposed brick and high ceilings
- Roof terrace with sea views
- Landscaped garden with garden studio
- Share of freehold included
- Sought-after Poets Corner location
- Close to seafront and park
- Lease 999 Years from 29/09/2002





# Stoneham Road

Approx. Gross Internal Area (Excluding Outbuilding):- 135.86 sq.m. 1462.39 sq.ft.



Ground Floor  
Approximate Floor Area  
428.62 sq ft  
(39.82 sq m)

First Floor  
Approximate Floor Area  
428.62 sq ft  
(39.82 sq m)

Second Floor  
Approximate Floor Area  
428.62 sq ft  
(39.82 sq m)

Third Floor  
Approximate Floor Area  
176.53 sq ft  
(16.40 sq m)

Outside Studio  
Approximate Floor Area  
170.93 sq ft  
(15.88 sq m)

Illustration for identification purposes only, measurements are approximate, not to scale.

© hwestateagents



## HW Estate Agents

HW Estate Agents, 80 Goldstone Villas, Hove - BN3 3RU

01273 359000 · [hove@hwestateagents.co.uk](mailto:hove@hwestateagents.co.uk) · [www.hwestateagents.co.uk](http://www.hwestateagents.co.uk)

HW

ESTATE AGENTS