



**Connells**

Trent Park The Chaplin Collection, Trent Park  
Barnet



## Property Description

113 Gloucester of The Chaplin Collection at Trent Park, is an exceptional five bedroom semi detached family home offering an outstanding blend of space, style and modern comfort. Newly built and ready to move into, it spans three light filled floors with thoughtfully designed interiors throughout.

The ground floor features a generous kitchen, dining and family area, complete with integrated appliances, central island and adjoining utility room, with double doors leading to a landscaped private garden. Across the hall, a further reception room offers flexibility for dining or a relaxed sitting space, while a guest WC completes the layout.

On the first floor, a beautifully proportioned formal living room creates a tranquil retreat. The principal suite includes a dressing area and luxurious en suite bathroom, while a study or fifth bedroom provides an ideal home office or guest room.

The top floor hosts three additional double bedrooms, two with en suites, offering flexibility and comfort for family or visitors. High quality finishes include bespoke wardrobes, underfloor heating and herringbone tiled bathrooms, all reflecting the craftsmanship synonymous with Berkeley Homes.

Situated close to the historic stable block and moments from the Long Garden and Daffodil Lawn, this home offers a rare opportunity to

enjoy refined countryside living within a setting that combines heritage, nature and contemporary sophistication, just 26 minutes from King's Cross by Tube.

## Development Overview

Welcome to Trent Park a gated country estate surrounded by 413 acres of glorious parkland in North London. Once a royal hunting ground, this historic setting has been transformed by Berkeley Homes into an exclusive community of elegant new homes surrounded by nature, heritage and tranquillity. All just 26 minutes from King's Cross. Every detail reflects Berkeley's hallmark quality and heritage craftsmanship, delivering timeless elegance, space and serenity.

## Excusive Residents Facilities

Homeowners enjoy access to the Lawn Club, offering a fully equipped gym in the restored orangery, four outdoor tennis courts and a heated outdoor swimming pool. A private shuttle bus runs every 30 minutes to Oakwood Underground Station (Piccadilly Line), ensuring effortless connections into Central London.

## Parkland & Heritage

The estate's 56 acres include woodlands, lakes and landscaped gardens such as the famous beautiful Daffodil Lawn, Japanese Garden and Wisteria Walk, creating a peaceful retreat steeped in history and natural

beauty.

is not intended to form part of any contract or warranty unless specifically incorporated in writing into the contract.

## Location & Lifestyle

Nearby Cockfosters and Hadley Wood offer boutique shops, cafés and restaurants, while leisure options include Trent Park Golf Club, an Equestrian Centre, and Go Ape Adventure Park, all within or adjacent to the estate grounds. The surrounding parkland provides beautiful walking trails, cycling routes and open green spaces, creating the perfect setting for relaxation and recreation.

Local attractions such as the Royal Air Force Museum, Alexandra Palace and Forty Hall Estate are just a short drive away. With highly regarded schools and excellent transport links, Trent Park provides the ideal balance of countryside living and London convenience.

## Disclaimer

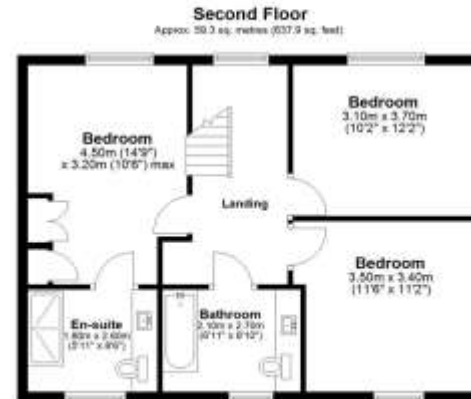
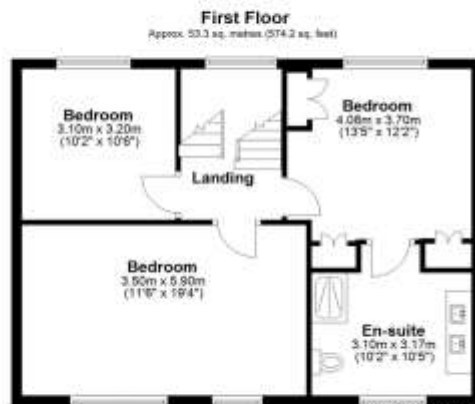
These particulars are compiled with care to give a fair description, but we cannot guarantee their accuracy and they do not constitute an offer or contract.

The specification is the anticipated specification but may be subject to change as necessary and without notice. The developer reserves the right to change specifications, designs, floor plans and site plans at any time. Room dimensions are subject to change and should not be used when ordering floor coverings or furnishings. Any photographs or computer-generated images are indicative of the quality and style of the specification and may not represent the actual fittings and furnishings at the development. Specification









Total area: approx. 170.9 sq. metres (1839.2 sq. feet)

All measurements have been taken as a guide to prospective buyers only and are not precise. This plan is for illustrative purposes only and no responsibility for any error, omission or misstatement. The services, systems and apparatus shown have not been tested and no guarantee as to their operability or efficiency can be given. Measurements may have been taken from the widest area and may include unobstructed space. For guidance is given to any measurements including total area. Buyers are advised to see their own measurements.

© @modulobout | www.modulobout.co.uk  
Plan produced using PlanIt

Gloucester

To view this property please contact Connells on

**T 01727 856 781**  
**E stalbans@connells.co.uk**

38 Chequer Street  
ST. ALBANS AL1 3YH

EPC Rating:  
Exempt

Tenure: Freehold

**view this property online [connells.co.uk/Property/STA317536](http://connells.co.uk/Property/STA317536)**



1. MONEY LAUNDERING REGULATIONS Intending purchasers will be asked to produce identification documentation at a later stage and we would ask for your co-operation in order that there will be no delay in agreeing the sale. 2. These particulars do not constitute part or all of an offer or contract. 3. The measurements indicated are supplied for guidance only and as such must be considered incorrect. Potential buyers are advised to recheck measurements before committing to any expense. 4. We have not tested any apparatus, equipment, fixtures, fittings or services and it is in the buyers interest to check the working condition of any appliances.

Connells Residential is registered in England and Wales under company number 1489613, Registered Office is Cumbria House, 16-20 Hockliffe Street, Leighton Buzzard, Bedfordshire, LU7 1GN. VAT Registration Number is 500 2481 05.

**See all our properties at [www.connells.co.uk](http://www.connells.co.uk) | [www.rightmove.co.uk](http://www.rightmove.co.uk) | [www.zoopla.co.uk](http://www.zoopla.co.uk)**

Property Ref: STA317536 - 0002