



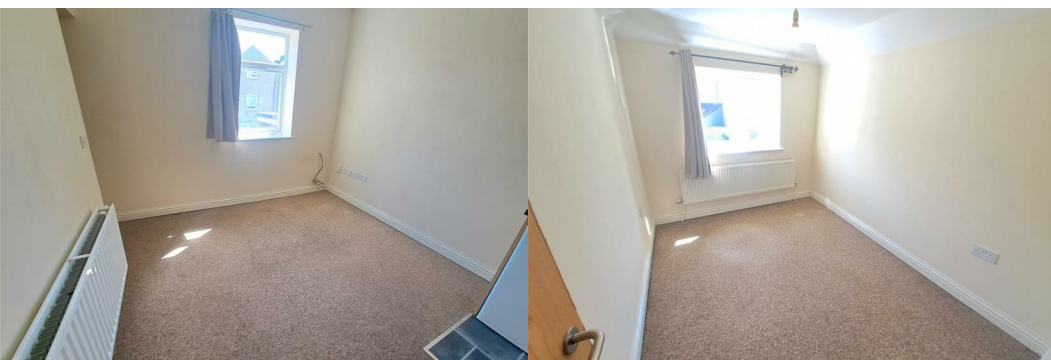
485b Stapleton Road

Easton, Bristol, BS5 6PQ

£850 Per Calendar Month



PLEASE READ DO NOT PHONE If you are interested in viewing this property please send us an alert through Rightmove / Zoopla using the Email Agent/request details option on their site. We will then respond with a brief questionnaire. On receipt, we will then contact you. VIEWINGS START TUESDAY 23RD JUNE 12 NOON TILL 1PM*** First Floor Apartment Within Easy Access Of Bristol*** , No Smokers, Accommodation Comprising Entrance Hall, Lounge Kitchenette Space For A Fridge Space For A Washing Machine , Bedroom And Shower Room, Available Early August.



Entrance Hallway

Lounge Kitchenette 14'0" x 10'4" (4.26 x 3.16)

Window overlooking the rear, radiator, power points, selection of wall and base units with work surfaces over, four ring gas hob oven and extractor hood, single drainer stainless steel sink unit with tiled splash backs, fridge and washing machine.

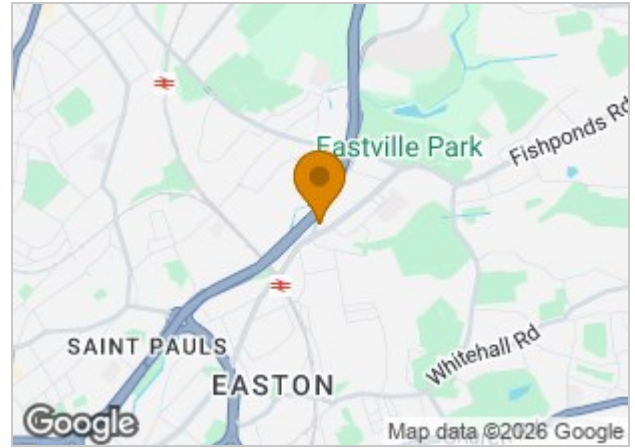
Bedroom 7'8" x 9'3" (2.34 x 2.83)

Window overlooking the rear, radiator, power points.

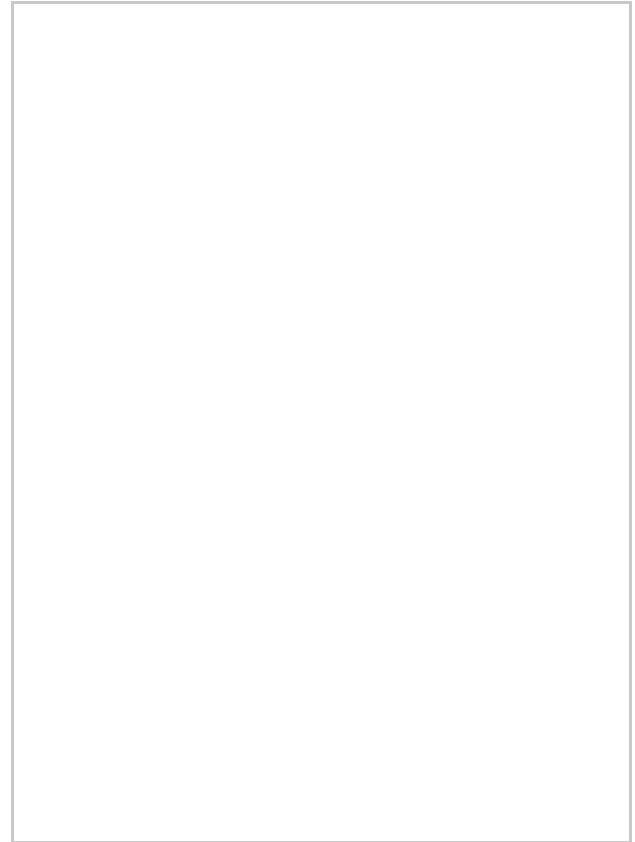
Shower Room

Wash hand basin, WC, shower cubicle with tiled splash backs, radiator.

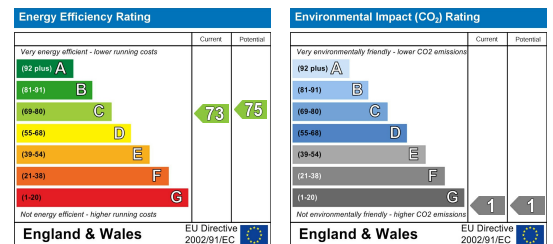
Area Map



Floor Plans



Energy Efficiency Graph



These particulars, whilst believed to be accurate are set out as a general outline only for guidance and do not constitute any part of an offer or contract. Intending purchasers should not rely on them as statements of representation of fact, but must satisfy themselves by inspection or otherwise as to their accuracy. No person in this firm's employment has the authority to make or give any representation or warranty in respect of the property.