

Haycock Gardens, Clifton, Shefford, SG17

Offers Over £750,000

4 3 3



This fabulous family home was built just a few years ago, on a fieldside development on the edge of Clifton. It has superb living space, four double bedrooms, plus a south-facing garden, a double garage and a two-car driveway.

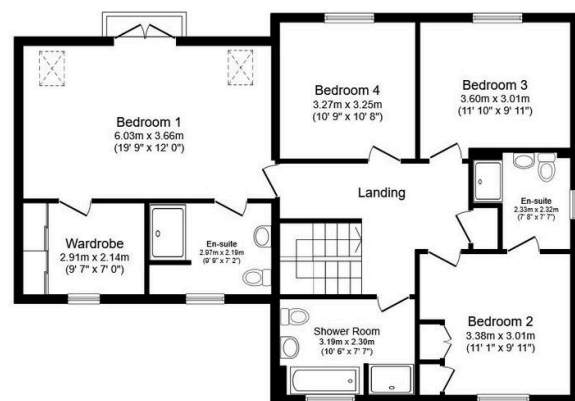
Key Features

- MUST SEE VIDEO TOUR
- Open-plan kitchen/dining room
- Four double bedrooms, two en suites
- Double garage, two-car driveway
- Village location with local amenities
- Stylish and high-specification
- Separate lounge, office and utility
- Good-sized south-facing garden
- Fieldside development of 95 properties
- Short drive to town centres and stations



Ground Floor

Floor area 101.1 sq.m. (1,089 sq.ft.)



First Floor

Floor area 98.4 sq.m. (1,059 sq.ft.)

Total floor area: 199.5 sq.m. (2,148 sq.ft.)

This floor plan is for illustrative purposes only. It is not drawn to scale. Any measurements, floor areas (including any total floor area), openings and orientations are approximate. No details are guaranteed, they cannot be relied upon for any purpose and do not form any part of any agreement. No liability is taken for any error, omission or misstatement. A party must rely upon its own inspection(s). Powered by www.Propertybox.io