

14 Goldsmith Close, Bridgend

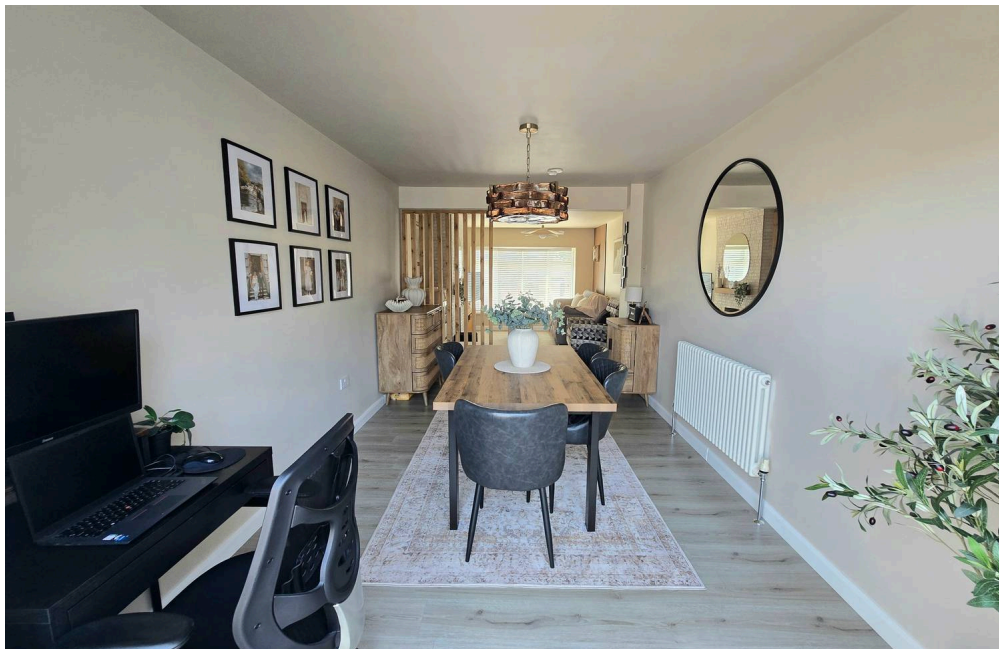
£230,000 Freehold

BEAUTIFULLY PRESENTED TWO BEDROOM SEMI DETACHED BUNGALOW • TWO BEDROOMS • LOUNGE AND DINING ROOM (DINING ROOM PREVIOUSLY A BEDROOM) • KITCHEN TO THE FRONT • LANDSCAPED GARDEN FRONT AND BACK • VERSATILE PURPOSE BUILT SUMMER ROOM/GYM/OFFICE AND SEPERATE STORAGE AREA • LOCATED IN A CUL DE SAC IN THE POPULAR LOCATION OF CEFN GLAS • VERSATILE AND BEAUTIFULLY PRESENTED PROPERTY IS A MUST TO VIEW • THIS BEAUTIFUL PROPERTY COMES WITH FULL PLANNING FOR A DOUBLE DORMER LOFT CONVERSION TO CREATE THREE ADDITIONAL BEDROOMS AND A FAMILY BATHROOM.

DanielMatthew
ESTATE AGENTS



- BEAUTIFULLY PRESENTED TWO BEDROOM SEMI DETACHED BUNGALOW
- TWO BEDROOMS
- LOUNGE AND DINING ROOM (DINING ROOM PREVIOUSLY A BEDROOM)
- KITCHEN TO THE FRONT
- LANDSCAPED GARDEN FRONT AND BACK
- VERSATILE PURPOSE BUILT SUMMER ROOM/GYM/OFFICE AND SEPERATE STORAGE AREA
- LOCATED IN A CUL DE SAC IN THE POPULAR LOCATION OF CEFN GLAS
- VERSATILE AND BEAUTIFULLY PRESENTED PROPERTY IS A MUST TO VIEW
- THIS BEAUTIFUL PROPERTY COMES WITH FULL PLANNING FOR A

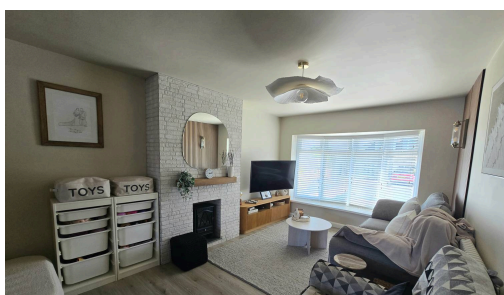


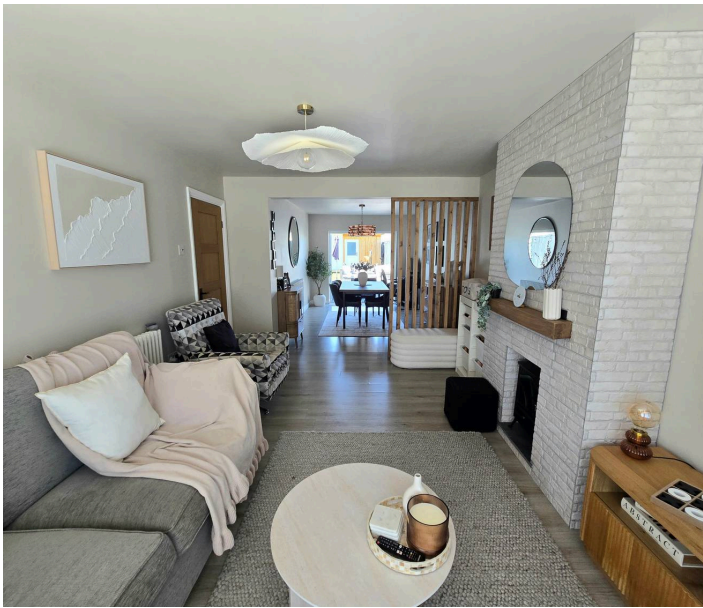
Council Tax band: C

Tenure: Freehold

EPC Energy Efficiency Rating: D

EPC Environmental Impact Rating: D





LOUNGE

UPVC double glazed bay window to front aspect of this beautifully presented open plan lounge/dining room, plain walls, plain ceiling, laminate flooring, feature brick wall and fire inset with subtle bespoke modern room divide which allows you to enter to the dining area:-

DINING ROOM

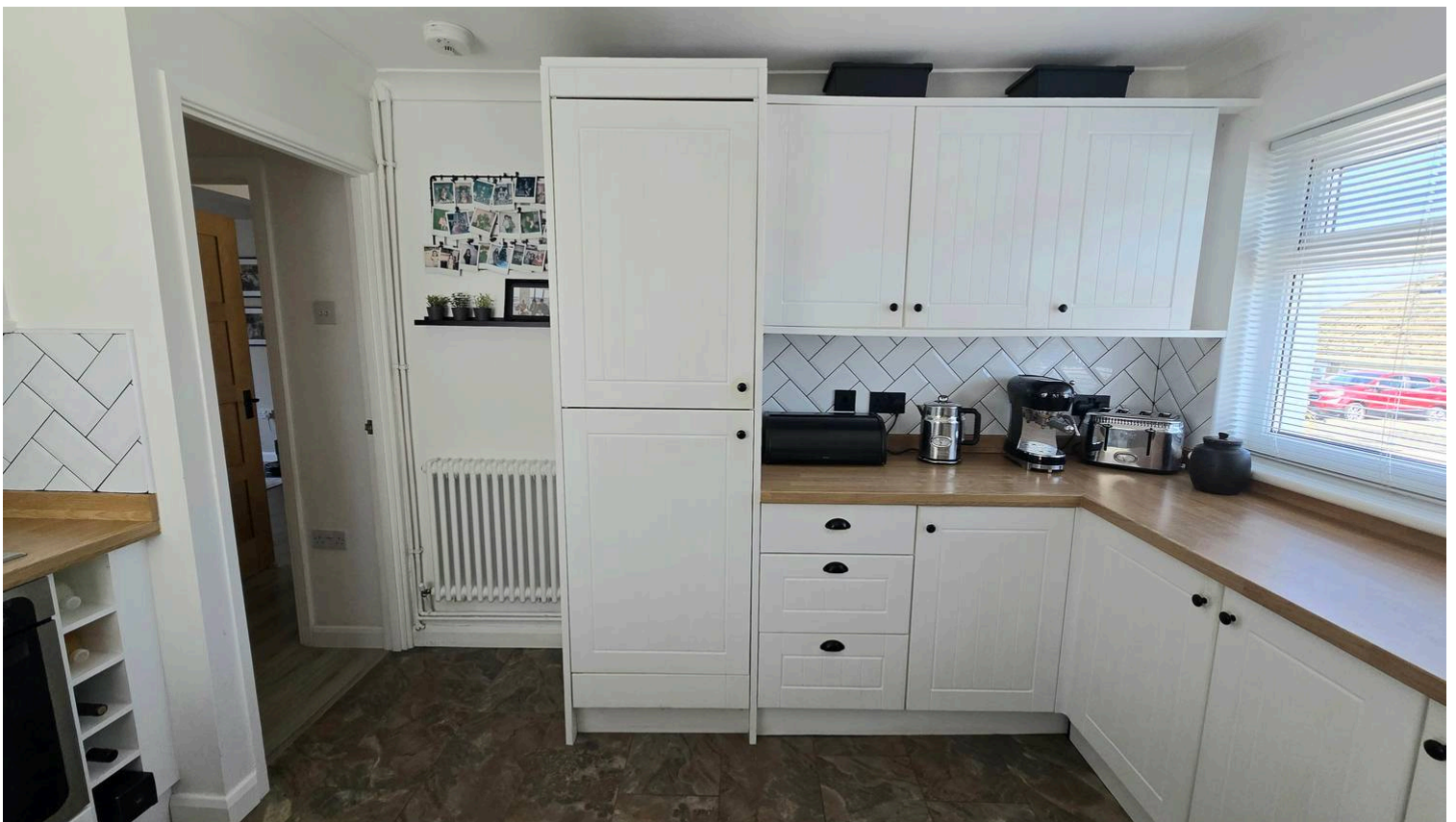
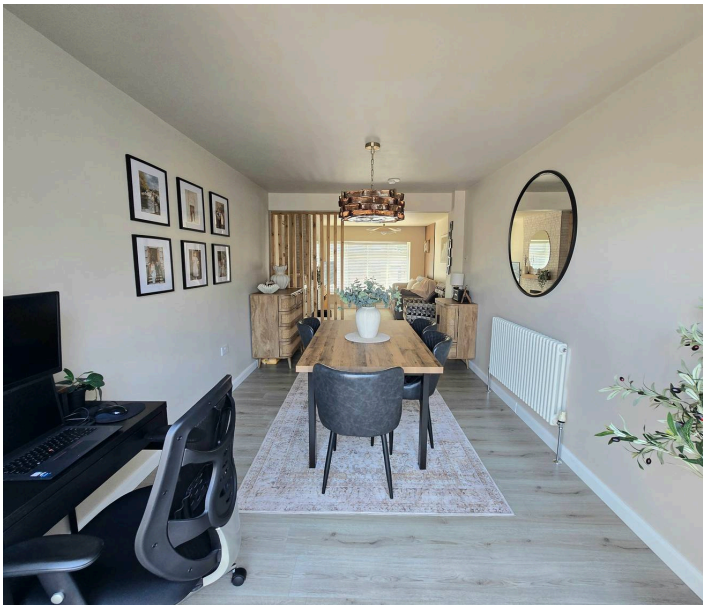
Double glazed french doors open out to the beautiful enclosed garden with plain walls, plain ceiling, feature radiator and laminate flooring, this room was previously a bedroom and could easily be reconfigured.

KITCHEN

UPVC double glazed window to front aspect and composite door to side aspect, Range of wall and base units with complimentary worktop, composite sink with mixer tap, gas hob with electric oven and extractor hood over, integrated fridge/freezer, space for a washing machine, radiator, plain and tile walls and laminate flooring.

HALLWAY

Inner hallway allows access to all rooms with plain walls, plain ceiling, laminate flooring, modern radiator, oak internal doors.



BEDROOM ONE

UPVC double glazed window to rear aspect, plain walls, textured ceiling, modern radiator and carpet flooring.

BEDROOM TWO

UPVC double glazed window to side aspect, plain walls, textured ceiling, fitted storage, radiator and carpet flooring.

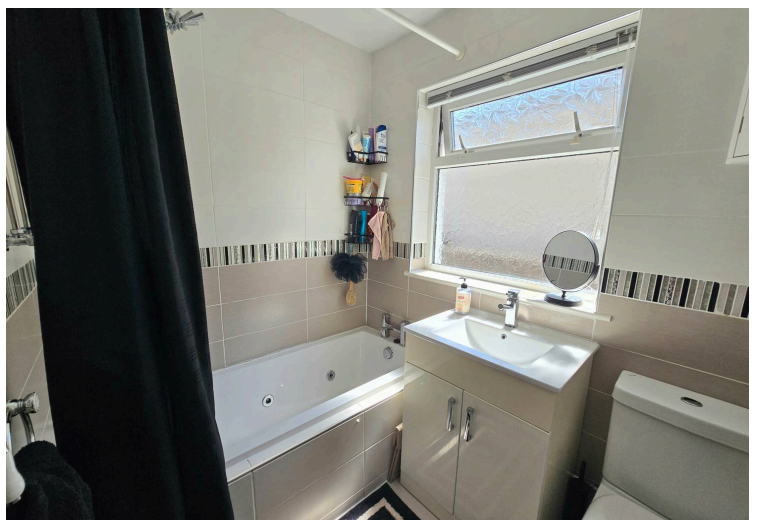
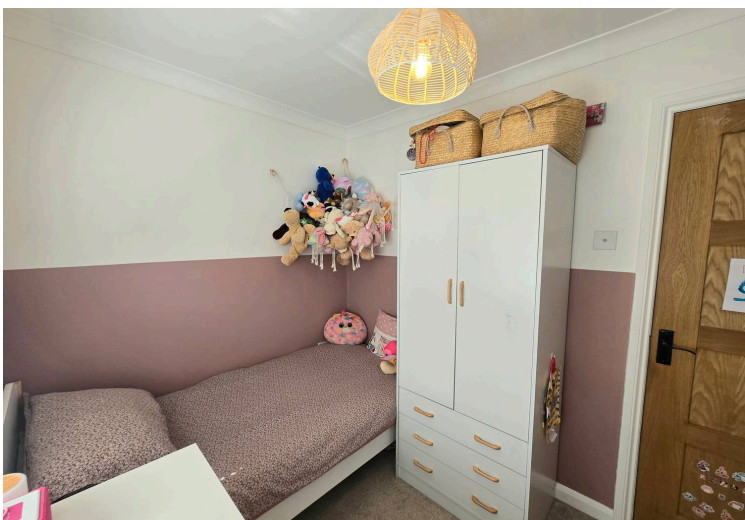
BATHROOM

UPVC double glazed window to side aspect, Three piece suite comprises jacuzzi bath with shower over, plain and tile walls, vanity unit wash hand basin, low level wc, vinyl flooring and towel radiator.

Garden

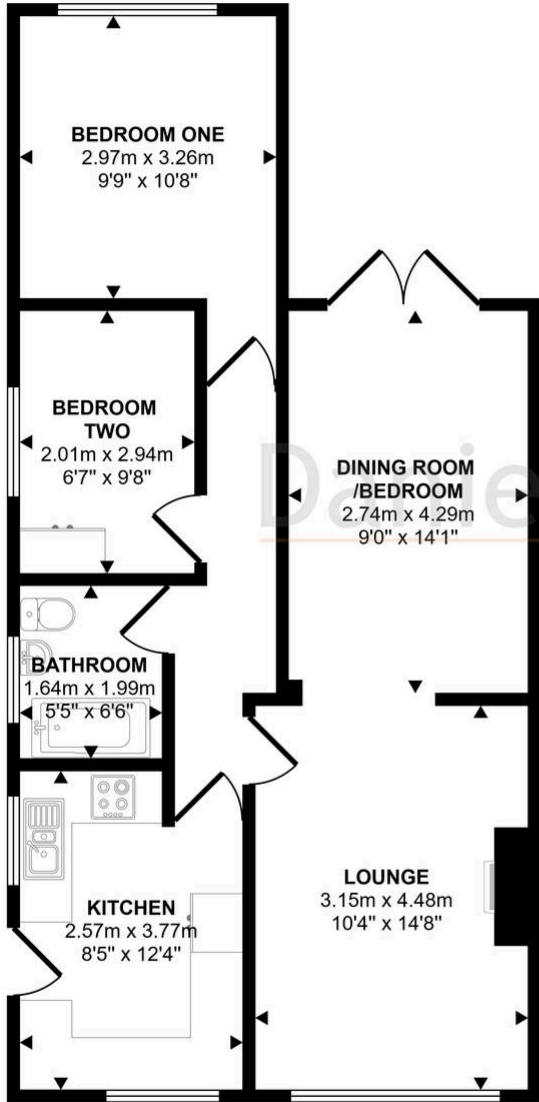
Landscaped garden with a liad to deck for relaxing or entertaining, laid to lawn, side block drive excellent for storage, purpose built summer room/gym is a perfect and versatile addional to the garden.



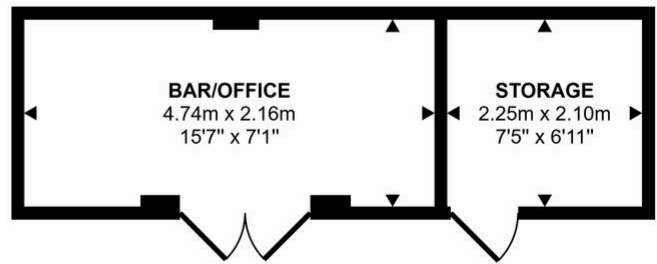




Approx Gross Internal Area
78 sq m / 839 sq ft



Floorplan
Approx 63 sq m / 675 sq ft



Outbuildings
Approx 15 sq m / 164 sq ft

This floorplan is only for illustrative purposes and is not to scale. Measurements of rooms, doors, windows, and any items are approximate and no responsibility is taken for any error, omission or mis-statement. Icons of items such as bathroom suites are representations only and may not look like the real items. Made with Made Snappy 360.

You can include any text here. The text can be modified upon generating your brochure.