



King & Queen Wharf, SE16

£250,000

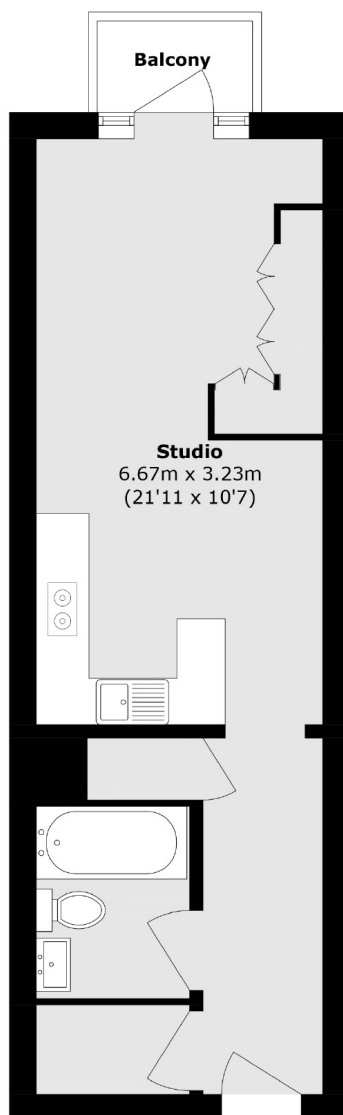
Situated within this sought-after riverside development, this studio apartment boasts a large private balcony with river views, open plan kitchen-living space, plus secure parking, resident's porter and swimming pool facilities.

King and Queen Wharf is 0.6 miles from Rotherhithe Station and 0.8 miles from Canada Water station. The flat offers excellent transport links to the rest of London. A number of attractions, riverside pubs and restaurants are also close by.

Features

- River Views
- Private Balcony
- Studio Apartment
- Chain Free
- Residents' Porter & Pool
- Secure Parking

King & Queen Wharf, London, SE16



Total area (approx.): 34.8 sq. m (372.5 sq. ft)

Balcony area (approx.): 1.8 sq. m (19.3 sq. ft)