

36 Lavender Drive

Rudheath, Northwich

Impressive four bed detached home with nearby river walks. Ideal for modern family living.

Council Tax band: D

Tenure: Freehold

EPC Energy Efficiency Rating: D

EPC Environmental Impact Rating: E

- Detached Family Home
- Four Bedrooms
- Spacious Driveway
- Utility Room
- Downstairs WC
- En-Suite to the Master Bedroom
- Rear Garden (Not Overlooked!)
- Lounge & Separate Dining Room
- River Walks Nearby
- Award Winning Pub/Restaurant Nearby

Entrance Hallway

Lounge

Dining Room

Kitchen

Utility Room

Downstairs WC

Landing

Master Bedroom

En-Suite

Bedroom Two

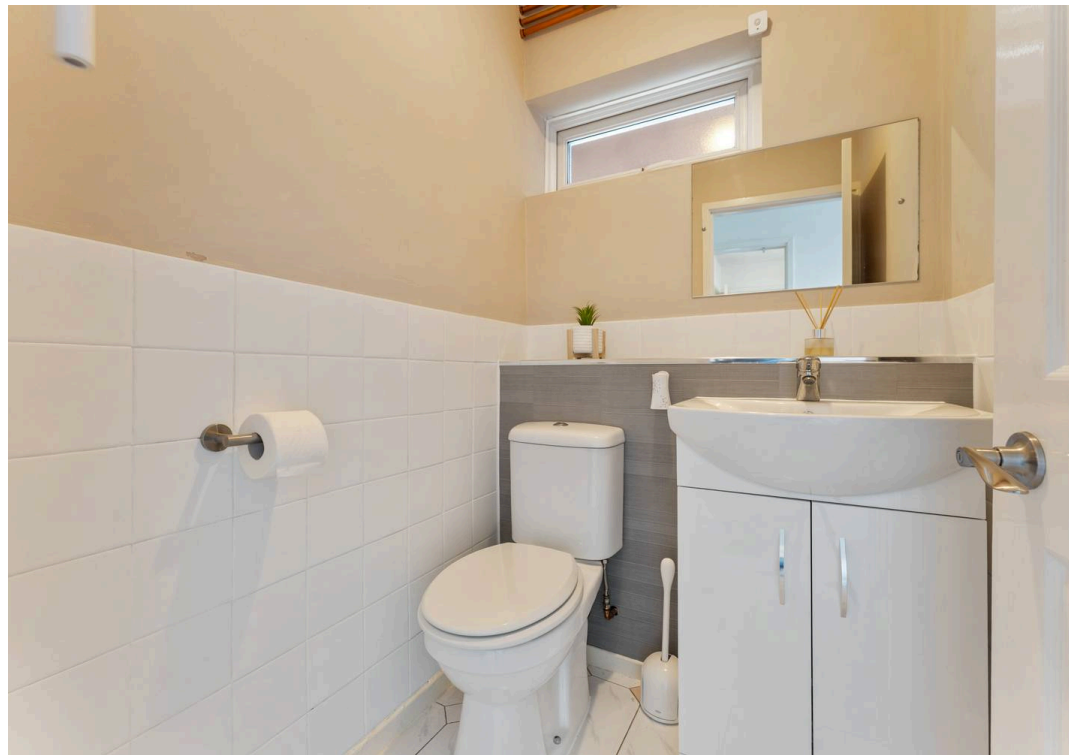
Bedroom Three

Bedroom Four

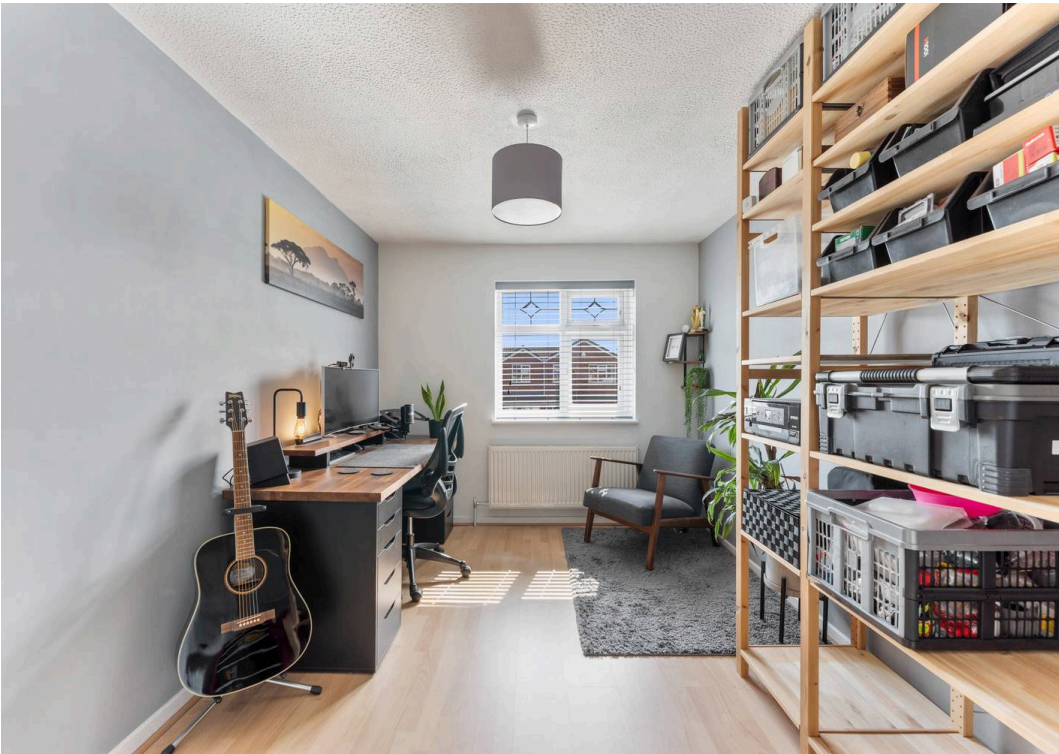
Bathroom



















**36 Lavender Drive,
Northwich**

DETAILS

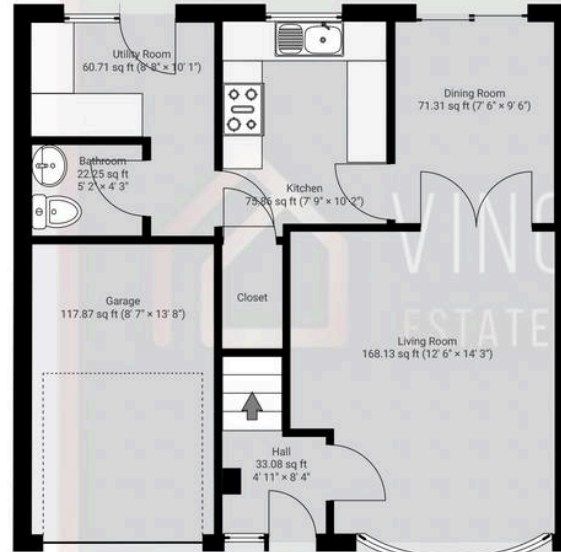
Total area: 1144.18 sq ft
Living area: 1026.31 sq ft
Floors: 2
Rooms: 19

THIS FLOORPLAN IS PROVIDED WITHOUT WARRANTY OF ANY KIND. VINCENT JAMES ESTATE AGENCY DISCLAIMS ANY WARRANTY INCLUDING, WITHOUT LIMITATION, SATISFACTORY QUALITY OR ACCURACY OF DIMENSIONS.



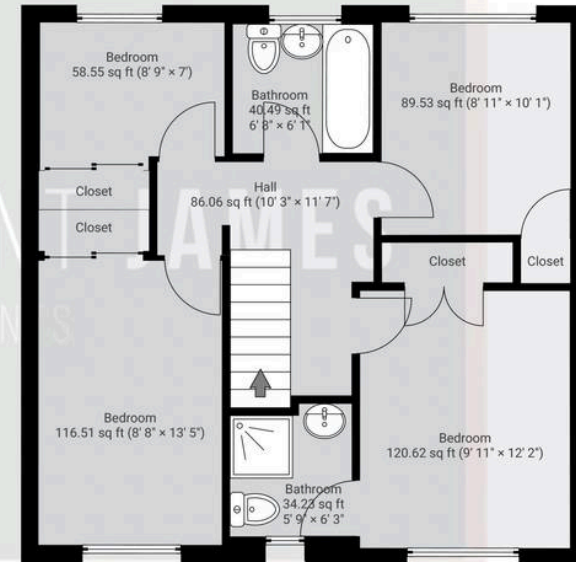
▼ **Ground Floor**

TOTAL AREA: 562.76 sq ft • LIVING AREA: 444.89 sq ft • ROOMS: 8



▼ **1st Floor**

TOTAL AREA: 581.42 sq ft • LIVING AREA: 581.42 sq ft • ROOMS: 11



Vincent James Estate Agents

87 Witton Street, Northwich – CW9 5DR

01606663939 • hello@vincentjamesestateagents.co.uk • www.vincentjamesestateagents.co.uk/