



Landor Road, SW9

£525,000

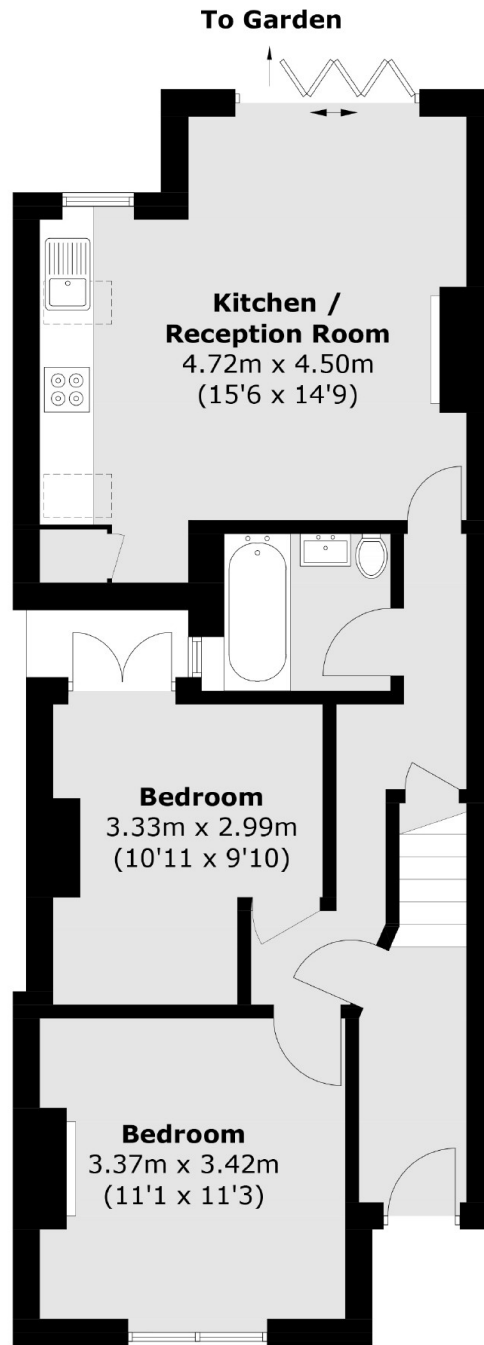
A ground-floor period conversion presented in superb condition throughout, comprising an impressive open plan reception room with a well-equipped kitchen and ample room to dine, a low maintenance garden accessed via bi-folding doors, two double bedrooms and a bathroom.

Landor Road is located moments from the many shops, restaurants and bars of Clapham High Street, with excellent transport links into central London from Clapham North and Stockwell Underground stations (Northern & Victoria Lines).

Features

Period Conversion
Open Plan Reception
Two Bedrooms
Private Garden
Proximity To Tube
Chain Free

Landor Road,
London, SW9



Ground Floor

Total area (approx.): 58.0 sq. m (624.3 sq. ft)

Dexters

Clapham High Street
55 Clapham High Street
London
SW4 7TG
Sales
020 7483 6363

Energy Rating: C. We aim to make our particulars both accurate and reliable. However they are not guaranteed; nor do they form part of an offer or contract. If you require clarification on any points then please contact us, especially if you're traveling some distance to view. Please note that appliances and heating systems have not been tested and therefore no warranties can be given as to their good working order.

 **RICS** | Regulated
Estate Agent
and Letting Agent

[dexters.co.uk](https://www.dexters.co.uk)