



WORPLE ROAD, SW19

£2,495 per month

Two double bedrooms

Two bathrooms

Separate kitchen

Furnished

Balcony

Energy rating: c

@marshandparsons
marshandparsons.co.uk

MARSH &
PARSONS



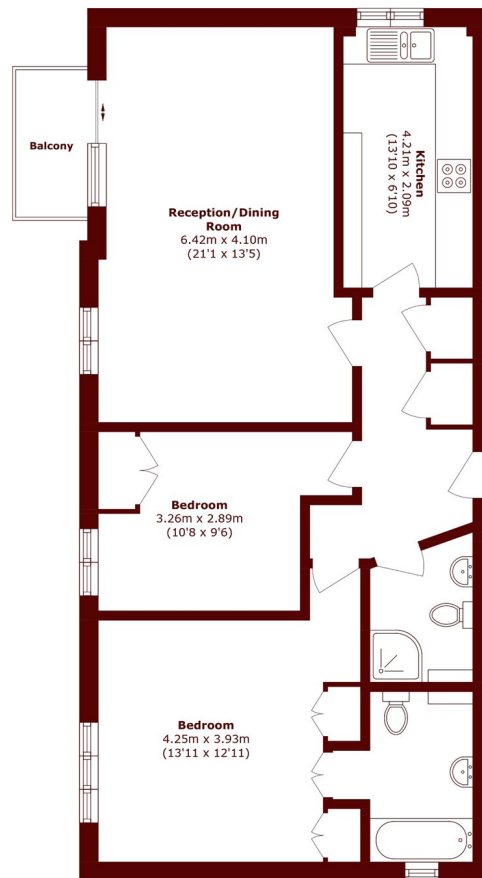
ABOUT THE PROPERTY

This two bedroom purpose built apartment offers a reception room with door to balcony, fitted kitchen, principal bedroom with en suite bathroom, further double bedroom and separate shower room.

The property is located under half a mile from Wimbledon station.



STEP INSIDE WORPLE ROAD



Total area (approx.): 80.8 sq. m (869.7 sq. ft)
Balcony area (approx.): 2.7 sq. m (29.0 sq. ft)

Wimbledon
020 8879 6661

Energy Rating: C We aim to make our particulars both accurate and reliable. However, they are not guaranteed; nor do they form part of an offer or contract. If you require clarification on any points then please contact us, especially if you're traveling some distance to view. Please note that appliances and heating systems have not been tested and therefore no warranties can be given as to their good working order

MARSH &
PARSONS