

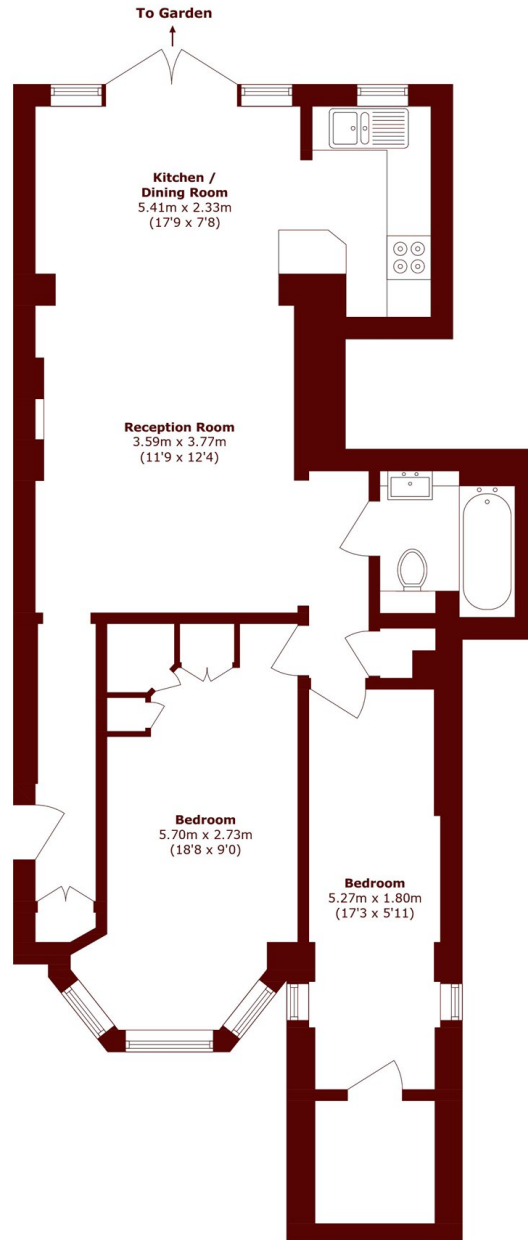


Gauden Road, SW4

£550,000

2 1 1 D

- Victorian maisonette
- Private entrance
- Communal garden with pool
- 163 year lease remaining
- Generous living space
- Close to Clapham Common



Total area (approx.): 71.2 sq. m (766.4 sq. ft)

Marsh & Parsons Clapham

28 Old Town, London, SW4

OLB

020 7501 3666