



Creffield Road, W5

£499,950

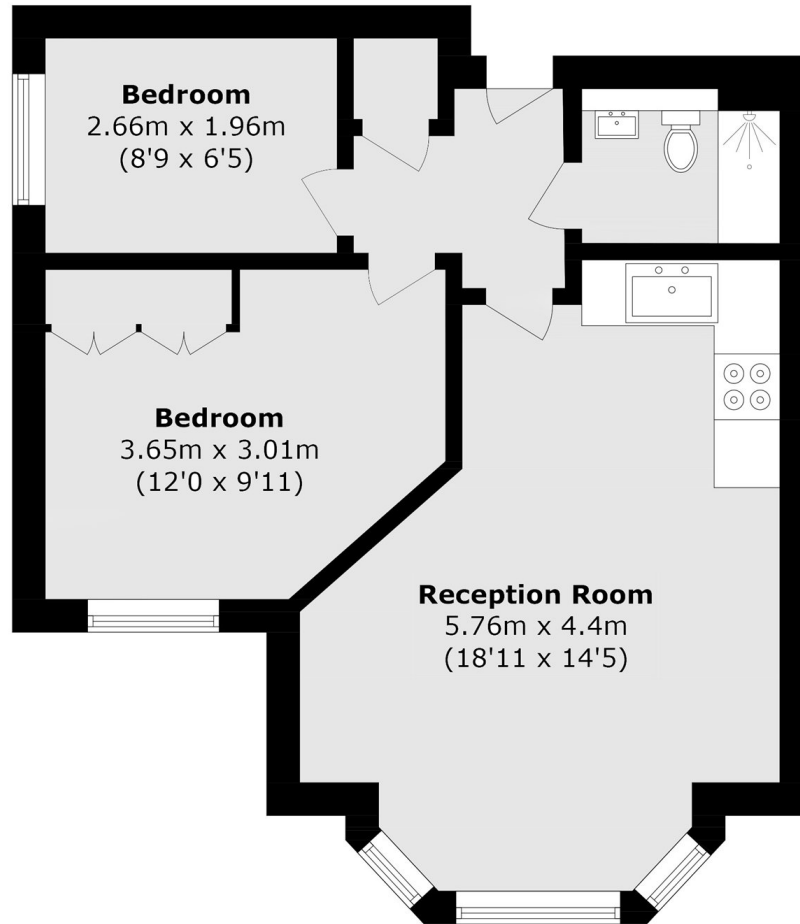
This first floor period conversion was constructed in 2021 and benefits from approximately five years remaining new build warranty. Immaculate throughout, there is a spacious open plan kitchen/reception room, a double bedroom and second room currently used as a home office/occasional guest room.

Located just moments from the green space of Ealing Common, along with the tube station for the Piccadilly and District Lines. Central Line access is close by with West Acton station. Ealing Broadway is approximately three quarters of a mile for the new Elizabeth Line.

Features

- First Floor
- New Conversion
- Communal Garden
- Close To Transport
- Long lease Length
- Remaining New Build Warranty

Creffield Road,
LONDON, W5



Total area (approx.): 42.7 sq. m (459.6 sq. ft)

Dexters

Ealing
2 New Ealing Broadway
London
W5 2NU
Sales
020 8810 0909

Energy Rating: C. We aim to make our particulars both accurate and reliable. However they are not guaranteed; nor do they form part of an offer or contract. If you require clarification on any points then please contact us, especially if you're traveling some distance to view. Please note that appliances and heating systems have not been tested and therefore no warranties can be given as to their good working order.

 **RICS** | Regulated
Estate Agent
and Letting Agent

[dexters.co.uk](https://www.dexters.co.uk)