



JOWEBSTER

Maple Lodge
Kensington Green, W8



Property Attributes

- Reception Room with Dining area
- Kitchen
- Three Bedrooms
- Two Bathrooms (One En suite)
- Car Parking
- Gym
- 24 Hour Security
- Landscaped Gardens



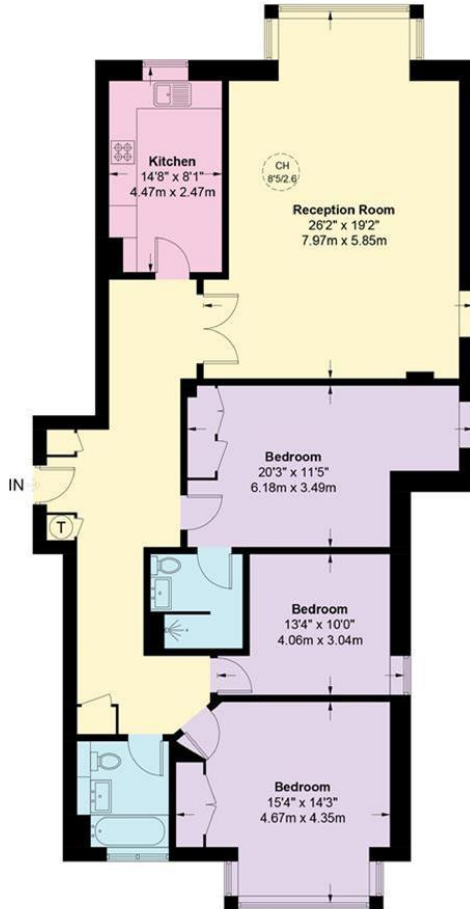
Terms

- Price: £1,950,000
- Borough: Royal Borough of Kensington And Chelsea
- Tenure:
- Share of Freehold approx. 960 years remaining
- Service Charge: Approx. £11,000 per annum
- Ground Rent: Approx. £200 per annum
- Council Tax Band: Band H



Maple Lodge, 5UN

Approximate Gross Internal Area = 1386 sq ft / 128.8 sq m



Raised Ground Floor



This plan is for layout guidance only. Not drawn to scale unless stated.
Windows and door openings are approximate.
Whilst every care is taken in the preparation of this plan, please check all dimensions, shapes and compass bearings before making any decisions reliant upon them. (ID936517)



+44 (0) 20 7349 7055
sales@jowebster.com

Misdescription Act

We wish to advise prospective purchasers that these sales particulars are believed to be correct, but their accuracy is in no way guaranteed, nor do they form any part of contract. We have not carried out a detailed survey nor tested the services, appliances or specific fittings. Measurements are approximate.