





**Towers
Wills**

Town & Country

22 Hillgrove Avenue, Yeovil, Somerset, BA20 2LP

£525,000

 01935 577 032 | 01460 298 530 |  info@towerswills.co.uk



Towers Wills welcome to the market this magnificent 4/5 bedroom detached family home situated in a highly desirable location occupying a generous corner plot. Featuring versatile living space from three/four reception rooms, four/five double bedrooms (Master en-suite), W.C, utility room. Outside a gated driveway, detached double garage and wrap-around gardens, with annexe potential (STPP). Close to local shop, amenities and countryside walks. Viewing is essential to fully appreciate this wonderful home.

***Detached House**

***Sought-After Location**

***Four/Five Double Bedrooms**

***Master En-suite**

***Three/Four Reception Rooms**

***Generous Corner Plot**

***Detached Double Garage**

***Gated Driveway**





Set on a generous corner plot along one of Yeovil's most desirable roads, this substantial four/ five bedroom detached family home offers an exceptional balance of space, flexibility and lifestyle. Positioned on the sought-after southern fringe of Yeovil, the property enjoys a peaceful residential setting while remaining conveniently close to everyday amenities and surrounding countryside.

The home is designed with modern family living in mind, offering a versatile and well-proportioned layout throughout. A welcoming reception hallway sets the tone, leading through to a spacious lounge-diner—ideal for both relaxing and entertaining—alongside a separate drawing room that provides a cosy retreat, with outlook to the rear garden. The kitchen-breakfast room forms the heart of the home, perfectly suited to busy mornings and sociable gatherings, complemented by a useful utility room and ground floor cloakroom/WC.

A key feature of the property is its adaptability, with a third reception room that could easily serve as a ground floor bedroom, benefitting from its own en suite—ideal for multi-generational living or guest accommodation.



Upstairs, the property continues to impress with four generous double bedrooms. The principal suite enjoys its own en suite facilities, while the remaining bedrooms are served by a well-appointed family bathroom, offering comfortable and practical living for growing families.

Externally, the property truly excels. Occupying a prominent corner position, the gardens wrap around the east, south and west aspects, ensuring sunlight throughout the day. The main south-facing garden is predominantly laid to lawn with a patio seating area, perfect for outdoor dining and entertaining. A further garden area to the west provides additional space and flexibility for family use.



A gated driveway offers ample off-road parking and leads to a detached double garage, which presents excellent potential for conversion into an annexe or home office, subject to the necessary planning permissions. An additional large driveway area further enhances the practicality of the home.

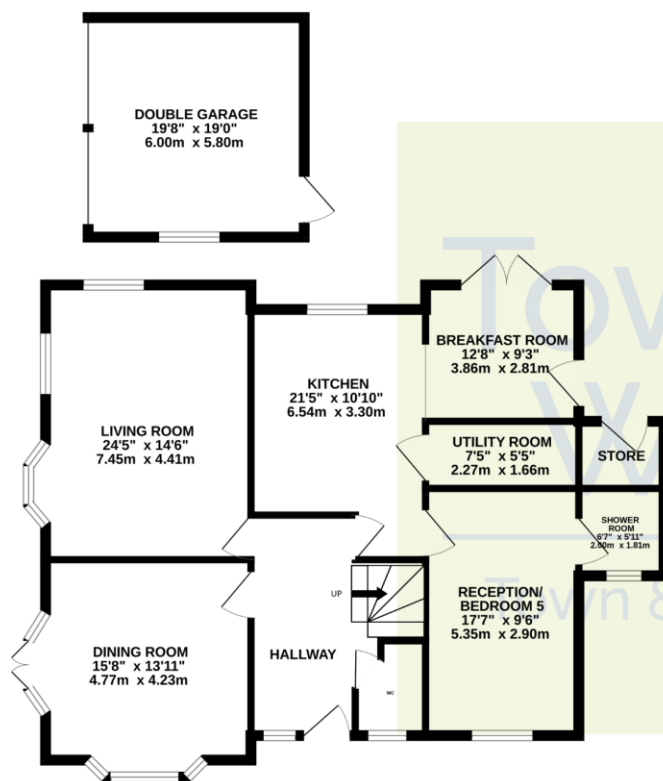
Hillgrove Avenue is ideally located within walking distance of local shops, including a convenience store, pharmacy and hairdressers, while larger supermarkets and facilities are just a short drive away. For those who enjoy the outdoors, scenic countryside walks are close by, making this an ideal setting for both convenience and lifestyle.

This is a rare opportunity to acquire a substantial and versatile family home in a prime Yeovil location, offering space, flexibility and future potential in equal measure.

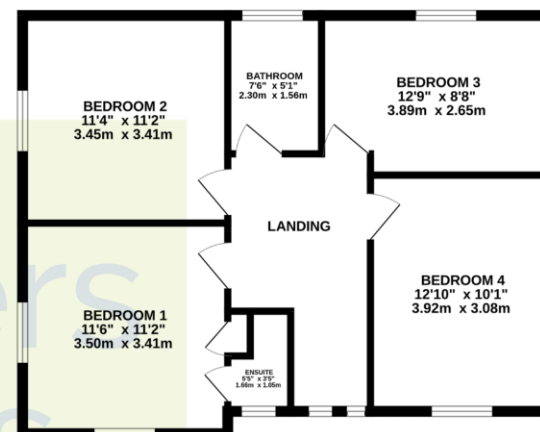




GROUND FLOOR



1ST FLOOR



Whilst every attempt has been made to ensure the accuracy of the floorplan contained here, measurements of doors, windows, rooms and any other items are approximate and no responsibility is taken for any error, omission or mis-statement. This plan is for illustrative purposes only and should be used as such by any prospective purchaser. The services, systems and appliances shown have not been tested and no guarantee as to their operability or efficiency can be given.
Made with Metropix ©2026

T: 01935 577032 E: info@towerswills.co.uk

The White House 114 Hendford Hill, Yeovil, Somerset BA20 2RF

www.towerswills.co.uk

Please Note No tests have been undertaken of any of the services and any intending purchasers should satisfy themselves in this regard. Towers Wills Ltd for themselves and for the vendor of this property whose agents they are, give notice that, (i) these particulars do not constitute any part of an offer or contract, (ii) all statements contained within these particulars are made without responsibility on the part of Towers Wills or the vendor, (iii) whilst made in good faith, none of the statements contained within these particulars are to be relied upon as a statement of representation or fact, (iv) any intending purchaser must satisfy him/herself by inspection or otherwise as to the correctness of each of the statements contained within these particulars, (v) the vendor does not make or give either Towers Wills or any person in their employment any authority to make or give representation or warranty whatsoever in relation to this property. Photographs / Floor Plans Photographs are reproduced for general information and it must not be inferred that any item is included for sale with this property. Please note floor plans are not to scale and are for identification purposes only. The photographs used in these particulars may have been taken with the use of a wide angle lens. If you have any queries as to the size of the accommodation or plot, please address these with the agent prior to making an appointment to view.