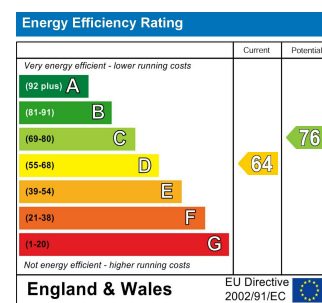
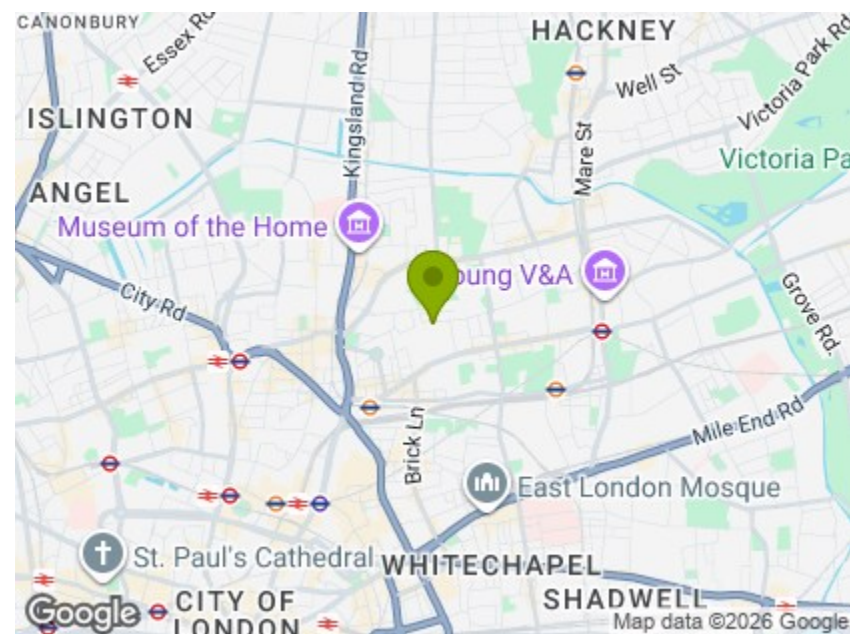


Ground Floor

Lower Ground Floor

Total Area: 55.9 m² ... 602 ft²
 All measurements are approximate and for display purposes only.



GOSSET STREET, HACKNEY

£3,600 Per Calendar Month
 2 Bed Flat



Features:

- Short Let
- All Bills Included
- Pub Conversion
- Walking Distance To Bethnal Green Tube Station
- Green Open Spaces Nearby
- Moments From Columbia Road

A gorgeously realised two bedroom pub conversion, laid out over two floors and within easy walking distance of the City. Ingeniously arranged with high ceilings and plenty of natural light, you have plenty of original architectural details throughout.

You're just five minutes from Bethnal Green Road and its timeless range of pubs and restaurants, plus the famous Working Men's Club, a great venue with a diverse range of events.

REQUEST A VIEWING
 0208 520 3077

E11, E7, E12 & E15
 hello11@stowbrothers.com
 0203 397 2222

E4 & N17
 hello4@stowbrothers.com
 0203 369 6444

E17 & E10
 hello17@stowbrothers.com
 0203 397 9797

E18 & IG8
 hello18@stowbrothers.com
 0203 369 1818

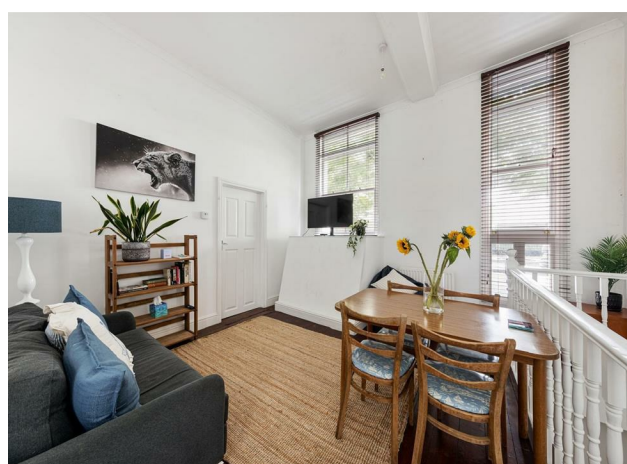
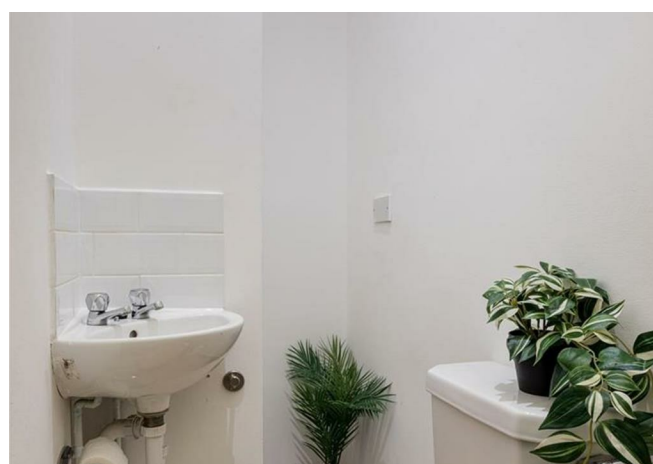
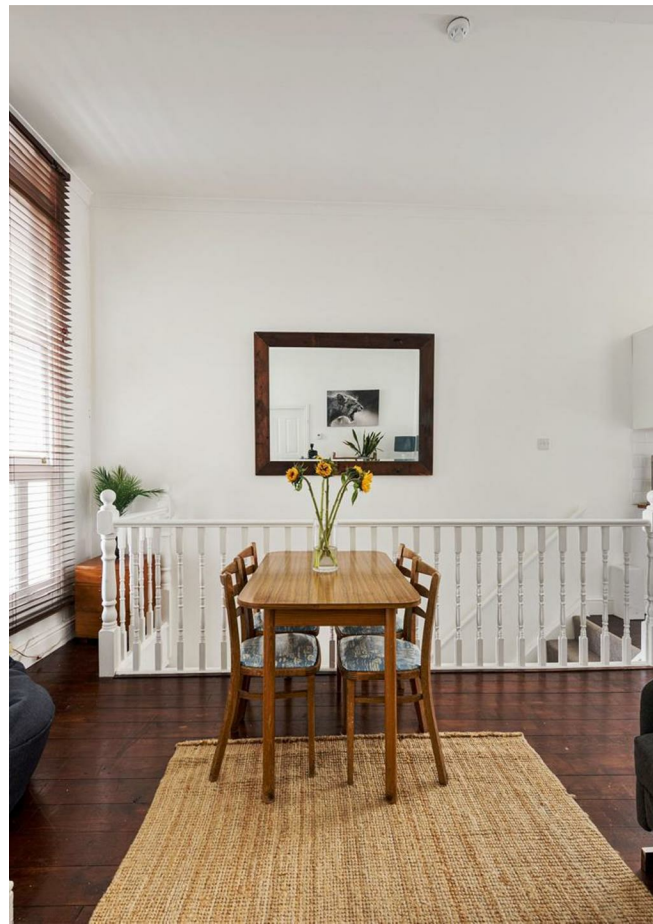
E8, E9, E5, N16, E3 & E2
 hellohackney@stowbrothers.com
 0208 520 3077

New Homes
 newhomes@stowbrothers.com
 0203 325 7227

Investment & Development
 id@stowbrothers.com
 0208 520 6220

Property Maintenance
 propertymanagement@stowbrothers.com
 0203 325 7228

STOWBROTHERS.COM
 @STOWBROTHERS



IF YOU LIVED HERE...

Step inside and you have a handy guest WC on the right, always a welcome bonus. Step on into your 200 square foot reception room, complete with twin windows, dark hardwood floors and high ceilings. It's laid open to your kitchen, featuring white metro tiled splashbacks, timber worktops and a twin butler sink.

Your first bedroom completes the storey, a solid double positioned just off the lounge. Downstairs, your bathroom is similarly stylish, with pristine white

metro tilework from floor to ceiling, a tall chrome heated towel rail and a shower over the tub. Your principal bedroom comes in at a substantial 140 square feet with twin skylights and a mezzanine bed.

Outside, and you can easily complete your City commute on foot. It's just a twenty five minute walk to Liverpool Street station and the heart of the City. Shoreditch High Street is closer still, just fifteen minutes for the famous Shoreditch nightlife. And of course you have Bethnal Green Road right on your doorstep.



WHAT ELSE?

- Bethnal Green tube is around a half mile away on foot for the Central line.
- You're well served for open green space with Weavers Fields, Ion Square Gardens and Haggerston Park all within easy reach. All great for joggers and strollers alike.
- You have a staggering range of nightlife at your fingertips, but for your new local, be sure to check out the Kings Arms just the other side of Bethnal Green Road, a charming community pub.
- Columbia Road Flower Market is a must visit running on Sundays.

REQUEST A VIEWING
0208 520 3077

FOLLOW US → @STOWBROTHERS
STOWBROTHERS.COM



REQUEST A VIEWING
0208 520 3077

FOLLOW US → @STOWBROTHERS
STOWBROTHERS.COM



REQUEST A VIEWING
0208 520 3077

FOLLOW US → @STOWBROTHERS
STOWBROTHERS.COM