





A SOUGHT AFTER VILLAGE LOCATION WITHIN DN3 AND THIS DELIGHTFUL DETACHED BUNGALOW OFFERS PLENTY WITH THREE BEDROOMS.

Positioned in a lovely garden plot this property is not only deceptively spacious but also beautifully presented throughout. In brief the accommodation comprises of entrance hallway, lounge, kitchen/diner, utility room, three fantastic bedrooms, bathroom with three piece suite, front/rear garden, off street parking on the driveway and detached garage. AVAILABLE WITH NO UPWARD CHAIN.



ENTRANCE HALL

4' 1" x 18' 10" (1.26m x 5.75m) The property is accessed via the front facing double glazed frosted door to the entrance hallway, radiator, laminate flooring, coving to the ceiling, dado rail and provides further access to all accommodation.

LOUNGE

11' 10" x 15' 10" (3.61m x 4.84m) Fabulous reception room overlooking the front garden via the front facing double glazed bow window, decorative fireplace with space for an electric fire, picture rail, dado rail and a radiator.

KITCHEN/DINER

10' 10" x 10' 1" (3.31m x 3.08m) Beautiful kitchen/diner with a range of fitted cabinetry at both eye and base level, work surfaces incorporating a single and half bowl sink with drainer unit, partially tiled splash backs, integrated fridge/freezer, four ring gas hob with extractor fan above, single electric oven, radiator, dado rail, coving, door to the utility room and front facing double glazed window.

UTILITY ROOM

3' 6" x 5' 4" (1.07m x 1.64m) Useful utility space with fitted storage, roll top surface above plumbing for a washing machine, coving, radiator, side facing double glazed frosted window and side facing double glazed frosted door.

BEDROOM

10' 1" x 11' 10" (3.09m x 3.62m) Fabulous double bedroom with rear facing double glazed window, coving and a radiator.

BEDROOM

8' 10" x 11' 11" (2.71m x 3.64m) Further double bedroom with rear facing double glazed window, radiator and coving to the ceiling.

BEDROOM/STUDY

7' 10" x 8' 10" (2.41m x 2.70m) Versatile room with rear facing double glazed French doors to the garden, radiator, dado rail, coving and laminate flooring.



BATHROOM

5' 4" x 6' 6" (1.65m x 1.99m) Three piece suite comprising of a low flush WC, wash hand basin within a vanity unit, bath with shower screen above, electric shower unit, tiled walls, tiled flooring, extractor fan, spotlights, heated towel radiator and side facing single glazed frosted window.







FRONT GARDEN & DRIVEWAY

Double gates lead to the driveway providing off street parking, wall enclosed front garden with central lawn, surrounding flower beds/mature bushes and side access to the rear garden/garage.

GARAGE

Single garage with front access door.

REAR GARDEN

Fantastic private rear garden with mature bushes/trees, central lawn and a shed behind the garage.



NOTES

FREEHOLD PROPERTY

COUNCIL TAX BAND: C

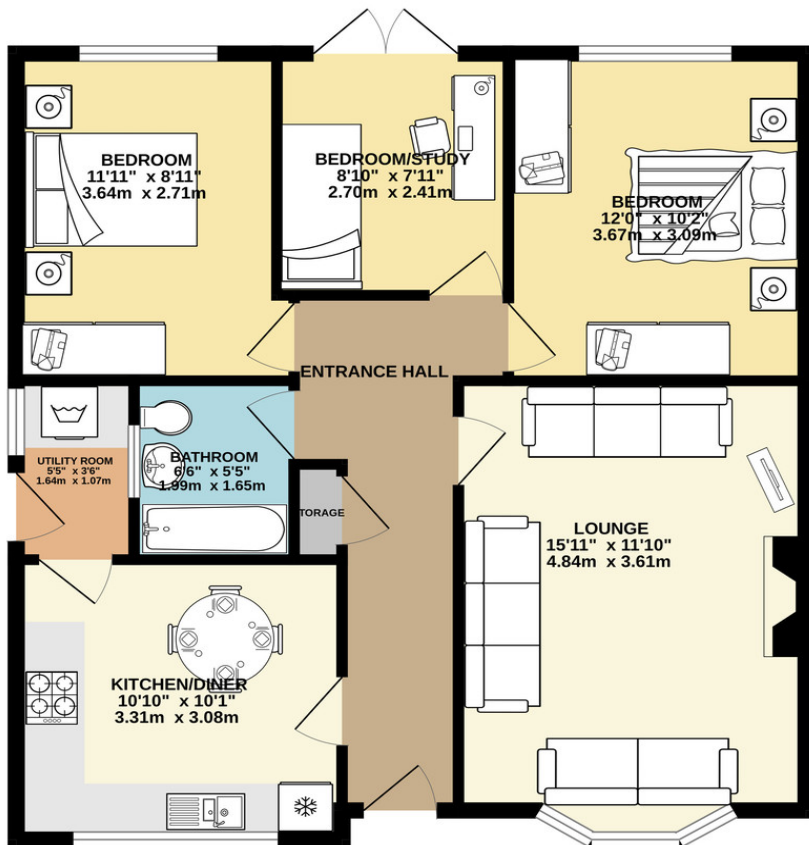
HEATING SYSTEM: GAS FIRED CENTRAL HEATING

LAST SERVICE: UNKNOWN

SERVICES: MAINS



GROUND FLOOR
759 sq.ft. (70.5 sq.m.) approx.



TOTAL FLOOR AREA : 759 sq.ft. (70.5 sq.m.) approx.

Whilst every attempt has been made to ensure the accuracy of the floorplan contained here, measurements of doors, windows, rooms and any other items are approximate and no responsibility is taken for any error, omission or mis-statement. This plan is for illustrative purposes only and should be used as such by any prospective purchaser. The services, systems and appliances shown have not been tested and no guarantee as to their availability or efficiency can be given.

