



## Friars Avenue, SW15

### £400,000

Situated in a small private residential estate adjacent to Wimbledon Common this cleverly arranged and well-proportioned one bedroom property is a perfect investment or first time purchase. The property was extensively renovated by the current owner to a high standard.

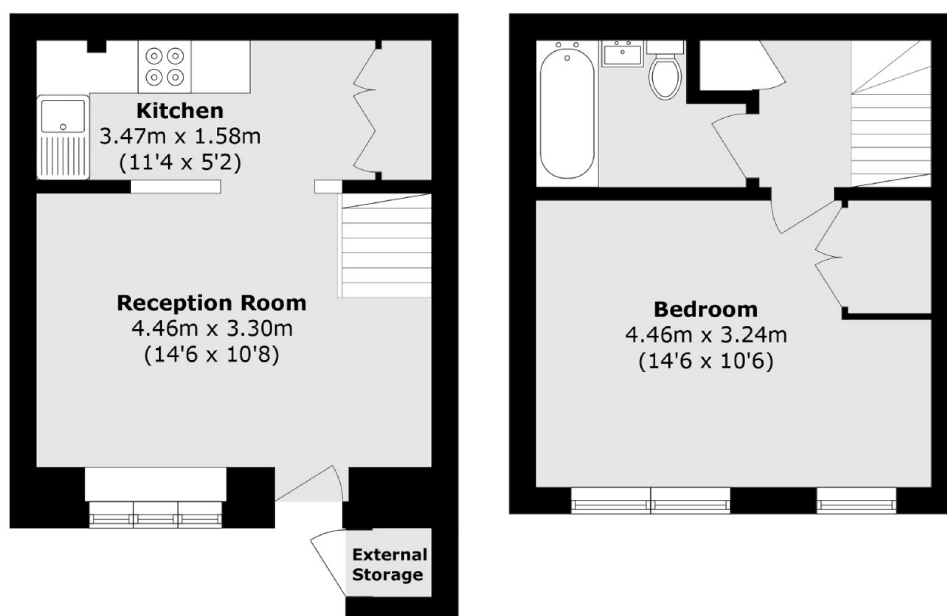
The property itself enjoys its own front garden, an allocated parking space and an outside storage area. Internally, there is a good sized reception room and bespoke storage in the kitchen and bedroom. The house also has a large boarded and lit attic space with customised access, perfect for suitcases and extra storage.

The property offers access to Putney, Wimbledon and Kingston, it is also conveniently located for Putney Heath and is offered to market with no onward chain.

### Features

- Freehold House
- Off Street Parking
- Private Garden
- Chain Free
- External Storage Cupboard
- 491 sqft

# Friars Avenue, London, SW15



Total area (approx.): 45.7 sq. m (491.9 sq. ft)  
External Storage area (approx.): 5.2 sq. m (55.9 sq. ft)