



19 Artemus Silvey Close, Great Oldbury, Stonehouse, GL10

£1,325 PCM

- Modern home
- Kitchen with dining area
- Minimum tenancy 12 months
- Three bedrooms
- Generous kitchen with appliances
- Council tax band: C
- En-suite shower room to primary bedroom
- Two allocated parking spaces
- EPC Rating: B

19 Artemus Silvey Close, GL10 3FW

Approximate Gross Internal Area = 76.7 sq m / 825 sq ft

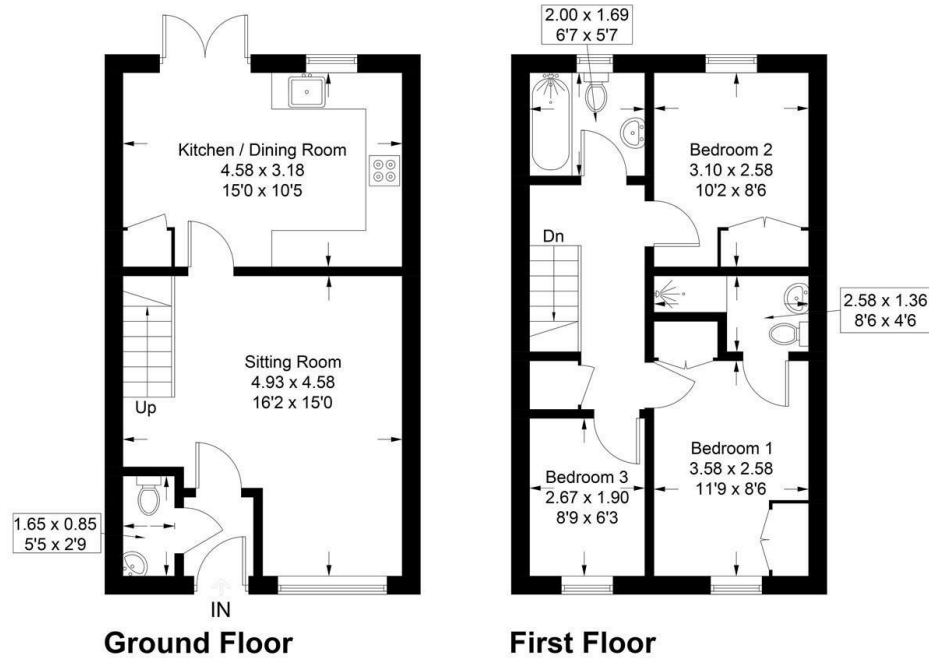


Illustration for identification purposes only, measurements are approximate, not to scale. Fourlabs.co © (ID1229585)



Directions

Viewings

Viewings by arrangement only. Call 01453 833847 to make an appointment.

Council Tax Band

C

EPC Rating:

B

Energy Efficiency Rating		Current	Potential
Very energy efficient - lower running costs			
(92 plus) A			96
(81-91) B		84	
(69-80) C			
(55-68) D			
(39-54) E			
(21-38) F			
(1-20) G			
Not energy efficient - higher running costs			
England & Wales		EU Directive 2002/91/EC	