



2 Ratten Row | | Caldbeck | CA7 8ED

Guide Price £260,000



david britton
ESTATES

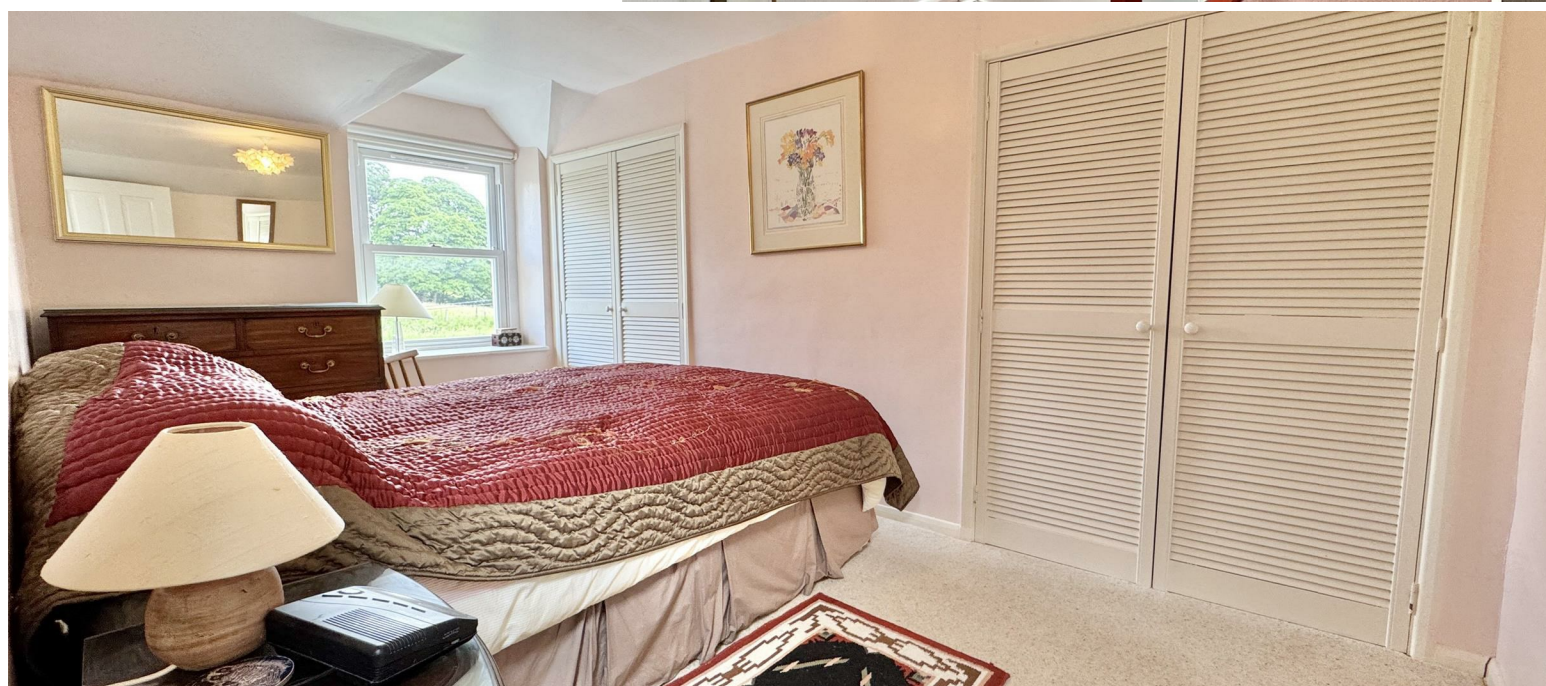
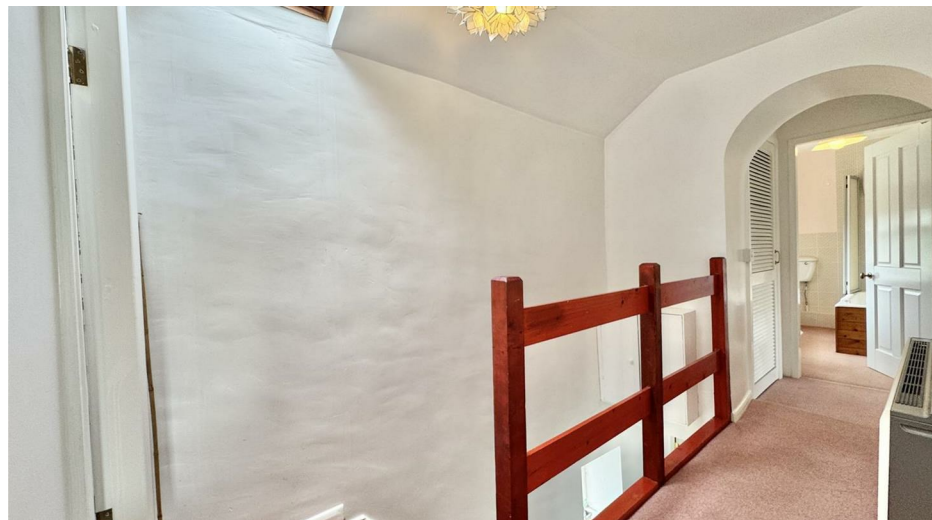


Key Features

- Terraced Cottage
- Three bedrooms
- Living room
- Kitchen Diner
- Bathroom
- Front garden
- Village location
- Lake District National Park
- Can only be used as a Primary residence

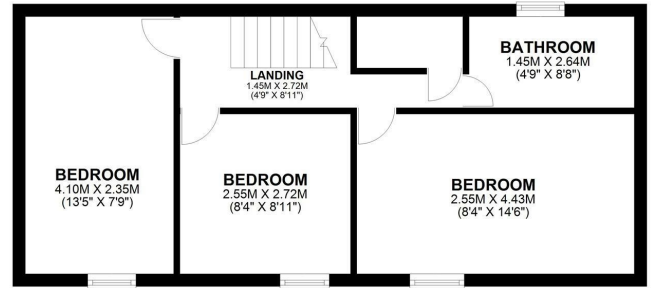
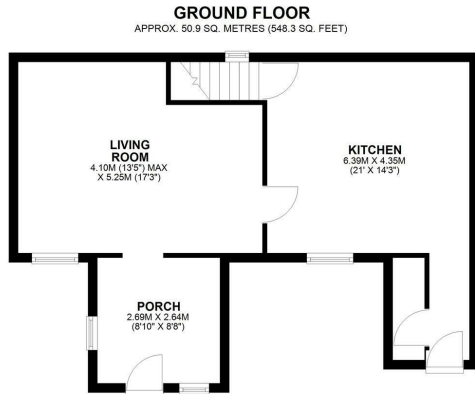
Summary

Charming three bed roomed terraced cottage in the pretty Village of Caldbeck in the Lake District National Park.





Floor plans



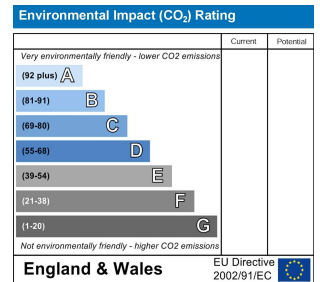
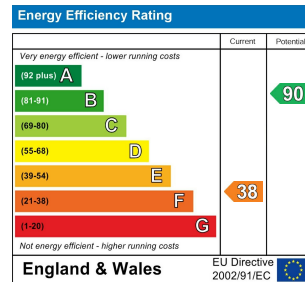
TOTAL AREA: APPROX. 90.7 SQ. METRES (976.3 SQ. FEET)

All measurements and details within this floorplan are approximate and are provided for illustrative purposes only. While every reasonable effort has been made to ensure accuracy, no responsibility is accepted for any errors, omissions, or misstatements. This floorplan should not be relied upon as a statement of fact and does not form part of any offer or contract. Prospective purchasers are advised to verify all measurements and details to their own satisfaction. Fixtures, fittings, services, systems, and appliances shown have not been tested and no warranty is given as to their operability or efficiency.
Plan produced using PlanUp.

COUNCIL TAX BAND - C

DISCLAIMER

These particulars, whilst believed to be accurate are set out as a general guideline and do not constitute any part of an offer or contract. Intending Purchasers should not rely on them as statements of representation of fact but must satisfy themselves by inspection or otherwise as to their accuracy. The services, systems, and appliances shown may not have been tested and has no guarantee as to their operability or efficiency can be given. All floor plans are created as a guide to the lay out of the property and should not be considered as a true depiction of any property and constitutes no part of a legal contract.



Unit 3 Mason Court Gillan Way, Penrith 40 Business Park
Penrith
Cumbria
CA11 9GR
01768881111
Sales@brittonestates.co.uk
www.brittonestates.co.uk