



TOWER BRIDGE ROAD, SE1

£3,500 pcm

A stylish two bedroom apartment with two bathrooms in Newham's Yard, fully furnished with a private balcony overlooking St Mary Magdalen Park. Just off Bermondsey Street near top spots like José and The Woolpack, and moments from London Bridge Station. Example photos used; actual layout may vary.

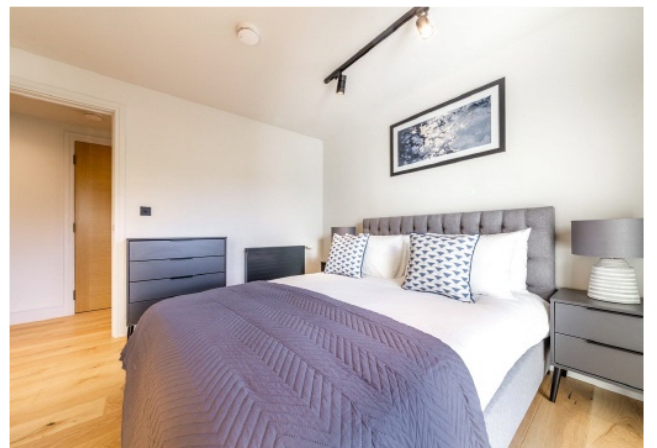
- Available Mid-August
- Private Balcony
- Daytime Concierge
- Communal Roof Terrace
- Short Walk to London Bridge
- EPC - B



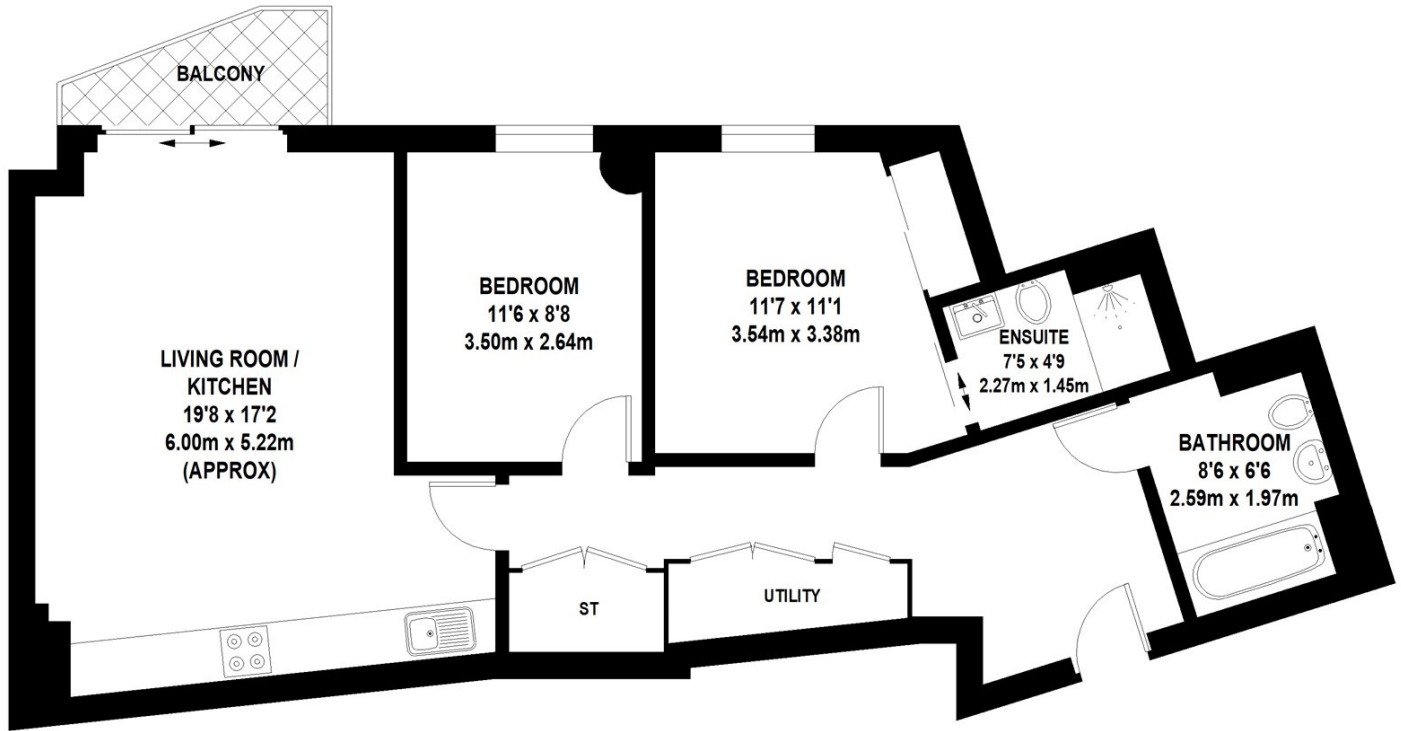
ABOUT THE HOME

Situated on the fifth floor, this beautifully presented two-bedroom apartment offers a rare opportunity to live in the heart of vibrant SE1. Fully furnished and spanning approximately 802 square feet, the property features a stylish open-plan living area, contemporary kitchen with integrated appliances, and a private balcony that directly overlooks the peaceful greenery of St Mary Magdalen Park a perfect retreat from city life.

A minutes walk from Bermondsey Street, which offers a vibrant village feel in central London, known for its independent cafés, restaurants, and bars. With London Bridge Station and Borough Station nearby, you'll enjoy excellent connectivity alongside a thriving local scene.







TOTAL APPROX. FLOOR AREA 802 SQ.FT. (74.55 SQ.M)

Whilst every attempt has been made to ensure the accuracy of the floor plan contained here, measurements of door, windows, rooms and any other items are approximate and no responsibility is taken for any error, omission, or mis-statement. This plan is for illustrative purposes only and should be used as such by any prospective purchaser. The services, systems and appliances shown have not been tested and no guarantee as to their operability or efficiency can be given

© 2023 (ID1023269)

LiFE RESIDENTIAL

252 Westminster Bridge
Road, London, SE1 7PD
Sales: 020 7476 0125
Lettings: 020 7620 1600

Energy Rating: B. We aim to make our particulars both accurate and reliable. However they are not guaranteed; nor do they form part of an offer or contract. If you require clarification on any points then please contact us, especially if you're traveling some distance to view. Please note that appliances and heating systems have not been tested and therefore no warranties can be given as to their good working order.